

# Level 3 Explosion-proof Interface for Distribution Box





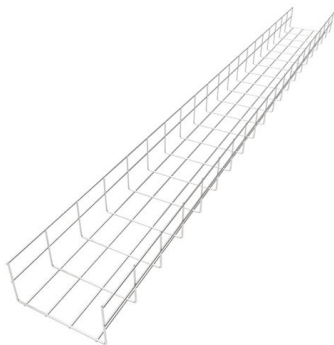
## Level 3 Explosion-proof Interface for Distribution Box

---



### Top 3 Facts About Explosion Proof Distribution Box & Electrical

Explosion proof distribution boxes and electrical enclosures are critical components for ensuring safety in hazardous environments. They are designed to contain internal explosions and



### Explosion-Proof Distribution Box BX53-III , Product Center

BX53-III Explosion-Proof Distribution Box, designed for hazardous environments, regulates power safely to avoid ignition risks.

### Ex Enclosure Systems

These explosion-proof enclosures are the spearhead in terms of safety and provide optimum protection for your installed components against the ingress of gas, dust



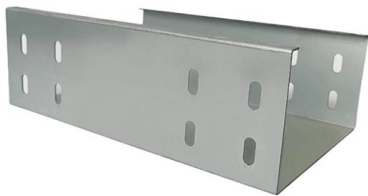
### Explosion-proof distribution box: the "invisible guard" protecting

1. Certification standards: It must comply with international explosion-proof certification (such as ATEX, IECEx) or domestic explosion-proof standards (such as GB3836). 2. Protection



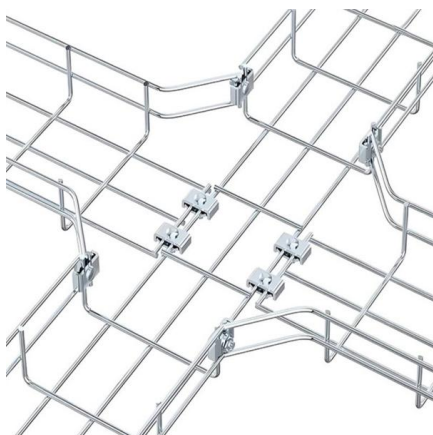
### **Explosion Proof Enclosures , Complete Hazardous Area**

Learn everything about explosion proof enclosures for hazardous areas--design, certification, and industrial applications with ATEX, IECEx, and Class I Div



### **Explosion Proof Box & Cabinet**

Product features: The explosion-proof control cabinet (box) can install various instruments inside. Low-voltage electrical appliances, frequency converters, PLCs, soft starters, and computer systems can



### **Atex Certified Junction Boxes, Terminals, Sockets**

These explosion proof junction boxes / terminal boxes, plugs, sockets & connectors are for use in explosive atmospheres in compliance with the ATEX 94/9/EC



## Explosion Proof Power Distribution Boxes

Flameproof and explosion proof, these power overhaul distribution boxes are suitable for use in hazardous areas. Specs: Ex mark: Ex de IIC T4 Gb DIP A21 TA,T4

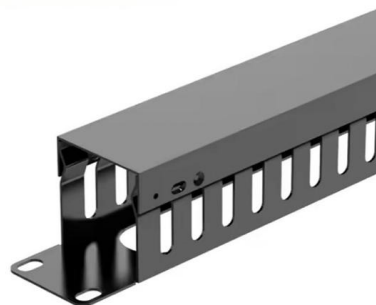


## Terminal Box/Explosion proof electrical equipment/global certification

KHJ offers a large selection of terminal boxes and junction boxes for wiring connection in explosion hazardous areas. They are certified according to the latest ATEX and IEC EX standards.

## Explosion-Proof Distribution Box BX53-I , Product Center

BX53-I Explosion-Proof Distribution Box manages and distributes power safely in hazardous areas, mitigating ignition risks.



## Energy Distribution

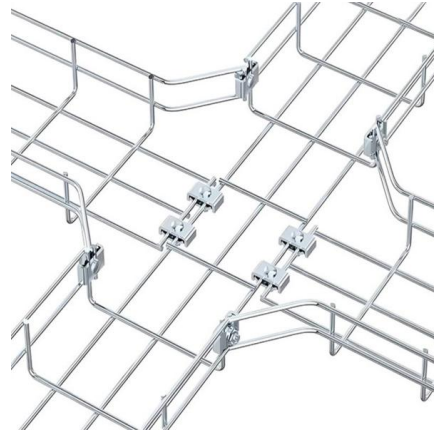
BARTEC offers one of the most extensive ranges of explosion-proof and substance-resistant components, devices, and systems for controlling, switching, and

## Explosion-Proof Junction Box for Hazardous



## Areas

Explore the features, working principles, and benefits of an Explosion-Proof Junction Box -- essential for safe electrical connections in hazardous



### **BM (D)X-Series Explosion Protected Distribution Box**

BM (D)X-Series Explosion Protected Distribution Box Explosion protection -IECEX (IEC) -ATEX (CENELEC,EN) -China Ex (GB) Application in hazardous area



### **Model and Specification of Explosion-Proof Distribution Box**

Explosion-proof lighting distribution boxes and cabinets come in a variety of models. They vary in terms of materials, including metal and flame-retardant plastic; installation methods, such as



### **Terminal and Junction Boxes (Ex d) , Explosion Protection**

Constructed from corrosion-resistant, copper-free aluminum, the GUB series terminal boxes and junction boxes are available in a variety of sizes and configurations to suit different installation needs.





## Explosion Proof Enclosures

Ex-Proof & Flameproof Junction Boxes & Enclosures Supermec ATEX Junction Box & Enclosures are designed to satisfy most of our clients' requirements for CONTROL explosion-proof and flameproof



### Top 3 Facts About Explosion Proof Distribution Box & Electrical

Learn the top 3 facts about explosion proof distribution boxes & electrical enclosures--certifications (ATEX, IECEx, NEMA), durable materials, and customization for

### Explosion-Proof Corrosion-Resistant Distribution Box BXM (D)8030

BXM(D) 8030 Explosion-Proof Corrosion-Resistant Distribution Box, designed for hazard zones, ensures safe power control and prevents ignition risks.



### Explosion-proof junction box, Explosion-proof terminal

This junction box ELAK-Ex-3 in conventional design is suitable for use in potentially explosive atmosphere in accordance with Ex-guidelines 94/9/CE (ATEX 95).



## Terminal and Junction Boxes , Explosion Protection

Terminal and Junction Boxes Terminal boxes and junction boxes from Pepperl+Fuchs are designed to protect signal and power distribution networks in explosion-hazardous and challenging environments.



### Full Guide on Explosion-Proof Distribution Panel

In conclusion, explosion-proof distribution panels are a critical safety feature in hazardous industrial environments, providing reliable protection against potential



## Explosion-Proof Distribution Boxes & Panels Manufacturer

The explosion-proof distribution box safely delivers power in hazardous zones (oil, gas, chemical plants) with rugged, spark-resistant casing--ATEX/IECEX, IP66 certified for reliable operation in explosive



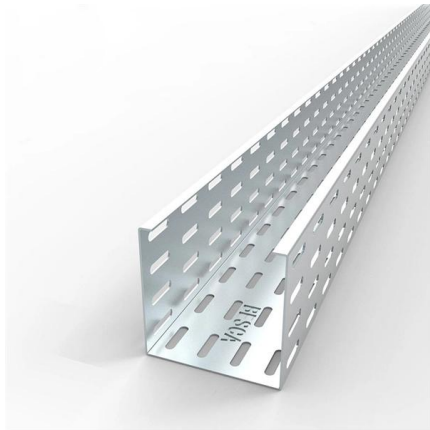
### Explosion-Proof Terminal Box: Rugged & Reliable

Heavy-duty, warom explosion-proof terminal (junction) box in robust copper-free aluminum with IP66 rating. Ideal for wiring and electrical distribution in hazardous



## Installation and Wiring of High and Low Voltage Explosion-Proof

Installation of High and Low Voltage Explosion-Proof Distribution Boxes: Before installation, the control room should be ready, with all interior work completed, and the environment

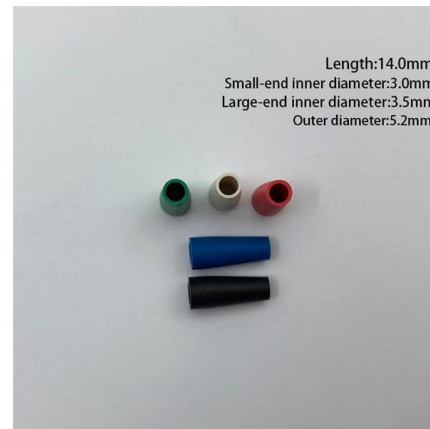


### Ex Local Control Stations & Distribution Boxes

Atex control stations, explosion protected control units and distribution boxes made stainless steel maritime grade AISI 316L or AISI 304L. Atex Delvalle provides a

### Ex junction and terminal boxes - Explosion-Proof , mlx-ex

GRP Ex terminal boxes What are Ex Terminal Boxes? Ex terminal boxes are protective enclosures used to connect and distribute electrical circuits safely within explosive atmospheres. They serve as



### Explosion-Proof Control & Distribution Boxes

The MAMX02/03 Series Explosion-Proof Control and Distribution Boxes are engineered to deliver advanced protection and long-term performance





## Terminal Box/Explosion proof electrical equipment/global certification

Terminal Box KHJ offers a large selection of terminal boxes and junction boxes for wiring connection in explosion hazardous areas. They are certified according to the latest ATEX and IEC EX standards.



## Explosion Proof Enclosure Comprehensive Guide

Explosion-Proof Distribution box: These smaller components are structurally similar to distribution cabinets. You can use these for the distribution

## Contact Us

---

For datasheets, pricing, or custom high-speed optical interconnect solutions, please visit:  
<https://www.syropy.com.pl>