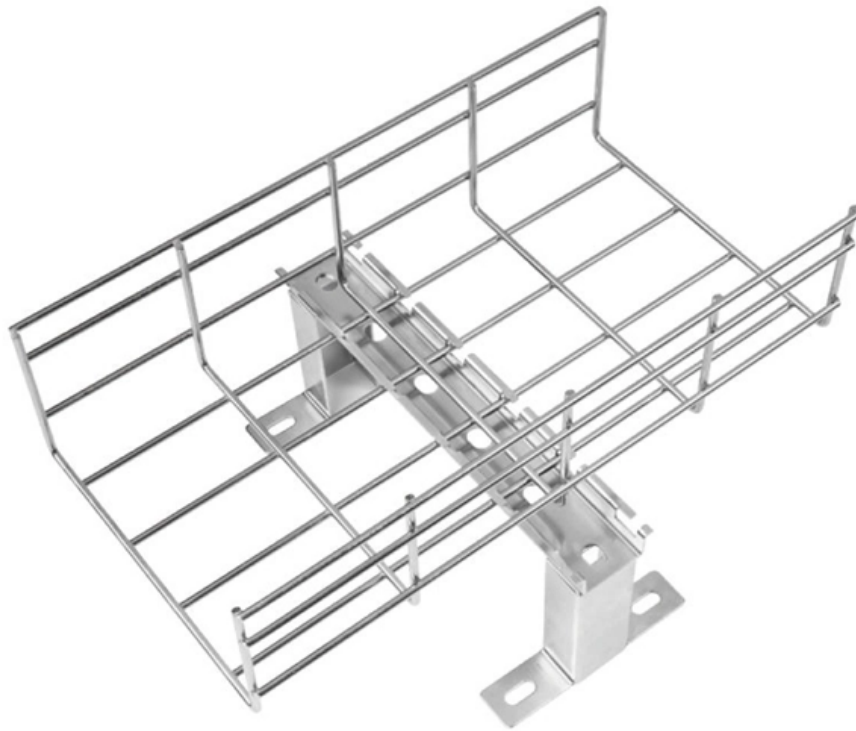


Leakage Protection for Building Distribution Boxes



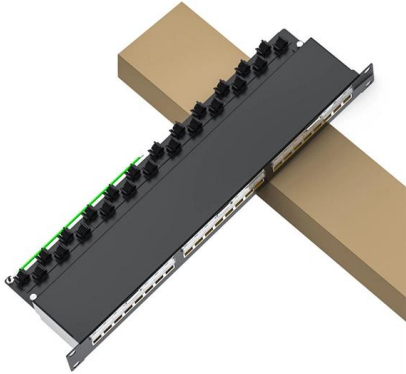


Overview

Residual current protection (RSD/RCCB/RCBO): Detects leakage current and cuts off power to reduce electric shock risk. These relays detect current leaks and respond quickly by cutting off the electrical supply to protect people from electric shocks and prevent fires that may be caused by. Overcurrent faults, electrical leakage, voltage instability, and three-phase imbalance remain persistent risks in community power infrastructure. E-abel's residential power distribution boxes are engineered as safety-first, customizable solutions that directly address these challenges. Earthing connection: Ensures proper grounding to maintain safety and system stability.



Leakage Protection for Building Distribution Boxes



The Importance of Distribution Boxes in Electrical Systems

Distribution boxes are an essential component of any electrical system, providing a safe and reliable way to distribute power to various circuits in

Five benefits of installing surge protectors in distribution boxes

Explore the five benefits of installing surge protectors in distribution boxes to safeguard your electrical equipment effectively.



Installation of leakage protection device

The location of the leakage protection device in the power line, in principle, must be installed on the power supply side of the distribution panel or in

The Importance of Distribution Boxes in Electrical Systems

The box is usually located in a utility room, garage, under the stairs, or basement. It is directly connected to the main power supply for the building.



distribution box with electrical leakage protection

Explosion-proof lighting/power distribution box (with leakage protection) Jul 10, 2012



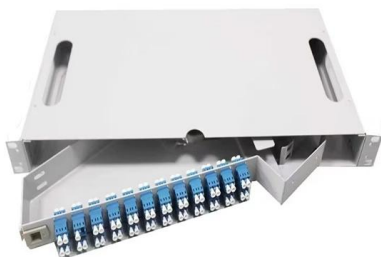
What is an Electrical Distribution Box? A

When it comes to electrical safety, every building -- whether it's a cozy home or a sprawling factory -- needs a secure system to manage and



DISTRIBUTION BOX

ABS VIOX distribution boxes utilize high-quality ABS plastic, offering exceptional durability and electrical insulation. This versatile material ensures our products





Distribution Boxes: Types and Functions

These components support residential and commercial installations by managing the incoming supply, distributing power across branch circuits, and



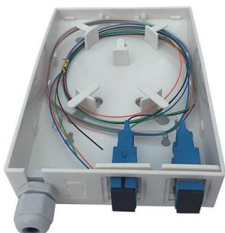
Circuit Breaker Distribution Box Electrical, Outdoor

MAKERELE IP65 waterproof distribution protection box, made of ABS plastic, and the use of plastic transparent cover is convenient to check the running status of



Modular leakage relays , installed in electrical distribution boxes

Modular residual current relays are specialized electrical devices designed to detect and protect against leakage currents that can pose a danger to people and equipment. These relays are often used in



Explosion Proof Illumination Distribution Boxes (With

Flameproof and explosion proof, these power overhaul distribution boxes are suitable for use in hazardous areas. Main switch: Maximum current is 180A. Branch



Legrand leakage relays , mounted in electrical

Leakage relays operate by monitoring the current balance between the phase and neutral wire. If the system detects that part of the current is leaking to the ground



Explore Power Distribution Box Types and Functions

While the installation location of the distribution box needs to be non-flammable, there are also requirements for the enclosure of the distribution box.

Customized Residential Power Distribution Boxes for Community

Explore how E-abel residential power distribution boxes solve overcurrent risks, electrical leakage, and phase imbalance in modern communities. Learn how customizable low-voltage



Distribution Boxes Explained: Types, Functions, and

Learn about distribution boxes, their types, functions, and safety features to ensure efficient and secure electrical power distribution in any building.

Distribution Boards



Distribution boards, often referred to as electrical panels or breaker boxes, serve as the nerve center of any electrical system. Here we explore the crucial parts of a distribution board and gain insights into



Understanding Distribution Boxes: A Comprehensive Guide

A distribution box, also known as a power distribution box or electrical distribution box, is used to distribute electrical power safely to multiple

Fato IP65 ABS Earth Leakage Protected Distribution Box

Fato IP65 ABS Earth Leakage Protected Distribution Box, Find Details and Price about Distribution Box Distribution Board from Fato IP65 ABS Earth Leakage



Stop Outdoor Electrical Box Rust & Leaks: 3 Proven Solutions

Final Takeaway: Whether you're powering a skyscraper build, backyard workshop, or chemical plant, the right outdoor electrical distribution box combines durable materials, proper



SAFEhouse discusses distribution boards, isolators and

The distribution board in any building contains vital safety equipment for the purpose of protecting people and their assets. The devices installed for



LoRa handheld portable base station



How to Install a Cable Distribution Box Safely and

In modern electrical systems, cable distribution boxes (also known as electrical distribution boxes or distribution boxes) play a crucial role as the key

Key Steps When Choosing the Right Waterproof Level

Learn how to choose the right waterproof level for distribution boxes. Follow 8 key steps and explore IP65+ solutions from trusted manufacturer



Distribution box surge protector: an important part of lightning

2. Multiple protection: The surge protector has multiple protection functions and can simultaneously protect against threats such as lightning, voltage mutations, and electromagnetic



Understanding Distribution Boxes:A Comprehensive Guide

A distribution boxes is an essential device that manages the safe and efficient flow of electrical power throughout different areas of a building or facility.



Contact Us

For datasheets, pricing, or custom high-speed optical interconnect solutions, please visit:
<https://www.syropy.com.pl>