

Layout of the Fiji power distribution box





Layout of the Fiji power distribution box



fiji YBF Series Wind Power Box-type Substation

It is a new type of prefabricated substation developed for the special usage requirements of wind power generation, featuring strong integration, easy installation, short construction period, low operating

Fiji Power Plants

List of power plants in Fiji from OpenStreetMap



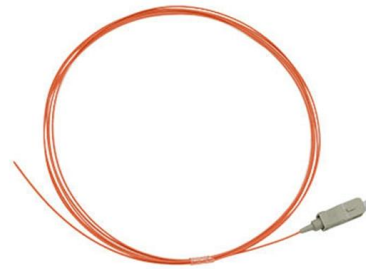
Power Stations -- Universal Electronics

Universal Electronics Bluetti AC70P Portable Power Station is your ultimate solution for on-the-go power needs. Whether you're camping, working in remote locations, or e



DOMINION WIRE AND CABLES LIMITED, Fiji, Electrical Equipment

DOMINION WIRE & CABLES LIMITED has a distribution network throughout Pacific Islands and a team of people committed to meeting the total needs of our customers - from customer specification

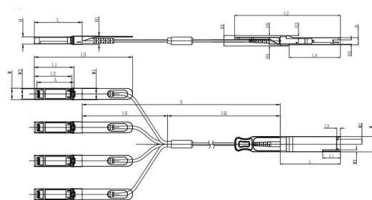


Fiji Power and Electricity Guide: Plugs, Adapters, Voltage, and

Everything you need to know about Fiji's electrical system before you travel -- plug types, voltage, what adapters to buy, and how to keep your devices charged on outer islands where power

About Fiji

General Electrical Contracting Air Con Unit Capacitors Crimping Tools Chandeliers Lights Electric Switchboards Mounting Enclosure Distribution Boards Circuit Breakers and Disconnects Weather



Unit mm

OSFP28	L	L1	L2	L3	L4	W	W1	W2	H	H1	H2	H3	H4	H5	H6
Max	72.2	-	128	4.35	61.4	18.45	-	6.2	8.6	12.4	5.35	2.5	1.6	2.0	-
Type	72.0	-	4.20	61.2	18.35	-	8.5	12.2	5.2	2.3	1.5	1.8	6.55	-	-
Min	68.8	16.5	124	4.05	61.0	18.25	2.2	5.8	8.4	12.0	5.05	2.1	1.3	1.6	-

SFP28	L	L1	L2	L3	W	W1	W2	H	H1	A
Max	57.6	47.7	44.55	119.9	13.8	14.0	12.3	8.7	10.3	45.35
Type	57.4	47.5	44.35	117.9	13.55	13.8	12.1	8.5	10.1	45
Min	57.2	47.3	44.15	115.9	13.3	13.6	11.9	8.4	9.9	44.65

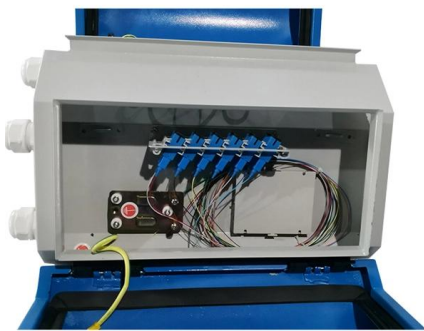
Ten Year Power Development Plan - EFL

EXECUTIVE SUMMARY As stipulated in Fiji Grid code 2011, Energy Fiji Limited (henceforth referred as EFL) has to ensure that demand will be met at all times under all circumstances. In this context, EFL



Power Distribution Equipment Manufacturers Fiji, Power Distribution

You can contact us by email at sales@machinesequipments for reliable Power Distribution Equipment supplier, we are well-known for our world-class Power Distribution Equipment and one



ROOFING & PROFILES (FIJI) PTE LTD.

Switch Boards & Meter Boxes Switch Boards & Meter Boxes We manufacture and assemble purpose built switchboards for both commercial and industrial applications.. Again we continue to meet the

Explore Power Distribution Box Types and Functions

Power distribution boxes are used in commercial and residential buildings and are part of the electrical system, also known as switchboards.

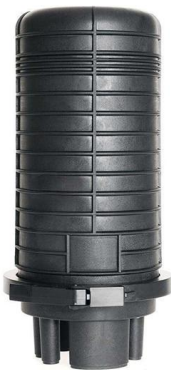


Datec Fiji

Cost effective solutions to distribute power effectively into a rack enclosure or to connect more devices to a rack-mount UPS. Provides complete IT and E-Business Solutions to businesses in Fiji and the



(a) at least one point of the system must be connected with earth; (b) in a 3-wire direct current system, the intermediate conductor must be earthed; (c) in a low voltage or medium voltage 3-phase 4-wire

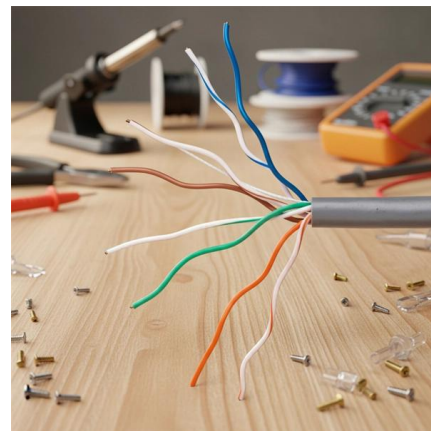


The Fijian Made Campaign

Electrical Distribution Box By: Roofing & Profiles (Fiji) Pte Limited
Electrical Distribution Box
Roofing & Profiles (Fiji) Pte Limited

Lautoka Switchboard & Electrical

Over the years we have become one of the leading switchboard manufacturers in Fiji. Our local switchboards are designed and fabricated in-house in Fiji and follow AS/NZS 3000:2018 wiring



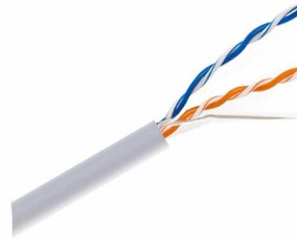
Fiji Electrical Outlets & Power Plugs ?

Find out everything you need to know about the electricity in Fiji for travellers. Find out what power plugs are used, voltage and frequency.



Power Distribution Boxes Explained Simply

Learn what a power distribution box is, how it works, key components, types, and why it's vital for safe and efficient electrical systems.

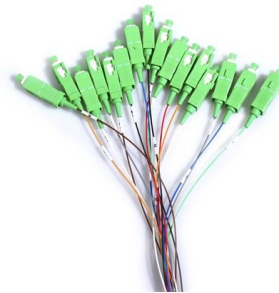


Explore Power Distribution Box Types and Functions

Due to different usage scenarios and requirements, as well as considering the location of the actual wiring, the distribution box has a variety of

Understanding Distribution Boxes: Your Guide to Power

Weatherproof Distribution Boxes These serve specific outdoor purposes, with rain, dust, and extreme temperatures sealed shut, protecting any



Understanding Distribution Boxes: A Comprehensive Guide

A distribution box, also known as a power distribution box or electrical distribution box, is used to distribute electrical power safely to multiple



ENERGY FIJI LIMITED TECHNICAL SPECIFICATION FOR LOW/

This document outlines the technical requirements for low voltage distribution boards for use in EFL's low/medium voltage (240 - 415V AC) distribution network.



Power Distribution System Planning in Fiji

Distribution system planning aims to satisfy growing electricity demand in an optimum way that is technically adequate and reasonably economical by



Home

Fiji Electricity Authority fea energising our nation Application for Permanent Permit and Power Supply Please complete clearly in black or blue biro, see reverse for Instructions (Complete this section if



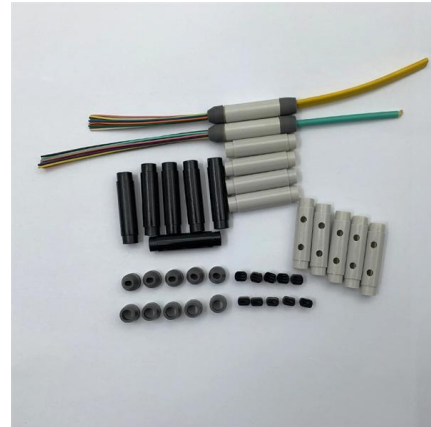
Power Distribution Boxes Explained Simply

Discover the essentials of a Power Distribution Box--how it works, key types, benefits, and tips to ensure safe, efficient electrical power management.



Power Distribution Panel In Fiji

We use cut-edge tools and modern machinery to manufacture premium quality Electrical Panels, LT Distribution Panels, Cable Bus Ducts, Power Generators, and Electrical Transformers in Fiji.

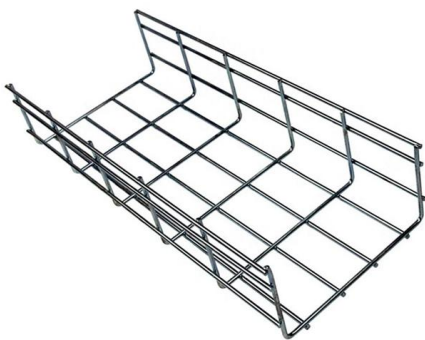


Fiji Power Strips , Fiji PDU Power Distribution Units, Multiple Outlet

Fiji power strips and PDU power distribution units for surface mount, rack mount and general purpose applications. Multiple outlet power strips are manufactured in accordance to Fiji standards with

Fiji

Fiji has 18 power plants totalling 202 MW and 474 km of power lines mapped on OpenStreetMap.



GRID-CONNECTED PV SYSTEMS

IEEE 1547 Standards for Interconnecting Distributed Resources with Electric Power Systems. UL Standard 1741 Standard for Inverter, converters, Controllers and Interconnection System Equipment



Power Distribution Panel In Fiji

The Power Distribution Panel, manufactured by Brilltech, are known to exhibit attributes such as compact design, fully tested and excellent quality complying to ISO standards.



Fiji

Procedure Apply In-Person: To electricity or power connection must be obtained from the Energy Fiji Limited. Location The application form for new electricity or power connection must be

Contact Us

For datasheets, pricing, or custom high-speed optical interconnect solutions, please visit:
<https://www.syropy.com.pl>