

# **Layer 3 Switch Optical Mode**





## Layer 3 Switch Optical Mode

---



### Layer 2 vs Layer 3 switches -- Understanding the

Layer 2 vs. layer 3 switch: Understanding the differences that impact IT Switch ports are essential components of network communication processes in modern IT

### Fiber-optic Prism Optical Switches

The 2x2 single-mode switches are fully reversing optical bypass switches, which are used to insert or bypass nodes in fiber ring networks. These non-blocking, non

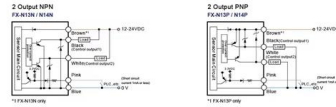


### Fiber Optical Layer 3 Switches For Cloud Data Center

Airlive fiber optical layer 3 switches for cloud Data Center Application Airlive L3-XGF28 is a new-generation switch released by AirLive Networks for cloud data

### Layer 2 vs Layer 3 Switch: Key Differences and Use Cases

Layer 2 vs Layer 3 switch explained. Learn MAC vs IP forwarding, inter-VLAN routing, performance differences, and when to choose each switch type.

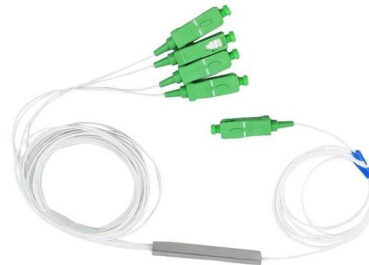


### Explore the Power of Enhanced Routing in Layer 3

Layer 3 switching represents a pivotal advancement in the realm of network engineering, striking a balance between the efficiency of switches and

### Layer 3 Switches

When combined with fiber optic technology, these switches provide higher speed, greater bandwidth, and long-distance data transmission without the limitations of traditional copper-based Ethernet. It



### FortiLink mode over a layer-3 network

This feature allows FortiSwitch islands to operate in FortiLink mode over a layer-3 network, even though they are not directly connected to the switch-controller FortiGate unit.



## Layer 2 vs Layer 3 Switch: What's the Difference? , Auvik

A network switch is a fundamental piece of any network, so it's critical that you as an IT professional understand the role of a switch in a properly



## Routers and L3 Switches , NetworkAcademy.IO

Learn how routers and Layer 3 switches connect networks, route IP packets, and enable fast inter-VLAN communication in modern network designs.

## Wiley Online Library , Scientific research articles, journals, books

Hier sollte eine Beschreibung angezeigt werden, diese Seite lässt dies jedoch nicht zu.



## 24-port Gigabit 4\*10G SFP+ optical ports Layer 3 managed switch link

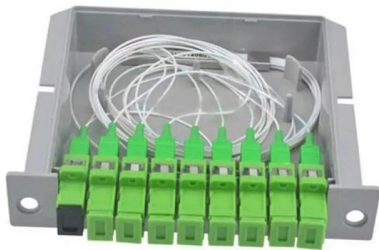
Based on Advanced security features and advanced quality of service (QoS), it can be used as a core distribution or access layer switch with high port density, and easy to manage.





## Understanding Layer 3 Switches: Routing and Ethernet

Discover the role of layer 3 switches in routing and Ethernet networks. Learn how they differ from layer 2 switches and find out if they fit your

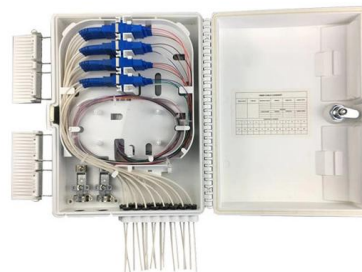


## Understanding the Differences Between Layer 2 and

Feature Articles Understanding the Differences Between Layer 2 and Layer 3 Switches For decades there were switches, and then there were routers. It was

## Layer 2 vs Layer 3 Switches: A Comprehensive Technical Guide

Understanding the differences between layer 2 and layer 3 switches is critical for anyone designing or managing business networks. These two types of switches operate at different OSI model layers and



## Fiber Optic Convection Cooled Ethernet Switch

Featuring multi-mode fiber optic ports, each supporting up to 25G Ethernet, this switch undergoes rigorous testing at Amphenol's state-of-the-art communications



## Configuring Common Optical/Electrical Interface Attributes

In Layer 2 mode, an interface can be used as a Layer 2 Ethernet interface; in Layer 3 mode, the interface can be used as a Layer 3 Ethernet interface. By default, an Ethernet interface on



### 24-Port Layer 3 Stackable 10 Gigabit Fiber Managed Switch

The DXS-3400 Series switches feature a modular fan and power supply design for a high availability architecture. The hot-swappable design means that fans and power supplies can be replaced without



### RG-S5310-48SFP4XS-E, 48-Port GE Optical Layer 3 Managed Access Switch

RG-S5310-48SFP4XS-E, 48-Port GE Optical Layer 3 Managed Access Switch Full Gigabit Ethernet Access Switch for Large-sized Networks



### Layer 2 vs. Layer 3 Switch: Which Is Right for Your

Learn the key differences between Layer 2 and Layer 3 network switches and how to choose the right one for your network. Make an informed



## How to Understand Layer 3 Switch? What Are Its Main Functions and

Layer 3 Switch, also known as a three-layer switch, is a network device that combines the functions of traditional routers and layer 2 switches, playing a key role in modern network architecture.

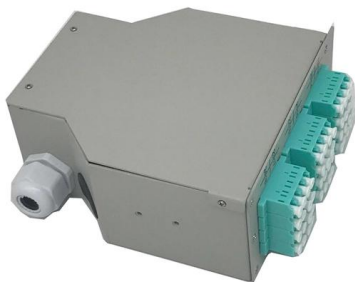


### SODOLA 24 Ports 10G L3 Switch 24\*10GE SFP

These solutions offer high reliability, high performance, and easy management, supporting Cut-Through forwarding mode with fixed transmission latency.

### RG-S5310-48SFP4XS-E, 48-Port GE Optical Layer 3 Managed

Multiple physical switches can be virtualized into one logical unit to simplify network configuration and architecture, eliminating loops, and improving reliability.



### Optical Switches: Singlemode/Multimode Fiber Optic

Lfiber's optical switches (singlemode/multimode fiber switches) are micro-optic-based, opto-mechanical switches. These fiber switches offer a cost-effective way



## Understanding Layer 3 Switches: Key Differences and

Explore the key differences between layer 2 and layer 3 switches, and discover their ideal use cases to optimize your networking strategy. Learn more



## L1 vs L2 vs L3 Switches: Key Differences Explained

Confused between L1, L2, and L3 switches? Learn the key differences, features, and use cases to pick the right one for your network needs.

## Layer 3 Switches: Our Guide to Optimizing Your Network

Discover the benefits of layer 3 switches and optimize your network. Learn the differences between layer 2 and layer 3 ports.



## Contact Us

For datasheets, pricing, or custom high-speed optical interconnect solutions, please visit:  
<https://www.syropy.com.pl>