

Laser Diode Temperature Tolerance





Laser Diode Temperature Tolerance



1550 nm laser diode 10 models up to 500mW -SHIPS

The DFB 1550 nm laser diodes can reach high power in nanosecond pulse regime up to 500mW. Most Turn-key diode + driver solutions are optimized from single

???? 1

Laser diode is sensitive device to ESD and surge, so even an extremely short time, laser diode damaged with the strong light emitted. Use the power supply that was designed not to exceed the



Types of Diodes Explained: Applications and Selection Guide

Learn diode types, symbols, packages, and applications, including Schottky, Zener, TVS, LED, and fast recovery diodes for your electronics and PCB design.



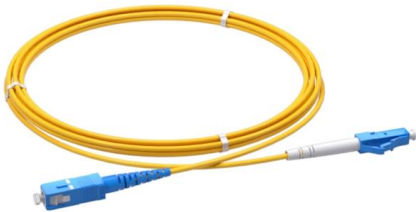
Laser Diode Temperature Tuning Calculator , Wavelength vs Temp

Calculate the required laser diode temperature setpoint to tune your laser diode's wavelength. Interactive tool for estimating spectral shift



The Impact of Temperature on the Performance of Semiconductor Laser Diode

operating temperature will seriously affect the characteristics of the LD. When the laser diode operating position is changed from inc herent to lase, increased temperature provides a decrease in



Laser Diode Characteristics, Precautions for Use and Drive Circuit

As is the case for all semiconductor devices, a laser diode generates heat at junctions during the prolonged application of a current, such that the diode temperature increases.



The Impact of Temperature on the Performance of

Abstract and Figures The features of a semiconductor laser diode (LD) are extremely dependent on the temperature of its chip.



Determination of the Temperature and Thermal Resistance of a

A technique is proposed for determining the temperature of a laser diode operating in a continuous mode, as well as thermal resistance of the device by comparing its current-voltage



Controlling Temperatures of Diode Lasers

Emission wavelength, threshold current and operating lifetime all are strong functions of device temperature. For a typical diode laser emitting 3 mW at 780 nm, the

Determination of Temperature and Thermal Resistance

An improved method for determining the temperature of a laser diode and the thermal resistance of the main elements of an equivalent thermal circuit based on



Laser Diodes

A laser diode generates some heat at the junction points with a long time of electric current like general semiconductors. As a result, the temperature of the element increases. Without an enough heat



Microsoft Word

Introduction A typical application in laser diode test is the characterization of laser output over wide temperature ranges, typically from 0°C to 85°C. Quick changes to and rapid stabilization of laser



Controlling Temperatures of Diode Lasers

The operating characteristics of diode lasers also vary considerably with temperature. Emission wavelength, threshold current and operating lifetime all

Laser Diode Drivers

Laser diode drivers supply electronic current to laser diodes, with different requirements based on application and power level.

Powerful manufacturers - 20+ years of experience - Support customization
 For more product types, please contact customer service>>>

Send inquiry Chat now



Effect of stress on the temperature coefficient of solder-free mounted

Variation of lasing wavelength with temperature is a key factor to determine packaging thermal resistance in laser diodes. Using proprietary mounting technology that clamps laser bars instead of



Laser Diode Basics , Springer Nature Link

However, laser diode beams have large divergences, elliptical shapes and astigmatisms, and therefore are difficult to manipulate compared with almost any other types of laser beams. Laser



Why Laser Diodes Shift Wavelength with Temperature

Control your laser diode wavelength with temperature tuning. Learn the physics, use our free calculator, and hit your exact target nm every time.

Laser Diodes: Laser diode operation 101: A user's guide

A laser diode system consists of the laser itself, a laser diode driver, a laser mount, and, for most applications, a temperature controller. Each of these



Laser Diode Characteristics, Precautions for Use and Drive Circuit

Laser diodes are very sensitive devices and several precautions must be taken when using these diodes. Among these precautions, the most important include remaining below the absolute



Laser Diode Temperature Tuning Calculator , Wavelength vs Temp

How Laser Diode Temperature Tuning Calculator Works? In precision photonics, "roughly 808 nm" is rarely good enough. Whether you are pumping a solid-state crystal, performing Raman



Laser diode optical output dependence on junction temperature for

Laser diode optical output is studied and modeled. Four major diode parameters (threshold current, slope efficiency, central wavelength of output, and full-width half maximum of

NTC thermistors for laser diode temperature measurement

These bondable NTC thermistors can be mounted with Au wire bonding inside the package for highly accurate temperature detection of laser



Laser Diode Control Fundamentals

To assess the quality, performance, and characteristics of laser diodes, manufacturers often perform exhaustive testing which requires electro-optical,



Optima Laser Diode Application Notes and Glossary

Optima Laser Diode Application Notes and Glossary Terms Describing Laser Diode Absolute Maximum Ratings: Commonly used abbreviations are shown in parentheses. Case Temperature (Tc) Device

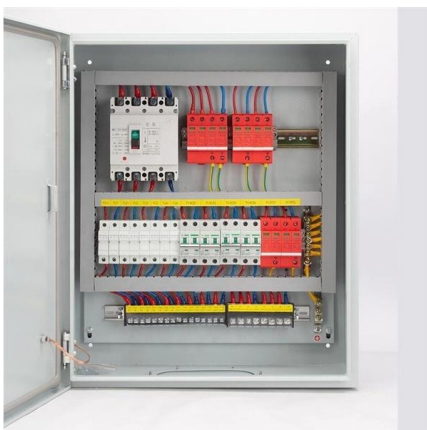


AN-LD18 Optimizing Laser Diode Control

Although laser diode drivers are important to operating a laser diode, temperature control is also vital to correctly and safely using a laser diode. The output of a laser diode, like other electronics, is affected

TEC thermal management for LiDAR laser diode stability

Semiconductor laser diodes emit at a wavelength that is directly coupled to junction temperature: as temperature rises, threshold current increases, optical output power deteriorates,



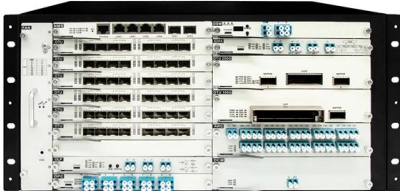
The Impact of Temperature on the Performance of Semiconductor

the performance of uncooled semiconductor LD was experimentally studied. These results investigated the effect of temperature on several essential parameters in order to define the quality of



Chapter 1 Laser Diode Basics

Abstract The optical characteristics of laser diodes are summarized. The electrical, mechanical and temperature characteristics of laser diodes are briefly summarized. Vendors and distributors for laser



Parameter Overview of Laser Diodes by Dr. Kamran S.

In most applications the ability of the laser diode to perform well at elevated temperatures is of great interest. This is specially of concern in the case of high

Contact Us

For datasheets, pricing, or custom high-speed optical interconnect solutions, please visit:
<https://www.syropy.com.pl>