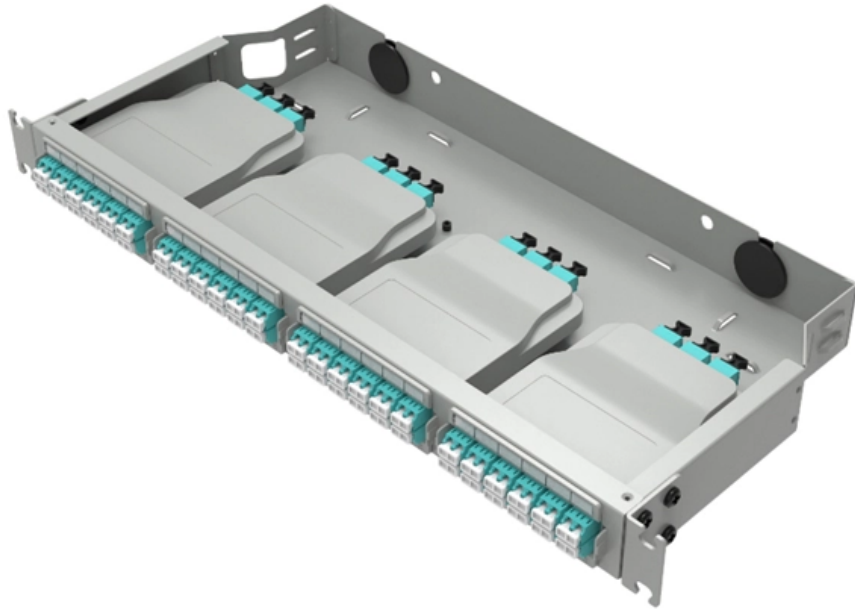


# **Laser Diode Pin Wiring Method**





## Laser Diode Pin Wiring Method

---

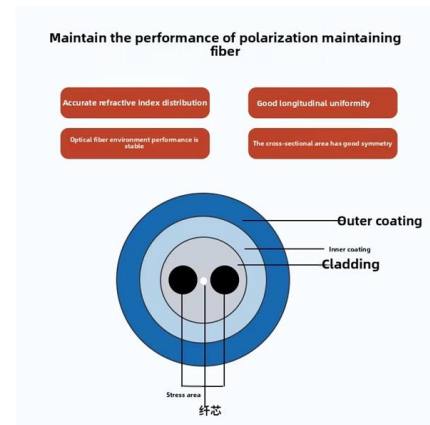


### Arduino Laser Pinout

The laser pinout determines the connection method between the Arduino board and the laser module. By understanding the laser pinout, you can effectively control

### Laser Diode Tutorial

Laser Diode Tutorial The purpose of this laser diode tutorial is to provide the information necessary to create a long lifetime, stable laser diode system. Much of what will be discussed will be in general



### How to Use Laser Diode Module: Examples, Pinouts,

Learn how to use the Laser Diode Module with detailed documentation, including pinouts, usage guides, and example projects. Perfect for students, hobbyists, and

### Building a laser driver circuit?

I have a small laser diode I ripped out of a CD/DVD read write drive. It has 3 pins on it and my first question is what function does the third pin have? Is it a second



### Laser Diode Module Tutorial : 4 Steps

Laser Diode Module Tutorial: Description: This 100mW laser module emits a small intense focused beam of visible red light. The module can be used with an



### Interfacing laser diode module with Arduino

In this code snippet, we begin by configuring Arduino pin 13 as an output to control the laser module. Subsequently, we alternate between turning



### Laser wiring diagram, pinouts , PWM, TTL signal

Wiring the Endurance lasers. All you need to know about wiring diode lasers to 3D printer / CNC and engraving machines. Correct pinouts.





## Interfacing laser diode module with Arduino

Wiring schema Laser modules often come with a built-in driver circuit, simplifying the integration process. They typically have three input pins: VCC

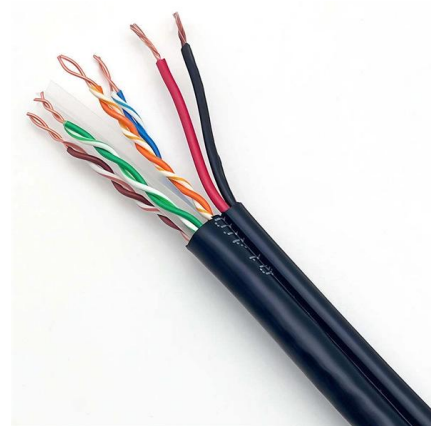


## Make a Simple Laser Diode Module

Make a Simple Laser Diode Module: Laser diodes are quite useful in some ways especially in trigger/alarm systems such as triplight mechanisms or even in DIY

## Interfacing laser diode module with Arduino

Learn how to connect and control a laser diode module using Arduino in a few simple steps. Find this and other hardware projects on Hackster.io.



## How to Build a Laser Diode Circuit

In this article, we will show how to connect and build a simple laser diode circuit to get light output from a laser diode.



## good method/tool for wiring diode pins? , Laser Pointer Forums

hello, i just figured out that it can be pretty tricky to attach a cable to the diode pins. How do you guys do that, with a regular soldering iron? I tried to look for some kind of wire



## Laser Diode Pin-Out Styles - BeamQ Laser

Home 808nm IR 1000W Microchannel Stack  
Laser 860nm Laser Diode Multi-mode  
WSLD-860-003-C WSLD-860-003-E Sample Page

## Laser Diode Pinout

The laser diode pinout is the guide for us to how to connect the diodes. It may be different according to the laser diode module number. You can see it the following



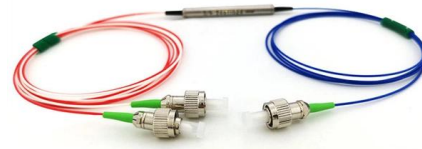
## Wiring and Mounting a 650nm Laser Diode

Wiring and Mounting a 650nm Laser Diode For use with laser modulator and shotgun. While using a cheap laser pointer with the laser modulator and shotgun



**Thorlabs, Inc.**

Hier sollte eine Beschreibung angezeigt werden, diese Seite lässt dies jedoch nicht zu.



### **Laser Diode Driver Circuit - A Beginners Guide - Flex PCB**

Proper thermal management is crucial for stable operation. Basic Laser Diode Driver Circuit A basic laser diode driver circuit consists of the

### **Laser Diode Drive Circuit Design Method and Spice Model**

Laser Diode Drive Circuit Design Method and Spice Model ROHM offers laser diodes (LDs) for Light Detection and Ranging (LiDAR). This application note will introduce ROHM's LD line-up and show

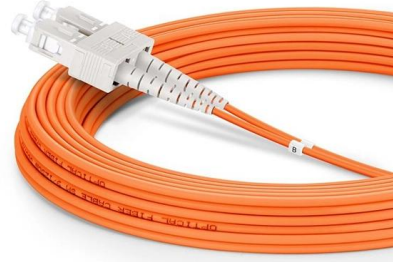


### **Interfacing laser diode module with Arduino**

Learn how to connect and control a laser diode module using Arduino in a few simple steps.



I got a 4 pinned laser diode. Its schematic is below. My questions are very basic, but since it's the first time I will operate a diode like this, could



### Hands-On Tutorial for Laser Diode Integration with Arduino

Step-by-step guide to wiring, coding, and safely integrating a laser diode with Arduino. Includes safety tips, troubleshooting, and beginner-friendly advice.

### How to Build a Laser Diode Circuit

They are used in laser printers, laser fax machines, laser pointers, measurement equipment, bar-code and UPC scanners, and in high-performance imagers, as



### How to Use Laser Diode: Examples, Pinouts, and Specs

Learn how to use the Laser Diode with detailed documentation, including pinouts, usage guides, and example projects. Perfect for students, hobbyists, and



## How To Wire Laser Diode Module For CNC?

To wire a laser diode module for CNC, you need to understand the pinout of the laser diode and the driver circuit. The pinout is the arrangement of



## how to solder wire to diode pins? , Laser Pointer Forums

Seems like diodes are very sensitive to heat and can die if not properly cooled, so I'm still wondering why we don't have female plugs on which to solder or crimp cables instead which can be

## Laser Diode Module Tutorial : 4 Steps

In this tutorial, we will show you how the Laser Diode Module works with Arduino together. The materials needed are listed as below: Diagram above shows the



## AN-LD18 Optimizing Laser Diode Control

Optimized diode control will reduce wavelength instability, noise produced and added to the system, and keep the user safe to operate the equipment. This application note will provide a practical step-by



## Contact Us

---

For datasheets, pricing, or custom high-speed optical interconnect solutions, please visit:

<https://www.syropy.com.pl>