

Large Span Cable Tray Styles



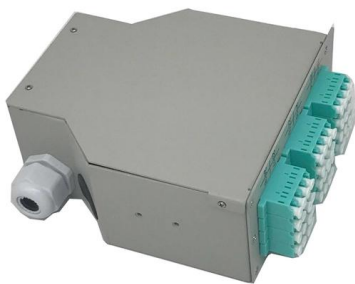


Large Span Cable Tray Styles



Cope Ladder Master Spec

Cable Tray Supports - Shall be placed so that the support spans do not exceed maximum span indicated on drawings. Supports shall be constructed from 12 gauge steel formed shape channel



Joint large span set

Joint large span set CT-JLS-SET Connect with BN06-10 Coated finishing available on demand. RAL colour code to be confirmed on your order.

Large Span Cable Tray , Heavy Duty Cable Tray Manufacturer

Large span cable trays are designed to support heavy cable loads across long distances without intermediate supports. Made from high-strength galvanized steel or stainless steel, these trays



B-Line series Cable Tray Design Considerations

Available in 3, 4, and 6-inch widths with ventilated or solid bottoms, channel cable tray is ideal for smaller instrumentation cables and cable tray runs involving a small number of cables.



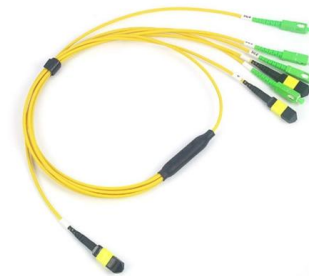
B-Line series Cable Tray Design Considerations

As an industry leader in cable tray, Eaton offers one of the widest ranges of cable management solutions available in the market today with its B-Line series portfolio. With unmatched quality and service, we



Cable Tray Technical Guide A practical guide to product selection and

Cable tray length is selected based on the load to be supported, the distance between the supports (also referred to as the span), and handling and installation constraints.



Long Span Steel Straight Sections , Ladder Trays , Cable Tray and

This product line is designed for applications with extremely heavy loads and long spans. Tray systems are available in lengths of 30, 40 and 50 feet to accommodate 30-50 foot support spans.





Cable Tray Technical Guide A practical guide to product selection and

Cable Tray Technical Guide A practical guide to product selection and installation This guide for engineers and installers has been developed by ABB as a practical reference regarding cable tray



26 05 36 Cable Trays for Electrical Systems

SCOPE This section includes: Metal cable trays
Nonmetallic cable trays
Cable tray accessories
Related Requirements: Section 260010
"Supplemental Requirements for Electrical" for additional

GUIDE CABLE TRAYS TECHNICAL

In accordance with its continuous improvement policy, Legrand reserves the right to change the specifications and illustrations without notice. All illustrations, descriptions and technical information



Cable Tray Types and Sizes

Types of Cable Trays and Sizes Explore various cable tray types and sizes for electrical installations. Learn about ladder, perforated, solid-bottom, wire mesh,



Cable routing under the toughest conditions

Our cable trays and cable ladders from the wide span system ensure that cables can be routed easily over long distances. The product range comprises cable trays and cable ladders with widths of



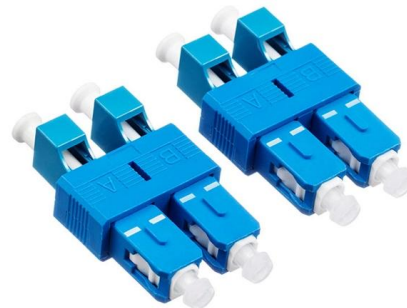
Cable trays, wide span , OBO

Cable trays - Cable trays, wide span.



Types of Cable Trays: Benefits and Uses

Different types of cable trays offer key benefits, optimizing cable management and enhancing efficiency in electrical systems.



Steel Large Span Cable Trays

Discover high-quality steel large span cable tray designed for efficient cable management, offering durability and easy installation. Ideal for enhancing organizational systems in commercial settings.



Large Span Cable Trays Lay Heavy Cables in Industries

Large span cable tray is assembled by pultruded FRP profiles. Large span cable trays can be divided into ladder style, channel style, perforated style with



CABLE TRAY INSTITUTE

Fabricated in numerous styles (wiremesh, ladder, ventilated trough, channel, and solid-bottom) and sizes, cable tray provides the greatest versatility among cable



Cable Tray Types and Sizes

Explore various cable tray types and sizes for electrical installations. Learn about ladder, perforated, solid-bottom, wire mesh, and channel trays in this complete



CABLE TRAY SYSTEMS GUIDE

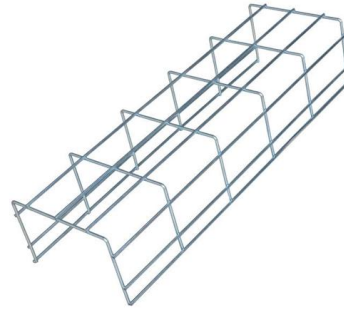
SPAN/LOAD CLASS DESIGNATIONS Commonly called the Load Class, this defines the load-carrying capability of the tray for a specific support span distance. The design and cost of the cable tray is





7 Types of Cable Trays: How to Choose the Right One

Selecting the correct cable tray type is not arbitrary--it depends on a combination of cable characteristics, environmental conditions, and installation



Wide-span Systems , PohlCon - Partner from start to future.

Wide-span cable trays are an integrated, highly flexible cable support system when used in combination with the matching formed parts, covers and system-specific accessories. The large selection of

Large Span Cable Tray for Long-Distance Transmission Cables, Easy

Our Large span Cable Trays are used extensively in Building, Water Power Industrial Sector, Mall, Railway Station, Metro Station, Airport etc. For cable installation for power distribution and



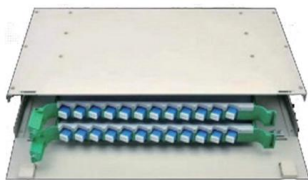
Cable trays, wide span , OBO

Colour 6 products (30 Variants) 30 60 90 5 Variants Wide span cable tray WKSG 110 FS To product 5 Variants Wide span cable tray WKSG 110 FT To product



Cable Tray Size and Dimensions: How to Choose the

Learn how to calculate the perfect cable tray size and dimensions for your electrical project. This guide covers load capacity, fill ratios, and industry



GUIDE CABLE TRAYS TECHNICAL

NEMA VE 1-2017 Specifies requirements for metal cable trays and associated fittings designed for use in accordance with the rules of Canadian Electrical Code, Part I and the National Electrical Code®

7 Types of Cable Trays: How to Choose the Right One

Cable tray systems are engineered support structures designed to route, support, and protect insulated electrical cables used for power distribution,



190X95X25mm



Ladder Cable Tray with Rails and Large Space Rungs

Ladder Cable Tray - Air Ventilation for Exterior Use As the name called, ladder cable tray is a sort of cable tray that is constructed by jointing two longitude channels



**PRODUCT BROCHURE T& B® Cable Tray
Specialty aluminum solutions**

For cable tray applications lacking sufficient space for the number of supports required for standard-length sections, choose T& B Cable Tray long-span AH1-8 series aluminum cable tray in 40-foot (12.2



Contact Us

For datasheets, pricing, or custom high-speed optical interconnect solutions, please visit:
<https://www.syropy.com.pl>