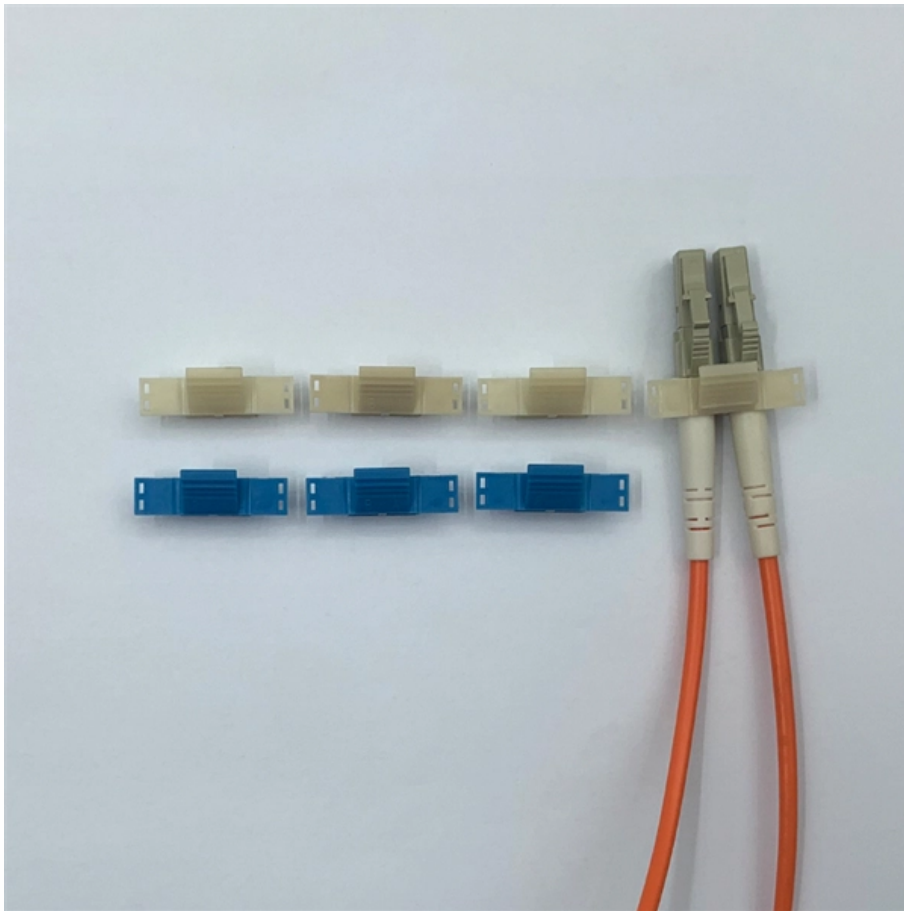


LC1D40M Interface





LC1D40M Interface



SCHNEIDER ELECTRIC LC1D40M CONTACTOR 120V NSNP

Schneider - LC1D40M - IEC CONTACTOR - 120V Coil - 3NO - NEW \$190.00 + \$12.58 delivery

LC1D40AM7

Schneider Electric India. LC1D40AM7 - TeSys D contactor - 3P(3 NO) - AC-3 - ≤ 440 V 40 A - 220 V AC 50/60 Hz coil.

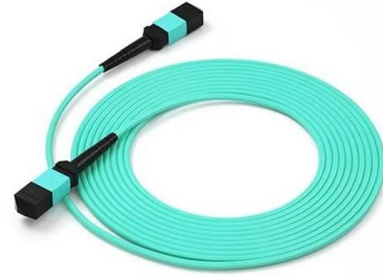


LC1D40M Schneider TELEMECANIQUE Contactor With Coil 220vac

Find many great new & used options and get the best deals for LC1D40M Schneider TELEMECANIQUE Contactor With Coil 220vac at the best online prices at eBay! Free shipping for many products!

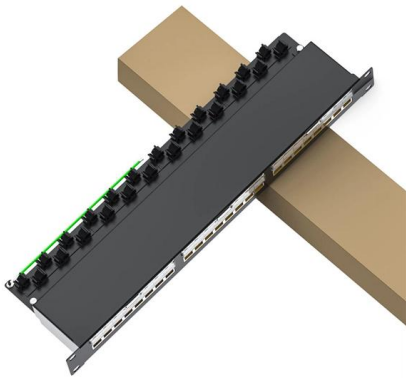
Schneider Electric LC1D40M7 Contactor LC1D, Motor

Tamper-resistant window for FLA settings Test trip button Easily Installed Accessories: -- Auxiliary contact blocks with serrated wiping action -- Front



LC1D40 - Schneider Electric - Control Parts

SCHNEIDER - LC1D40 MOTOR STARTERS - CONTACTORS The Schneider LC1D40 is a 3-phase IEC rated contactor used for the control of electric motors. It is rated 10 HP at 230V and 30 HP at



Schneider

SCHNEIDER IEC Magnetic Contactor, LC1D80G7 3 Poles, 3NO Contacts, 80 A, 120V AC



Product datasheet LC1D40M7

0 0.05 in² (1 35 mm²) - cable stiffness: flexible - without cable end Control circuit: screw clamp terminal 1 cable





LC1D40 Datasheet, PDF

LC1D40 Datasheet. Part #: LC1D400086F7.
Datasheet: 159Kb/3P. Manufacturer: Schneider Electric. Description: TeSys D contactor - 4P(2 NO + 2 NC) - AC-1 <= 440 V 60 A 110 V AC 50/60 Hz coil. 85



Product data sheet LC1D40M7

The information provided in this documentation contains general descriptions and/or technical characteristics of the performance of the products contained herein. This documentation is not

Schneider Electric LC1D40M7 IEC Contactor

Schneider Electric LC1D40M7 Description
Schneider Electric, LC1D40M7, Contactor, Series: TeSys D LC1D, 220 V AC Coil, 40/60 A Maximum Load Current, 13/15 VA Coil, 3 Pole, 50/60 Hz Frequency, 1



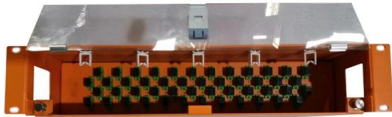
CONTACTOR 600VAC 40AMP IEC +OPTIONS

The calculation of the recyclability potential relies on the scenario "France - parts are shredded" of TR62635 considering all parts in the product and materials recyclability. We recognized that this may



LC1D40M7.pdf

This documentation is not intended as a substitute for and is not to be used for determining suitability or reliability of these products for specific user applications. It is the duty of any such user or integrator



LC1D40 Datasheet, PDF

Description: TeSys D contactor - 4P (2 NO + 2 NC) - AC-1 \leq 440 V 60 A 110 V AC 50/60 Hz coil. 85 Results. Part #: LC1D40008B7. Datasheet: 159Kb/3P. Manufacturer: Schneider Electric.

LC1D40M Schneider , Buy Schneider Parts

Schneider LC1D40M Get a price at EU Automation. Quality Schneider automation parts. Fast Delivery 12-month warranty



LC1D40M7

The product must be disposed on European Union markets following specific waste collection and never end up in rubbish bins.



CONTACTOR 600VAC 40AMP IEC +OPTIONS

It provides a 220V 50/60Hz AC coil, 1NO/1NC built-in auxiliary contact, connection by screw clamp terminals. For operating rates until 3600 cycles/hour and environments until 60°C, it procures



SCHNEIDER ELECTRIC LC1D40M CONTACTOR NSNP

FreeUSPS First Class®. See details for shipping
Located in: Knoxville, Tennessee, United States
Delivery: Estimated between Thu, Apr 9 and Mon, Apr 13 to 23917 Returns:

Schneider Electric LC1D40M7 IEC Contactor

Schneider Electric LC1D40M7 IEC Contactor - 40 Amp, Three Pole, 220 VAC Coil, 3 NO, Without built-in bidirectional peak limiting diode suppressor - Application:



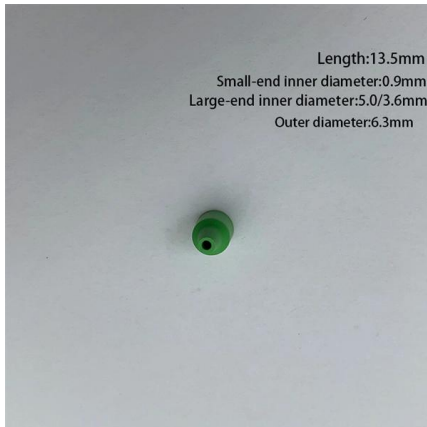
LC1D40M Schneider

PLC Direct is not an authorized distributor. We offer a broad range of in-stock products with minimal lead time.



LC1D40M7 Schneider Electric , Contactors (Electromechanical) , DigiKey

Buy now, ships today. LC1D40M7 - Contactor 3PST-NO (3 Form A) 40 A 220VAC Coil Chassis Mount, DIN Rail from Schneider Electric. View datasheets, pricing and availability from DigiKey now!



Specifications Product datasheet LC1D40M7

CONTACTOR 600VAC 40AMP IEC +OPTIONS
LC1D40M7 Main

LC1D40AMD

Schneider Electric USA. LC1D40AMD - TeSys Deca contactor, 3P (3 NO), AC-3, <= 440V, 40 A, 220V DC standard coil.



LC1D40M7

LC1D40M7 - IEC contactor, TeSys D, nonreversing, 40A, 30HP at 480VAC, up to 100kA SCCR, 3 phase, 3 NO, 220VAC 50/60Hz coil, open.



LC1D40AMD

End of standard service is the last date Schneider Electric will be able to provide you maintenance services (repair, spare parts, etc.). TeSys Deca contactor, 3 poles (3NO), for motor control



LC1D40M7 , Schneider Electric LC1 Series Contactor, 220 V ac Coil, 3

Buy Schneider Electric LC1 Series Contactor, 220 V ac Coil, 3-Pole, 40 A, 22 kW, 3NO, 600 V ac LC1D40M7. Browse our latest Contactors offers. Free Next Day Delivery available.



LC1D40M Schneider Telemecanique Contactor With Coil 220VAC

LC1D40M Schneider Telemecanique Contactor With Coil 220VAC About this item Designed to meet needs of demanding applications New modern look & feel of all machines Easier to install and



Contact Us

For datasheets, pricing, or custom high-speed optical interconnect solutions, please visit:
<https://www.syropy.com.pl>