

Kazakhstan installs transparent optical cable G 654 E





Kazakhstan installs transparent optical cable G 654 E



Why is the fate of the G.654.E fibre fundamentally different from that

G.654.E fibre, with its superior optical performance, delivers better spectral efficiency, improved optical margins and therefore greater resilience. It also allows longer spans between amplifiers, lower

Optical cable with ITU-T G.654.E fibre removes barriers

For example, combining G.654.E with G.652.D can maximise flexibility and futureproof the network," added Fumiyoshi Ohkubo, General Manager,



G.654.E Fibre Cable

In contrast, G.654.E fibres - designed with a larger mode field diameter (MFD) and ultra-low attenuation - significantly improve the optical signal-to-noise ratio (OSNR), making them ideally suited for

The Difference Between G652,G657A,G655 And G654

Optical cables are engineered to meet strict optical,mechanical,and environmental performance standards for reliable long-term operation. Optical



ITU-T G.654.E Fiber, PureAdvance for Terrestrial Long-Haul Networks

2. What is G.654.E? G.654.E fiber is a fiber featuring low attenuation and large core area, and is best suited for terrestrial long-haul and high-capacity transmission links.



G.654.E optical fibers for high-data-rate terrestrial transmission

We examine here several aspects of G.654.E fiber in terrestrial systems including modeled and experimentally measured transmission reach, the use of Raman amplification with pump



G.654.E optical fibers for high-data-rate terrestrial transmission

Request PDF , On Jan 29, 2018, John D. Downie and others published G.654.E optical fibers for high-data-rate terrestrial transmission systems with long reach , Find, read and cite all the research



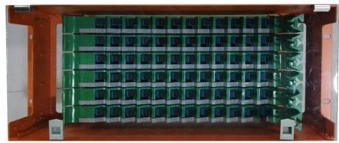
Optical cable with ITU-T G.654.E fibre removes barriers to delivering

A new whitepaper from fibre cable experts ACOME Group and Sumitomo Electric Industries, Ltd. says that existing optical fibre cables will only be able to meet the long-term transmission capacity needs



What Is The Difference Between G.654E and G.654C

Free Samples Available: Test our G.654.E fiber and other products before bulk orders! For high-speed, low-loss optical transmission, G.654.E fiber is



G652, G657A, G655, G654 Optical Fiber

G654: Ultra-low loss optical fiber, mainly used for transoceanic optical cables. The ordinary core is pure SiO2, and the ordinary core needs to be doped



White paper G.654.E Fibre Cable , Acome

Upgrading to 800G and above requires fewer repeaters to amplify the optical signals and can also avoid the need for signal regeneration. Although optical fibre is often praised for its virtually





Ultra-low loss terrestrial long-haul fibers PureAdvance(TM) series

Ultra-low loss (ULL) optical fibers, PureAdvance(TM) series compliant with G.654.E, support high-capacity long-haul terrestrial networks. Employing pure silica core technologies, we promise to contribute to

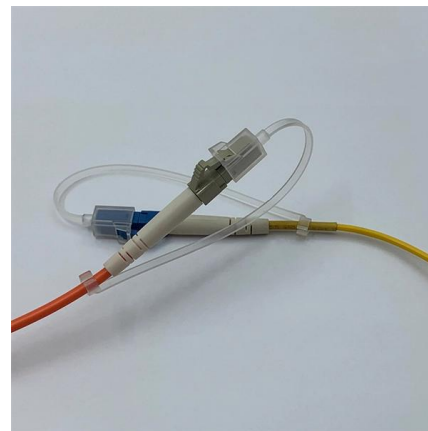


White paper G.654.E Fibre Cable , Acome

By analysing concrete use cases, it highlights innovative solutions--particularly the adoption of G.654.E fibres--that can address these challenges and support the next generation of

What is G.654.E fibre? What scenarios is it suitable for?

However, if G.654.E optical fibre is not applied to the provincial trunk line, subject to the scale effect, the high price of the situation is difficult to change.



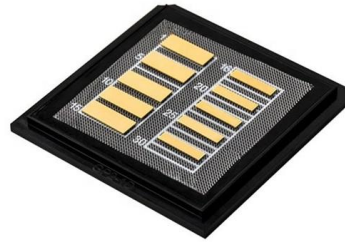
Novel Ultra Low Loss & Large Effective Area G.654.E Fibre in

Abstract: The paper introduced latest ITU-T G.654.E fiber sepecification and typical G.654.E profile design. Our novel ultra low loss & large effective area fiber attenuation and cabling performance



TXF Optical Fiber , Large Effective Area G.654.E Fiber

Corning's TXF optical fiber is G.654.E compliant and the ultra-low-loss, large effective area terrestrial fiber is cost-effective for terrestrial core networks.



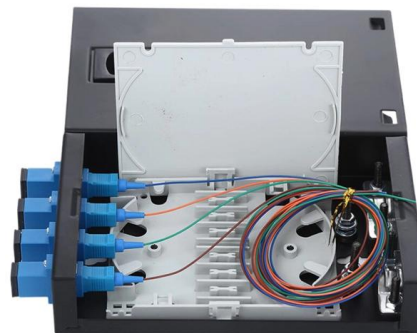
Optical cable with ITU-T G.654.E fibre removes barriers

Their solution combines two existing fibre grades to provide a cable solution that enables longer transmission distances, higher data rates per wavelength, and



Optical cable with ITU-T G.654.E fibre removes barriers

ACOME Group and Sumitomo Electric Industries, Ltd. have announced a new proposal for long-haul optical network cables that will 'break



Optical cable with ITU-T G.654.E fibre removes barriers

For example, combining G.654.E with G.652.D can maximise flexibility and futureproof the network," said Fumiyoshi Ohkubo, General Manager, Market





Why is the fate of the G.654.E fibre fundamentally different from that

Unlike G.655 fiber, which was designed to solve technological problems, G.654.E fiber offers better performance with regard to the fundamental limitations of networks.

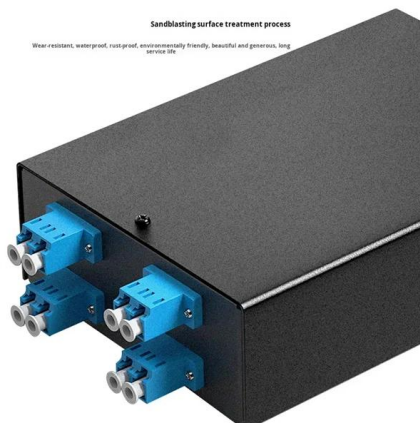


High-Speed Long-Haul Optical Fiber Solution

When deploying G.654.E fiber, careful installation, connector compatibility, testing, and future-proofing considerations should be taken into account. By leveraging the features and benefits

What is the difference between G.654 and G.652 fiber?

The use of G.654.E fiber increases the cost of fiber optic cable compared to G.652.D fiber, but the integrated measurement system saves investment and increased investment in fiber optic cable.



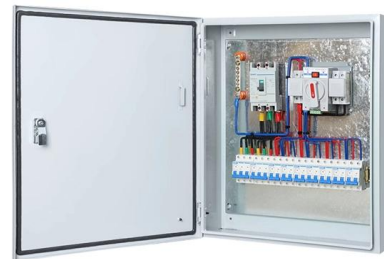
White paper G.654.E Fibre Cable , Solutions de câblage

By analysing concrete use cases, it highlights innovative solutions--particularly the adoption of G.654.E fibres--that can address these challenges and support the



Cutoff Wavelength Shifted Single Mode Optical Fiber E2 (G654E)

E2 (G654E) Cut off wavelength shifted Single Mode Optical Fiber E2 ?G654E? is manufactured with preforms obtained by vapour axial deposition ?VAD?. The fiber complies with ITU T G. 654.E.



G.654.E Fibre Cable

Given that fibre infrastructure is expected to remain in service for decades, hybrid cables that combine both G.652.D and G.654.E fibres offer a practical and future-proof solution.

Optical cable with ITU-T G.654.E fibre removes barriers to delivering

Their solution combines two existing fibre grades to provide a cable solution that enables longer transmission distances, higher data rates per wavelength, and reduced infrastructure requirements -



What is ITU-T G.654 Fiber

ITU-T Recommend G.654 fiber is a cut-off shifted single-mode optical fiber especially used for high bandwidth long distance transmission. The G. 654



STL G654E 125 Fibre

International Standards STL G654E 125 Fibre complies or exceeds the recommendation of ITU-T G.654.E.



ZTO G654E Ultra Low Loss and Large Effective Area Fibre

G. 654 fiber is a single-mode fiber with a pure silica core, designed to minimize loss at a wavelength of 1550 nm. It was developed in the mid-1980s for long-distance



G.654.E Fibre Cable

Optical fibre and its protective cabling structure are intrinsically linked. The fibre itself is a thin strand of high-purity glass engineered to transmit light signals with minimal attenuation.



Contact Us

For datasheets, pricing, or custom high-speed optical interconnect solutions, please visit:
<https://www.syropy.com.pl>