

KVM switcher displayed on the login screen





KVM switcher displayed on the login screen

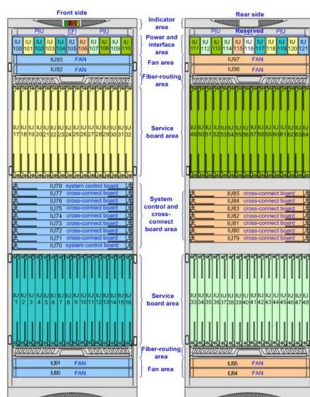


Screen blinks/flashes while switching monitor due to KVM + DP

A few observations: If I switch off my KVM, the issue goes away. If I unplug the hdmi cable from my monitor, the issue persists but only does the "black, image, black, image" once. If I

KVM Switch not Displaying Both Monitors for PC (it works for

Looking at the KVM/DOCK, it does support two monitors from the desktop, but it needs both the display port and HDMI cable from the equivalent ports on the desktop.



How to Troubleshoot Your KVM Switch? #kvmswitch #troubleshooting

Frustrated with your KVM switch causing problems? Whether it's no image on your monitor, USB devices not working, or hotkey switching failing, these issues can be a real headache. Don't worry

Fix KVM Switch Issues: How to Solve Monitor Problems

Quick fixes for KVM switch monitor not working. Learn how to resolve common monitor issues including detection problems, switching delays, and



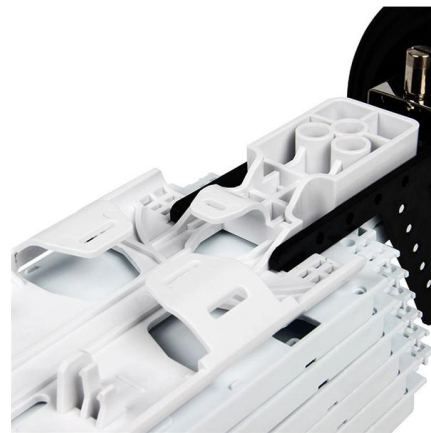
APC Analog KVM Switch User Guide

Features of the Analog KVM Switch The "keep-alive" feature assures all the keyboard and mouse connections work properly if the Analog KVM Switch temporarily loses power. KVM station positions



No Display When using KVM To Monitor

I have a machine with Ubuntu 18.04 with a Nvidia card in it and am attempting to connect it to a monitor through a HDMI KVM. When the machine powers on I see the normal BIOS screens



KV6222A, KV6224A DISPLAYPORT KVM DESKTOP SWITCHES

KV6222A: 2-Port DisplayPort Dual-Head KVM Desktop Switch universal power supply with country-specific adapter clips Quick Installation Guide

KVM Flickering Fix



Troubleshoot KVM flickering and display errors with our step-by-step guide. Fix blank screens and get your dual monitor setup working smoothly.

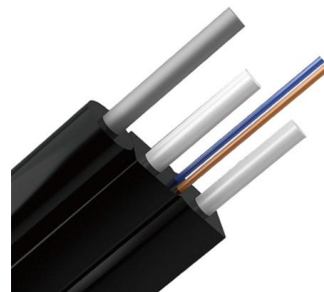


Troubleshooting monitor problems when connected to a KVM switch

Use this procedure to diagnose monitor problems when the monitor is connected to a KVM switch on a 1x8 or 2x8 Console Manager.

Instruction Manual IP KVM Switch

managed computers connected to it. This section describes how to add additional KVM switches to the master unit for greater flexibility, and how to use the on-screen display (OSD)



Monitor not detected with KVM

You will want the KVM switched to the computer that is being turned on for the computer to detect the monitor on boot, then after that, KVM switching should be fine.



Bookworm RPi4 & RPi5 Login/Lock screen with KVM Switch

I have a number of computers, including a Raspberry 4 and 5, on a KVM Switch (switch powered by USB connections). When the Login/Lock screen is displayed I switch to another



Prevent windows from loosing monitor on switch

I'm using the KVM to switch between my gaming computer and my work one. But when I work, the rest of the family would sometimes like to be able

KVM switch problem

Once booted I can continue to connect to it over the network (via ssh), but if I switch the KVM to it it does not seem to detect the screen, keyboard and mouse, hitting keys or wiggling the



Belkin Administrator Guide

Asset Management (0) The asset management section allows the administrator to change the USB parameters that the KVM switch will use to identify itself to to an asset tracking system.



KVM Switches General Troubleshooting , StarTech

Use the video cable, KVM switch, video source, and video destination in another setup to see if the problem is with the components or the setup. Use a different



Dual/Triple Monitor KVM Switch Splash Screen

At least one input source can be displayed normally All input sources correspond to a monitor splash screen Cross-testing method: At least one input

Common Problems with KVM Switch & Solutions (PART

Problem 3: The KVM switch is on but nothing shows on the display or it shows "no signal".
Solution: First, check if the input source is powered on, and



Dell Remote Console Switch Software User's Guide

Extensive Remote Console Switch Management
The RCS software allows you to add and manage multiple switches in one system. Once a new switch is installed, you can configure switch



KVM switch doesn't display an image.

The VGA part works perfectly, but the peripherals don't input anything despite working perfectly for switching KVMs. This leads me to the conclusion that maybe there are proprietary



What is a KVM switch? , ATEN Corporate Headquarters

Fig. 1 By using a KVM switch, a user can access multiple PCs through a single keyboard, video (monitor), and mouse setup. To switch between the

Second monitor not detected at boot through KVM

I have 3 Dell computers connected through a KVM to dual monitors. With PCs 2 & 3 I never have an issue with both monitors being detected at boot up, with PC number 1, however, 9



Second monitor not detected at boot through KVM

Windows 10 can't detect the second screen: This is a just a variation of this problem, and if you're having issues detecting a second screen, you might want to try some of our solutions.



Blank Screen when switching KVM switch

Hi, I recently updated (add/remove software) and when I switch my KVM switch from my Windows laptop to my Linux computer I get a blank screen. This use to happen after a long period of



Contact Us

For datasheets, pricing, or custom high-speed optical interconnect solutions, please visit:
<https://www.syropy.com.pl>