

Juniper checks the interface optical module

SUPPORTS DIN RAIL INSTALLATION





Overview

To check the status of SFP modules on Juniper devices, utilize the command "show interfaces diagnostics optics" to retrieve detailed information about the SFP module status and transceiver data for various types of optical transceivers (SFP, SFP+, XFP, QSFP+, CFP) installed in. The information provided by this command is known as digital optical monitoring (DOM) information. During times, Juniper OS has offered different command versions to display transceiver information - legacy Juniper show SFP type, to nowadays versions show interfaces diagnostics. Their most popular Operating Software (OS) is named Junos OS, with the latest version today, 22.



Juniper checks the interface optical module



How To Check Sfp Module In Juniper

Enter the command "show interfaces diagnostics optics " to display the SFP module status and transceiver information. This command will provide information such

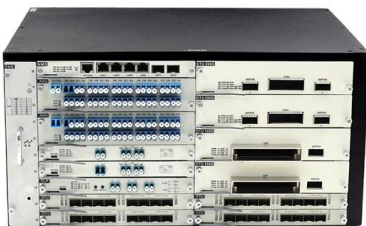
show interfaces diagnostics optics , Junos OS , Juniper Networks

```
show interfaces diagnostics optics xe-0/1/0  
(SFP+ Transceiver) user@switch> show  
interfaces diagnostics optics xe-0/1/0 Physical  
interface: xe-0/1/0 Laser bias current : 4.968 mA  
Laser output
```



show interfaces diagnostics optics (Security)

Generally, a high alarm or low alarm indicates that the optics module is not operating properly. This information can be used to diagnose why a transceiver is not working.



How do i check the sfp status on my juniper switch?

To check the SFP status on a Juniper switch, you can use the command "show interfaces diagnostics optics" or "show interfaces diagnostics optics



Will Third-Party SFP Module Work in Cisco/Juniper/HP Switches?

You can often make non-OEM optics work in Cisco, Juniper and HPE/Aruba boxes, but there are three practical limits to accept up front: vendor enforcement (software checks and possible blocking),

show interfaces diagnostics optics (Security)

Note: In a chassis cluster, the show interfaces diagnostics optics command works only on the node that is primary in redundancy group 0 (RG0).



How To Check Sfp Module In Juniper

To display diagnostic data for SFP modules on Juniper EX or QFX Series switches, utilize commands like show sfp 1 to check the status and details





How can I find what optic is in an interface for a Juniper

As the title states, how can I see what optic I have installed in an interface for an MX router?



How to test if an sfp is working on juniper qfx5100 : r/networking

Run (the juniper equivalent of) "show interface" and check if the interface bandwidth is reported as it should be (e.g. 10G if you plugged in an SFP+) If the SFP supports DOM (Digital Optical Monitoring)

show interfaces diagnostics optics , Junos OS , Juniper Networks

Display diagnostics data and alarms for Gigabit Ethernet optical transceivers (SFP, SFP+, XFP, QSFP+, or CFP) installed in EX Series Switches or QFX Series Switches.



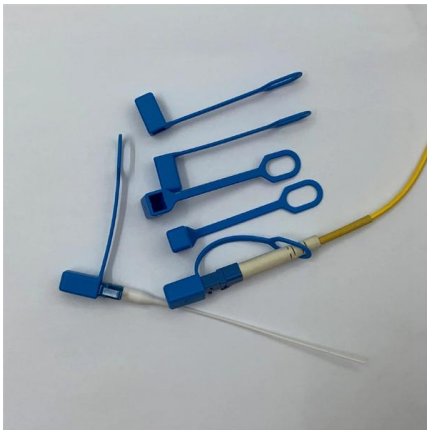
Will Third-Party SFP Module Work in Cisco/Juniper/HP Switches?

Short answer up front: usually yes -- but the reality on the ground is layered. You can often make non-OEM optics work in Cisco, Juniper and HPE/Aruba boxes, but there are three practical limits to



show interfaces diagnostics optics (Routers)

Display diagnostics data, warnings, and alarms for Gigabit Ethernet, 10-Gigabit Ethernet, 40-Gigabit Ethernet, 100-Gigabit Ethernet, or Virtual Chassis port interfaces. Displays diagnostics for optical

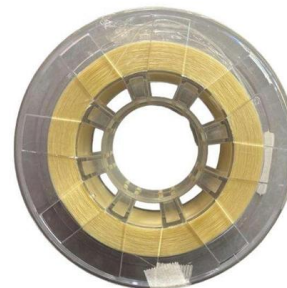


show interfaces diagnostics optics , Junos OS , Juniper Networks

Output Fields lists the output fields for the show interfaces diagnostics optics command. Output fields are listed in the approximate order in which they appear.

show interfaces diagnostics optics , Junos OS , Juniper Networks

show interfaces diagnostics optics Syntax
Description Display diagnostics data and alarms for Gigabit Ethernet optical transceivers (SFP, SFP+, XFP, QSFP+, or CFP) installed in EX Series Switches or



How To View Port Status And Optical Module

This document describes how to check the operating status and internal parameters of optical modules on Juniper devices. Using the Moduletek SFP-10G-LR optical



How To Check Interface Details In Juniper

To check the status of SFP modules on Juniper devices, utilize the command "show interfaces diagnostics optics" to retrieve detailed information



How to check detailed optic diagnostic info and alarm history

In addition to checking the current status of an optic via the 'show interfaces diagnostics optics ' command, it may also be necessary to examine more detailed information

[EX/QFX] How to view the diagnostics data and alarms for Optical

This article describes the two-step procedure to view the diagnostics on the optical VCP ports. Symptoms The procedure for viewing the diagnostics data and alarms output on optical VCP



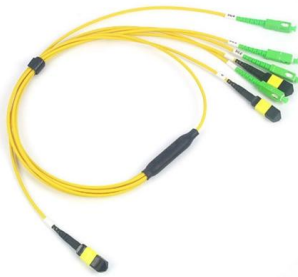
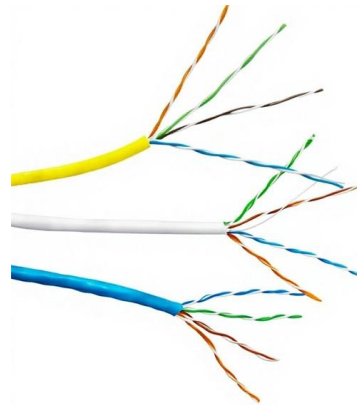
How To Check Sfp Module In Juniper

This information is known as digital optical monitoring (DOM) information. To check the SFP status on a Juniper switch, use the command



Juniper OS Transceiver Commands: SFP & QSFP

Master Juniper OS transceiver monitoring commands. Learn show interfaces diagnostics optics for 10G SFP+ and 100G QSFP28 transceivers on



show interfaces diagnostics optics-profile , Junos OS , Juniper Networks

Display diagnostic data for the supported optics (QSFP+, QSFP28, QSFP-DD). No output is displayed for unsupported optics (SFP, CFP, etc.) and for QSFP DAC (direct attach cables) modules.

show interfaces diagnostics optics , Junos OS , Juniper Networks

Generally, a high alarm or low alarm indicates that the optics module is not operating properly. This information can be used to diagnose why a transceiver is not working.



Contact Us

For datasheets, pricing, or custom high-speed optical interconnect solutions, please visit:
<https://www.syropy.com.pl>