

# Join the QSFP28 optical module 40G franchise





## Join the QSFP28 optical module 40G franchise

---

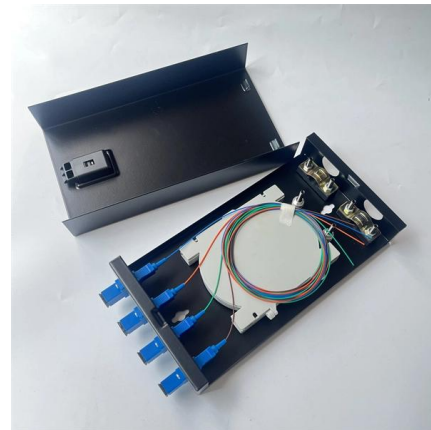


### 40G QSFP+/100G QSFP28 , Carritech Optics

40G QSFP+/100G QSFP28 The 40G QSFP+/100G QSFP28 transceiver category offers state-of-the-art optical modules optimised for ultra-fast data transmission at

### QSFP28 Transceiver: The Ultimate 100G Optical

Discover ascentoptics about QSFP28 transceiver solutions. Master 100G optical modules with in-depth insights and trusted guidance.



### 100G QSFP28 - Optcore

100G QSFP28 QSFP28 is a newly popular transceiver form factor defined by SFF Committee SFF-8636 and SFF-8665. As the upgraded version of QSFP+, it

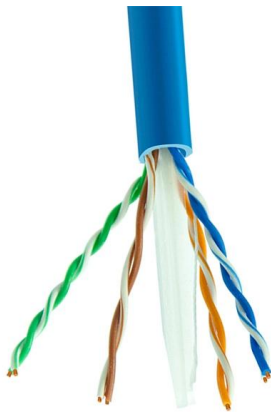
### Everything You Need to Know About QSFP28 Ports:

Learn about QSFP28 ports: features, cable options (DAC, AOC, SMF, MMF), interoperability with SFP, and use cases in data centers, AI/HPC and



### QSFP+ 40G Optical Transceivers, 40G Fiber Optic Transceiver

40G QSFP+ BIDI optical transceiver module is a pluggable optical transceiver with a duplex LC connector interface for short-reach data communication and interconnect applications using Multi



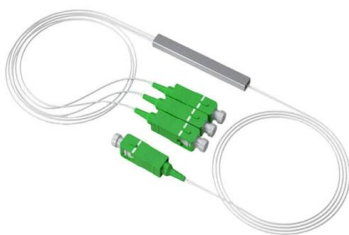
### 100G QSFP28 Cable and Transceiver Modules Data Sheet , FS

The QSFP28-ERL-100G Module supports link lengths of up to 25km over SMF with duplex LC connectors. The 100G ERL QSFP28 Transceiver is designed to transmit and receive serial optical



### Introduction to 100G QSFP28 Optical Transceiver

100G QSFP28 optical transceivers are designed for 100 Gigabit Ethernet, EDR InfiniBand, or 32G Fibre Channel. What is 100G QSFP28 optical transceiver?





## What Is QSFP28? A Clear Explanation of 100G Transceivers

Compared with legacy 40G QSFP+ modules, QSFP28 provides 2.5x higher throughput within the same physical footprint, making it the dominant choice for spine-leaf data centers, cloud infrastructure, and



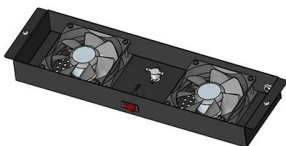
- IP65/IP55 OUTDOOR CABINET
- OUTDOOR TELECOM CABINET
- OUTDOOR ENERGY STORAGE CABINET
- 19 INCH

### 100G QSFP28 4WDM-40 DML 40km Optical

This product is a 100Gb/s transceiver module designed for optical communication applications compliant to QSFP and 4WDM-40 MSA standards.

### 40G QSFP+

In the fiber network, different types of optical modules used in different networks are also different, there are 10G/25G/40G/100G, optical module packages are also



### 100G QSFP28 Transceiver Modules , Optical

FS offers a growing portfolio of 100G QSFP28 modules. The 100G QSFP28 module solution provides high-performance 100GbE connectivity for data centres,



## QSFP28 100G: Interoperability with 40G, 25G, and 10G

In this article, we will explore how QSFP28 100G plays with 40G, 25G, and 10G modules, discussing the compatibility, cabling, and considerations for each scenario.



### Is QSFP28 Still the Right Choice for 100G Optical Networks?

A deep dive comparison on QSFP28 optical modules for 100G networks. Understand its core technology, key advantages, and application relevance against alternatives.

### 100Gb/s QSFP28 Transceivers

Amphenol's 100G QSFP28 optical modules include SR4, AOC, AOC break out, CWDM4, LR4, ER4 Lite, ER4 and ZR4 series, which adopt LC or MPO optical ports and are compatible with IEEE802.3bm,



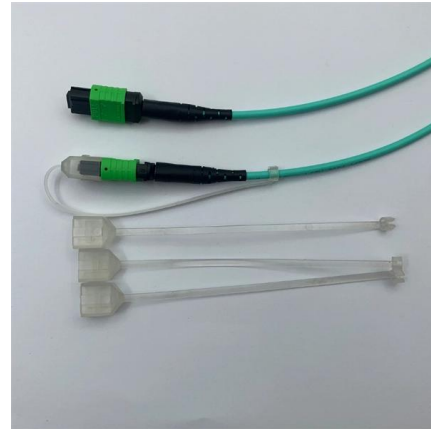
### 100G QSFP28 Explained: Key Features, Applications,

As data centers, cloud computing, and enterprise networks demand higher bandwidth and faster data transmission, the 100G QSFP28 transceiver



## QSFP28 Transceiver: Complete 100G Connectivity Guide (2026)

QSFP28 transceiver guide covering module types, pricing, compatibility, and deployment. Learn how to choose, deploy, and troubleshoot 100G QSFP28 optics.



## 100G Optical Module Selection Guide: Advantages and Types of QSFP28

Explore the QSFP28 100G optical module, a vital component for high-speed network connections. Discover its unique features, advantages, and various types to meet diverse

## 100G QSFP28 Single? : Optical Transceiver Module , NEC

The NEC's 100G QSFP28 optical transceiver that enables high-speed data transmission of 100Gb/s. We offer a diverse range of options that support



## 40/100GBASE-SM4 SWDM4 QSFP28 Dual Rate 4 x

40/100GBASE-SM4 SWDM4 QSFP28 Dual Rate Optical Transceiver Module (Dual Rate, MMF, 850/880/910/940nm, 100m, LC, DOM) The 40/100GBASE-SM4



## Everything You Need to Know About QSFP28 Port: The

To connect QSFP28 devices to SFP28 devices, use QSFP28-to-SFP28 adapters or breakout cables. These bridge the form factors and enable



### 100G QSFP28 Cable and Transceiver Modules Data Sheet

100G ERL QSFP28 Transceiver is designed to transmit and receive serial optical data links up to 106.25Gbps data rate by PAM4 modulation format over single-mode fiber.

### 100G Fiber Optic Transceivers -- QSFP28

100G QSFP28-PSM4 is a Four-Channel, Pluggable, Parallel, Fiber-Optic QSFP28 Transceiver for 100G Ethernet Applications. The QSFP28 full



### 100G QSFP28 Optical Module Selection Guide: Medium to Long

The QSFP28 module can increase the data transmission rate of 100Gbps, which can effectively meet high bandwidth requirements. And because they are transmitted through optical



## QSFP28 SR4 Optical Transceiver Module Overview

QSFP28 100G SR4 is a compact hot-pluggable optical transceiver designed for high-speed, short-distance 100G Ethernet networks. Operating at



## 100G QSFP28 ER4 40km Optical Module

HTFuture's 100G QSFP28 ER4 Optical Module supports 40km SMF transmission at 100Gbps, ideal for high-speed data centers and telecom applications.

## 40G QSFP+ Transceiver Modules , Optical Transceivers

FS 40G QSFP+ optical transceiver module solutions offer a full range of QSFP+ modules from 150m to 80km reach, and used for high-density switching, routing and data center applications. Click to get



## QSFP28 optical transceiver modules that use MPO connectors

QSFP28 modules are designed to operate with 4 channels of 25G (the "Q" stands for Quad) resulting in a combined bandwidth of 100G links. QSFP28 ports are also compatible to support QSFP+ which



## FS 40/100G QSFP28 SWDM4 Optical Transceiver

What is FS 40/100G SWDM4 Module? The FS 40/100G SWDM4 dual-rate module is a specialized type of optical transceiver module designed to



## QSFP28 100G: Interoperability with 40G, 25G, & 10G

A 100G QSFP28 optic fiber module is a hot-pluggable transceiver module with a data rate of 100G. Each lane can carry up to 28Gbps of data, as

## Overview of 100G Ethernet QSFP28 Transceivers

At the center of most 100G deployments is a compact, hot-swappable optical module known as QSFP28. If you've worked with QSFP+ at 40G before, QSFP28 will feel familiar in size and handling,



## Introduction to 40GBASE QSFP+ Optical Modules

40GBASE Optical modules are various of optical transceivers with 40Gbps transmission rate, in which the QSFP is the main form factor. And the 40G

## QSFP28 optical transceiver modules that



### use MPO connectors

100G QSFP28 optical transceiver modules that use MPO connectors QSFP28 modules are designed to operate with 4 channels of 25G (the "Q" stands for Quad) resulting in a combined bandwidth of 100G

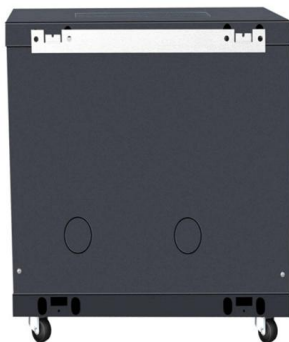


### FS Community

Hier sollte eine Beschreibung angezeigt werden, diese Seite lässt dies jedoch nicht zu.

### 25G/40G Optical Transceiver Modules

Buy 25G and 40G fiber optic transceivers for high-bandwidth migration at QSFPTEK online store. Cost-effective, compatibility guaranteed and same-day shipping.



### How to Choose QSFP Modules: 40G, 100G & QSFP-DD Guide

Learn how to choose QSFP modules for 40G, 100G, QSFP28, QSFP56, and 400G QSFP-DD networks. Compare speed, distance, fiber type, compatibility, and LINK-PP products.



## Contact Us

---

For datasheets, pricing, or custom high-speed optical interconnect solutions, please visit:

<https://www.syropy.com.pl>