

Japanese network security equipment SFP





Overview

Small Form-factor Pluggable (SFP) is a compact, hot-pluggable network interface module format used for both telecommunication and data communications applications. SFP types SFP transceivers are available with a variety of transmitter and receiver specifications, allowing users to select the appropriate transceiver for each link to provide the required optical or electrical reach over.



Japanese network security equipment SFP



An introduction to SFP ports on a Gigabit switch

An introduction to SFP ports on a Gigabit switch SFP ports enable Gigabit switches to connect to a variety of fiber and Ethernet cables and extend switching functionality throughout the

Mitsubishi Electric and Nozomi Networks to Expand

Mitsubishi Electric will integrate its factory-automation (FA) equipment and OT security solutions with Nozomi Networks' OT network-visualization and

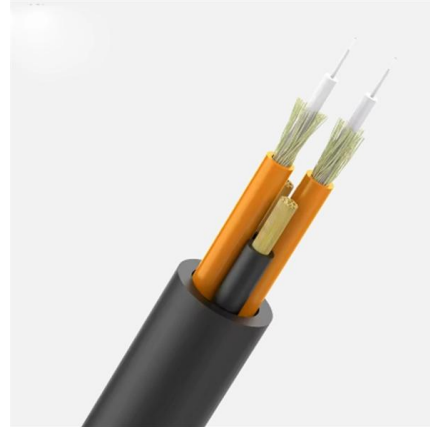


The Ultimate Guide to SFP Modules (2026): Types,

Read the definitive 2026 guide on SFP modules. We explain Single Mode vs Multimode, DDM diagnostics, and how to choose the right transceiver for Cisco,

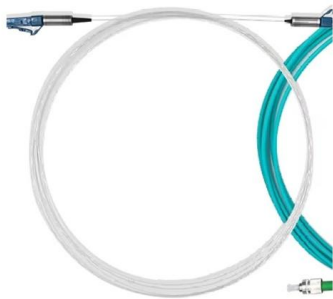
RJ45 vs. SFP: Which network interface should you use?

For instance, network switches typically feature SFP and RJ45 ports, which differ in several respects beyond just their pinout.



35 Top Japanese Network Security Companies and Startups of 2021

This article showcases our top picks for the best Japanese based Network Security companies. These startups and companies are taking a variety of approaches to innovating the



Understanding SFP Modules: A Complete Guide for Business Solutions

What Are SFP Modules and Why Are They Essential for Modern Networks? Small Form-factor Pluggable (SFP) modules are pivotal in modern networking, acting as compact, hot-swappable



Japan SFP+ Module Market 2026: Automation Growth Powers Size

The study evaluates regional demand trends, distribution networks, consumer behavior, and regulatory environments that influence the SFP+ Module industry within Japan.



Network Equipment Suppliers in Japan

Network Equipment Suppliers in Japan Network equipment is used to split, switch, boost, or direct packets of information along a network. This product area includes network hubs, switches, routers,



GS3SFP-232-GE , HARDWARE , GLBB Japan

The GLBB Secure Smart Serial (GS3) is a highly scalable serial console server that can be used from a single unit to an enterprise infrastructure. Zero-touch



Yamasaki Fiber Optic SFP Transceivers

In this blog post, we'll delve into the fascinating world of Yamasaki Fiber Optic SFP transceivers. We will explore their features, applications, and the impact they have on modern



RJ45 vs SFP: Understanding the Differences and Uses

Learn the differences between SFP and RJ45 ports for network connectivity. Explore the uses of SFP and RJ45 ports in network infrastructure.



SG-5110, Multi-WAN Security Gateway with 8 Gigabit

Combining security, routing, wireless control, SPI firewall, and advanced threat



What Is an SFP Module? -- Complete Guide to SFP, SFP+ & SFP28

Learn what an SFP module is, how it works, its types, specifications, compatibility, and use cases in modern networks, including updated standards and trends for 2026.

SFP Interface: Definition, SFP vs. RJ45, Uses and Applications

? What Is an SFP Interface? A Small Form-Factor Pluggable (SFP) interface is a modular networking interface used in switches, routers, and other network equipment to support



What Is an SFP Optic Module and How Does It Work

SFP optic modules convert electrical to optical signals for fast, long-distance data transfer. Hot-swappable, versatile, and compatible with various



Network Basics , What is SFP Module & How Does it Work?

In this blog post, we will talk about the basic question "what is SFP module" and how they work in a typical network environment. Read the full article to understand these basic concepts.



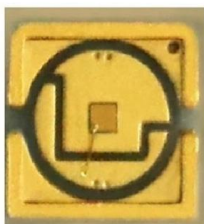
What is SFP Port? Everything You Need to Know

An SFP port is a physically small slot in a networking device that accepts an SFP module. This definitive guide tells you everything about it.



IODATA 5-Port 10G Compatible SFP+ Equipped 2.5Gbps

We work hard to protect your security and privacy. Our payment security system encrypts your information during transmission. We don't share your credit card details with third-party sellers, and



SG-5110, Multi-WAN Security Gateway with 8 Gigabit

SG-5110, Multi-WAN Security Gateway with 8 Gigabit RJ45 Ports, 1x SFP, 1x SFP+, Up to 10 WAN Ports, Load Balancing Build a secure and flexible network with the



GS3SFP-232-GE , HARDWARE , GLBB Japan

What security protocol does GS3 use? GS3 uses SSHv2 to ensure secure connection to the equipment console. Back to HARDWARE Page



SMART NETWORK SOLUTION

Solutions for design and deployment network infrastructure that supports Intelligent Buildings. Providing Gigabit-Speed cabling & Wi-Fi network systems and

SFP Networking: Comprehensive Guide for Network

Data Centers: In data centers, SFP modules are crucial for maintaining robust and flexible network architectures. They support rapid data transmission between



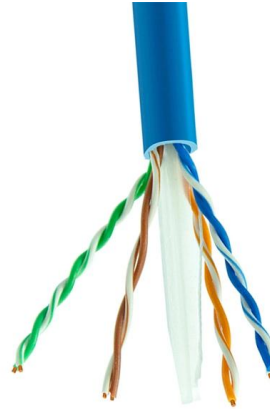
Optcore SFP Module Price List in Japan (2022)

This article shows the pricing of the most common SFP modules, and we hope that these price lists in Japan will assist you in locating the optimal SFP module for your needs. There are





PLANET GPN-SFP supports the standard OMCI defined by ITU-T, as well as standard OAM and extended OAM defined by Telecom CTC 2.1/3.0, including configuration, alarm management,



Optcore SFP Module Price List in Japan (2022)

This article shows the pricing of the most common SFP modules, and we hope that these price lists in Japan will assist you in locating the optimal SFP module for your needs.

Contact Us

For datasheets, pricing, or custom high-speed optical interconnect solutions, please visit:
<https://www.syropy.com.pl>