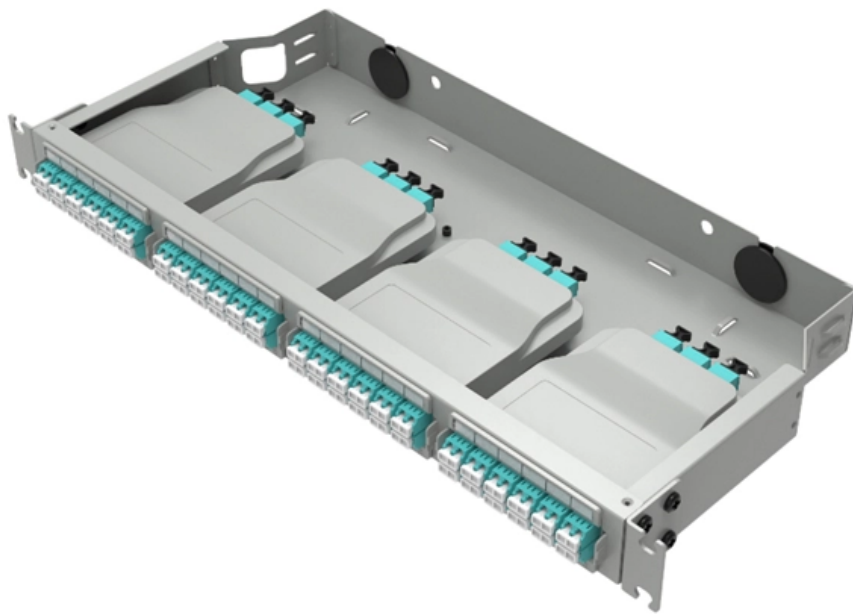


Japanese Spot Single-Fiber Bidirectional SFP





Japanese Spot Single-Fiber Bidirectional SFP



What is the Difference Between SFP and BiDi SFP?

Compare SFP vs BiDi SFP: key differences, fiber requirements, compatibility, and best use cases to help you choose the right SFP module for

Single-fiber Bidirectional Transceivers

Bidirectional transceivers transmit and receive optical signals through a single fiber, saving optical fiber resources. This is useful where fiber resources are scarce and



Bidirectional SFP Modules/Transceivers

Versitron offers single-mode and multimode Bidirectional SFP Modules suitable for point-to-point networking, metro access ring, PON, and FDDI. Get IEEE



Differences Between Dual Fiber SFP and Simplex SFP

This fiber port utilizes a single fiber for both transmitting and receiving, which makes simplex SFP modules a cost-effective solution in



What is the BiDi SFP module?

When the optical fiber cable link is interrupted unexpectedly in the single-fiber bidirectional transmission system, the maintenance and repair time

Bidirectional SFP Modules/Transceivers

Unlike traditional SFP modules that require two fibers (one for sending and one for receiving data) BiDi SFP modules utilize wavelength-division multiplexing (WDM)



BiDi SFP Modules: Single-Fiber Bidirectional Guide

BiDi SFP modules use a single fiber strand for both transmitting and receiving data. Learn how single-fiber bidirectional technology works, wavelength pairs, and when to choose BiDi over standard

1000Base-BX WDM Bi-Directional SFP



The TP-LINK’s TL-SM321B-2 is developed in accordance with the Small Form Pluggable Multi-Source Agreement (SFP-MSA). As a WDM Bi-Directional optical



Exploring the Differences: SFP vs BiDi SFP

Two commonly used transceivers in fiber optic communication are Small Form-Factor Pluggable (SFP) and Bidirectional SFP (BiDi SFP). In this

1G BiDi SFP Module Selection Guide: Maximize Fiber

Choose the right 1G BiDi sfp module by checking compatibility, wavelength pairing, fiber type, and distance to ensure reliable network performance.



Bidirectional SFP Selection Guide for Single-Fiber Links

Learn how to choose the right bidirectional SFP for single-fiber links. Compare wavelengths, distances, and compatibility to optimize your optical network.





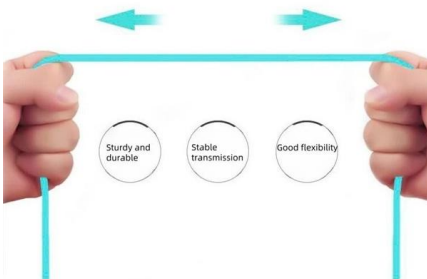
2025 SFP vs. BiDi SFP: Key Differences and Applications in Networking

The BiDi SFP (Bidirectional SFP) is a more advanced type of transceiver that allows bidirectional communication over a single optical fiber. This is achieved by using Wavelength



More durable and robust

The outer layer is made of environmentally friendly PVC, which is soft and elastic. It can be stretched without damage, so you can use it with confidence.



Single Fiber Bidirectional SFP Transceivers

Single Fiber Bidirectional SFP transceivers use simplex single-mode fiber to double the bandwidth, data rates up to 4G and distances up to 160km.

BiDi SFP: The Complete Guide to Bidirectional SFP Transceivers and

BiDi SFP technology offers a cost-effective, fiber-saving, and high-performance solution for modern optical networking. By halving fiber requirements, it enables rapid network expansion in



1G Bidirectional Transceivers for Service Provider and

The Cisco 1G bidirectional transceivers provide several benefits for both service provider and IoT applications. These transceivers offer the following





Comprehensive Guide to FS 10G BiDi SFP Modules

Enter the 10G BiDi (bidirectional) SFP+ module --an elegant solution that enables full-duplex communication over a single fiber strand using wavelength division multiplexing (WDM). FS



Single Fiber (BiDi)

Teroline single fiber bidirectional SFP module for Gigabit Ethernet applications over single mode optical fiber. The module can be used with any network device that accepts standard MSA transceivers -

What Is a Single Fiber SFP? A Complete Guide for Beginners

A single fiber SFP, also known as a BiDi SFP, is designed precisely for this purpose--enabling bidirectional data transmission over a single strand of optical fiber.



The Complete Guide to BiDi Transceiver

What Is BiDi Transceiver? BiDi transceivers have become synonymous with reliable and high-performance networking, which can achieve



1km Single Fiber SFP 11D K001B55

1 km Single Fiber SFP , SFP-11D-K001B55
OptoSpan 1 km Single Fiber SFP transceiver for 1G BX Ethernet. 1Gb single strand bidirectional SFP transceiver for multimode fiber. Details: This advanced



BiDi Optical Modules: Unlocking Single-Fiber

Comprehensive guide on BiDi Optical modules, detailing single-fiber bidirectional connectivity, deployment tips, troubleshooting, and multi-speed

Exploring the Differences: SFP vs BiDi SFP

Two commonly used transceivers in fiber optic communication are Small Form-Factor Pluggable (SFP) and Bidirectional SFP (BiDi SFP). In this article, we'll delve into the key differences



Comprehensive Guide to SFP BiDi 10G 40km Modules: Selection

Discover Link-PP's reliable and compatible SFP BiDi 10G 40km modules for high-speed, cost-effective single-fiber 10G networks. Learn about selection tips, wavelength pairing, installation



SFP modules - transceivers for 1/2/4G fibre channel

BiDi (Bidirectional) SFP - Single-fiber SFP modules for FTTH and fiber-efficient networking, allowing both transmit and receive signals to travel over a single



Contact Us

For datasheets, pricing, or custom high-speed optical interconnect solutions, please visit:
<https://www.syropy.com.pl>