

# **Japan Telecom Chassis 1000mm Deep**





## Japan Telecom Chassis 1000mm Deep

---



### 800mm Wide x 1000mm Deep Server Cabinets/Racks

Explore the range of 800mm Wide x 1000mm Deep Server Cabinets/Racks available at Comms Express, Networking Reseller - Free Delivery Available To Buy Online

### LMS Data 12U 1000mm Deep Server Cabinet, Floor Standing, 19-Inch

Offering excellent quality coupled with value for money, this 12U 1000mm deep Server cabinet is ideal for use as an IT Data system, Network Storage NAS cabinet or Telecoms installation, no matter how



### Chassis and enclosures design

TELEPLATFORMS provides a full range of services for the design of enclosures and chassis of radio electronic equipment (REA). We can develop both a new product and update and improve the

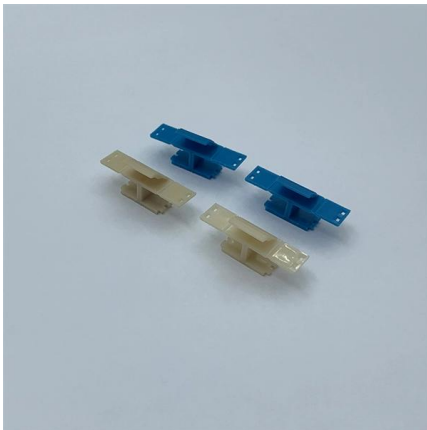
### Rittal TS System Chassis, For Use With 1000 mm W x 1000 mm D

Rittal TS System Chassis, For Use With 1000 mm W x 1000 mm D Enclosures, Carbon Steel SKU: RTL8612000 Manufacturer Part Number: TS 8612.000 UPC: 63988934131



### **Tokyo Metro 1000 series , Locomotive Wiki , Fandom**

The Tokyo Metro 1000 series is a Japanese city commuter electric multiple unit operated by Tokyo Metro since April 2012. The 1000 series was a completely new



### **Japan's Telecom Sector: A New Era of Connectivity with 5G and**

The report delves deep into two pivotal areas shaping the future of connectivity in Japan: the burgeoning satellite internet sector and the rapidly evolving mobile market. Satellite Internet



### **Communications modular servers, telecom blades, ATCA, xTCA,**

High performance COTS embedded computing systems including xTCA based chassis platforms.





### 600mm Wide x 1000mm Deep Server Cabinets/Racks

Explore the range of 600mm Wide x 1000mm Deep Server Cabinets/Racks available at Comms Express, Networking Reseller - Free Delivery Available To Buy Online



### Server Rack Buying Guide 2026: Choose the Right

We recommend a minimum of a 1000mm deep cabinet with mesh doors to ensure your hardware doesn't throttle due to heat. For networking-only

### J:COM Selects CommScope to Power 10G Broadband

The capability to support 10G EPON along with fiber deep upgrades allows J:COM to take immediate advantage of broadband spectrum expansions,



### 37 results from 6 suppliers for "Telecom racks & chassis"

Numerous top-rated manufacturers & wholesalers in Global Sources have been carrying trendy telecom racks & chassis products here! Feel free to inquire directly with suppliers for more details of

### Communications Chassis



Crafted using top-tier metals, the chassis boasts strength without compromising on flexibility. Every curve, every edge is sculpted, keeping in mind the nuances of



- ✓ 100KWH/215KWH
- ✓ LIQUID/AIR COOLING
- ✓ IP54/IP55
- ✓ BATTERY 6000 CYCLES

### Tokyo Skytree: the World's largest Telecom Tower

The Tokyo Skytree took four years to construct and is double the height of Japan 's 333-meter Tokyo Tower.

### J:COM Selects CommScope to Power 10G Broadband for Japan's

The capability to support 10G EPON along with fiber deep upgrades allows J:COM to take immediate advantage of broadband spectrum expansions, virtualized and distributed access



Hier sollte eine Beschreibung angezeigt werden, diese Seite lässt dies jedoch nicht zu.

Industrial control box, Junction box, Distribution box, Audio amplifier chassis, and more. Choose from a wide range of over 48,000 items, and with no purchase



### 03.SMI.163.ATCA\_WP.qxd

The architecture provides wider vendor and product choice and flexibility, promotes interoperability as hardware vendors develop blades, chassis, and backplanes that are integrateable. As a result,

### Japan Telecom MNO Market Size, Growth & Outlook,

The Japan Telecom MNO Market worth USD 125.98 billion in 2026 is growing at a CAGR of 3.28% to reach USD 148.06 billion by 2031. NTT Docomo,

Focus creates quality products



### Press Releases : DOCOMO, NTT, NEC and Fujitsu

TOKYO and KAWASAKI, JAPAN, April 11, 2024 --- NTT DOCOMO, INC., NTT Corporation, NEC Corporation and Fujitsu Limited jointly announced





## Telecommunication and Radio Equipment for Japan

Certify Your Telecom and Radio Equipment for Use in Japan TÜV Rheinland Japan has been accredited by the Japanese Ministry of Internal Affairs and



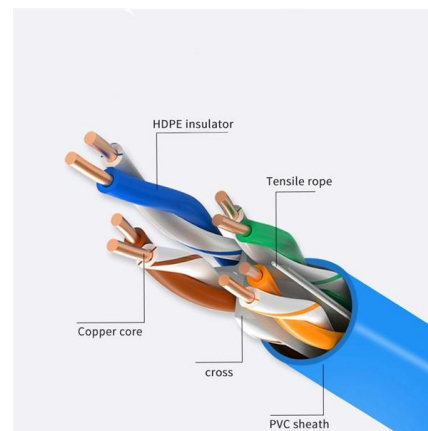
### KDDI CABLE INFINITY

KDDI CABLE INFINITY KDDI Cable Infinity (KCI) is working on 365x24 basis for constructions and repairs of telecommunication submarine cables for worldwide



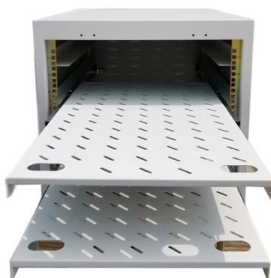
### RackRax 800mm x 1000mm Server Cabinet , Server

Mesh front and rear doors plus a vented roof add up to offer maximum ventilation. The cabinets are fitted with quick release front and rear perforated doors



### 1Finity

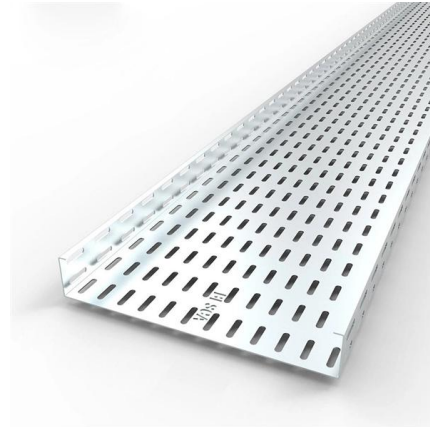
1Finity, a wholly owned subsidiary of Fujitsu, combines decades of trusted experience with renewed innovation, agility, and customer success. While this





## Telecommunication and Radio Equipment for Japan , JP

We provide "One-Stop Service" to issue certificates for radio equipment together with telecom terminal approvals and certification according to the Japanese electric



### US9986654B2

A telecommunications chassis is configured for receiving telecommunications equipment. The chassis defines a top, a bottom, a front side, a rear side, a right side, and a left side. The



### RackRax 800mm x 1000mm Server Cabinet , Server

RackRax 19" Server Cabinets combine all the features of a premium Server Racj Cabinet including the aesthetically pleasing design



### Japan's Full-Fiber Network Expansion

Japan's journey to becoming a leader in fiber optic network expansion is a story of vision, perseverance, and strategic investment. From its early





## How Japan Built One of the Coolest Telco

Discover how Japan built one of the world's most advanced telecom infrastructures--driven by innovation, government policy, and cutting-edge



## Deutsche Telekom GBS Japan K.K.

Deutsche Telekom Business Solutions is Deutsche Telekom's corporate customer arm. Using a global infrastructure of data centers and networks, T-Systems operates information and communication

## Contact Us

---

For datasheets, pricing, or custom high-speed optical interconnect solutions, please visit:  
<https://www.syropy.com.pl>