

Items stored under the electrical distribution box



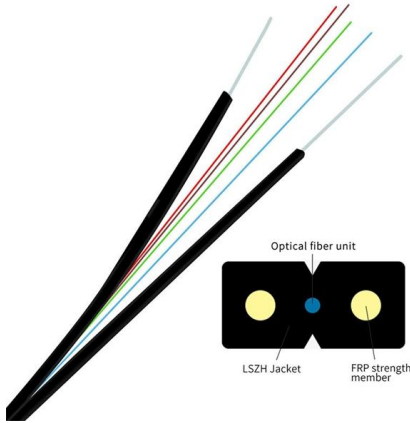


Overview

It also serves as housing of some important devices such as; Breakers, Fuses, residual current devices (RCDs), and Bus bars which aid in the safe running of Electrical power as well as the proper distribution. Inside, you'll find parts like circuit breakers and fuses that protect the system from problems like overloads and short circuits. The distribution box (DB box) helps safely and efficiently distribute electrical power. It receives power from the main electrical supply and divides it into separate circuits, each.



Items stored under the electrical distribution box



Ultimate Guide To Distribution Boxes Db Boxes Types

This ultimate guide explains what a distribution box does, its internal components, common types, real-world applications, and how to select the right DB Box for

The Complete Guide to Distribution Box: Installation, Types & More

Understanding the key components of a distribution box helps you make informed decisions about installation and maintenance. Each element plays a specific role in ensuring safe



What is the Internal Structure of The Distribution Box

Learn about the internal structure of a distribution box, its components, functions, and key types. Understand its role in electrical systems and safety.



Distribution Box: Key Functions, Components, and

Learn everything about the Distribution Box, its key components, and how to choose the right one. Explore our quality products and upgrade your



Everything About Distribution Boards

Everything About Distribution Boards - Uses, Types & Safety Tips Imagine it's a typical Indian summer. The temperatures are rising. You run the air



DB BOX(Electrical Distribution Box): Everything You

Learn everything you need to know about the Electrical Distribution Box (DB Box). Explore types, materials, installation tips, etc.



How to Install a Cable Distribution Box Safely and

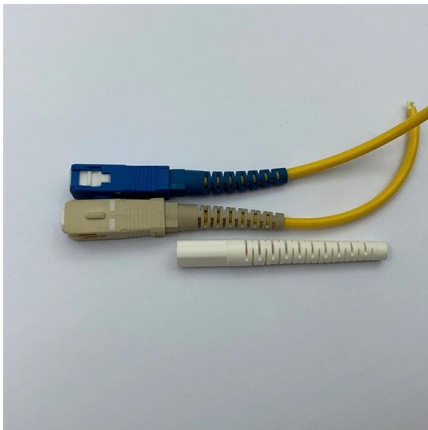
Understanding Cable Distribution Boxes A cable distribution box is an electrical device used to collect, distribute, and protect electrical power. It is





Understanding Distribution Boxes:A Comprehensive Guide

Understanding its significance, this article covers what a distribution box is, how it functions, its structure, the various types available, and how it

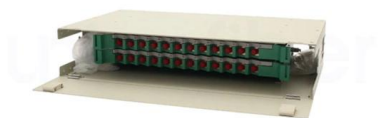
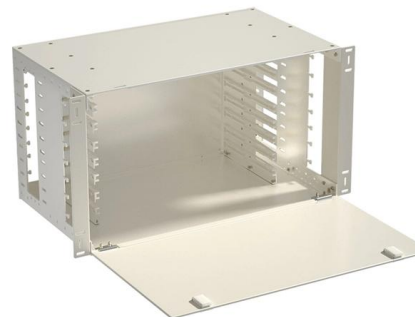


DB BOX (Electrical Distribution Box): Everything You

Conclusion Selecting the right Electrical Distribution Box is vital for ensuring the safety and efficiency of any electrical system. Whether your project

What is an Electrical Distribution Box? A

Discover everything you need to know about electrical distribution box! Learn about types, components, and how to choose.



The installation requirements for the distribution box

A distribution box is the heart of any electrical system. It takes the incoming power and safely distributes it to different circuits throughout your



What is the Function of a Distribution Box in Electrical Systems

Understand the function of the distribution box in electrical systems and how it ensures safe and efficient power distribution.



What Is an Electrical Distribution Box and Why Is It

An electrical distribution box distributes power safely, prevents overloads, and protects circuits, ensuring efficient and reliable electrical systems.



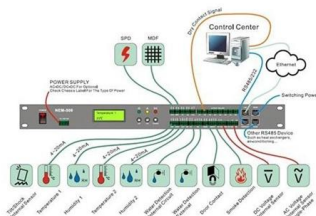
Understanding Distribution Boxes: A Comprehensive Guide

A distribution box is a vital piece of equipment that ensures the effective and safe distribution of electrical power in various parts within a building



Understanding Distribution Boxes: A Comprehensive Guide

Learn what a distribution box is, its types, and how to choose the right one for your project. Includes clear examples and expert tips.



Distribution Box Guide: Types, Components



& Solutions

Understand distribution boxes (DB boxes) in 5 minutes. Learn about types, components, functions, and uses. Find the perfect DB box for your needs.



Fire Safety for Facilities Management Personnel - Fire Prevention

Fire Safety for Facilities Management Personnel - Fire Prevention - Part 98 May 17, 2021 10:36 am Lawrence Webster Forrest (LWF) is a specialist fire engineering and fire risk

Distribution Boards

Distribution boards, often referred to as electrical panels or breaker boxes, serve as the nerve center of any electrical system. Here we explore the crucial parts of a distribution board and gain insights into



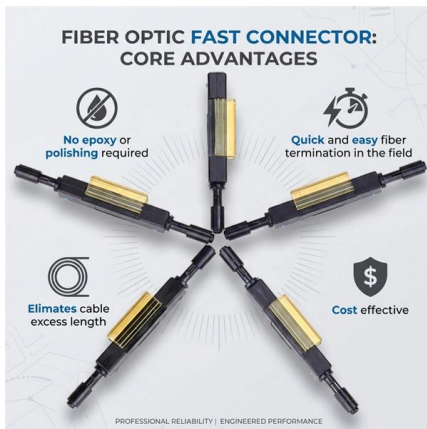
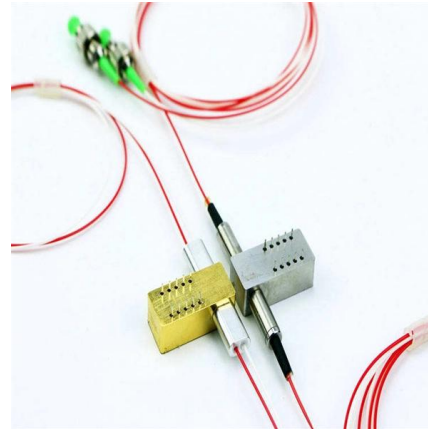
A comprehensive understanding of distribution box

? Introduction Distribution boxes are at the heart of safe and organized electrical systems--whether in residential, commercial, or industrial settings. But



Distribution Boxes Explained: Types, Functions, and

Learn about distribution boxes, their types, functions, and safety features to ensure efficient and secure electrical power distribution in any building.



What Is a Distribution Box?

In Conclusion Most residential and commercial electrical systems have at least one distribution box. A distribution box is a device that, as the name

Understanding Distribution Boxes: Your Guide to Power

What are Distribution Boxes and Their Importance? What are Distribution Boxes and Their Importance? Distribution boxes, or electrical junction



Distribution Boxes Types - The Complete Guide

Types of Distribution Boxes The electrical power distribution boxes are distribution boards or breaker panels. Meanwhile, it supplies current and can

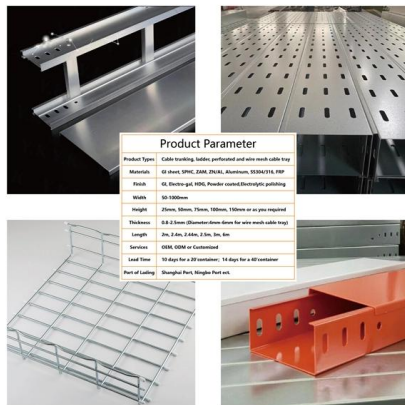


A Definitive Guide To Distribution Boxes

The distribution box acts as the center of power distribution, distributing electricity to all connected devices. A distribution box, also known as a distribution board, panel board, breaker



Length:52.0mm
 Small-end inner diameter:3.0mm
 Large-end inner diameter:4.8mm
 Outer diameter:6.5mm



Electrical Panel Box: Anatomy & How It Works , Penna

An electrical panel box or breaker box controls the entire electricity in your home, so it's important to know its components and how it works.

Understanding Distribution Boxes: Your Guide to Power

A: A junction box is primarily used to connect electrical wires, while a distribution box is designed to distribute power to various circuits. The distribution



Distribution Box Guide: Types, Components & Solutions

It acts as a protective enclosure that houses several key components, such as circuit breakers, fuses, and bus bars. These components work together





Contact Us

For datasheets, pricing, or custom high-speed optical interconnect solutions,
please visit:

<https://www.syropy.com.pl>