

Italian Explosion-proof Distribution Box Models and Specifications





Italian Explosion-proof Distribution Box Models and Specifications

A Technical Overview of Anti Explosion Distribution Box: Specifications

Anti-explosion distribution boxes are essential safety components in industries where flammable gases, vapors, dust, or volatile chemicals are present. Designed to contain internal sparks or arcs, these



Explosion-Proof Distribution Box BX53-III , Product Center

BX53-III Explosion-Proof Distribution Box, designed for hazardous environments, regulates power safely to avoid ignition risks.



BR-3 Explosion-Proof Distribution Box - Heatecx Limited

The BR-3 explosion-proof distribution box is a standard explosion-proof power distribution device specifically designed for electric heat tracing systems. It features a sturdy aluminum alloy enclosure,

DISTRIBUTION BOARDS

These are available in a range of materials including Stainless Steel, GRP & Sheet Steel from IP42 (Indoor) to IP 66 (Outdoor) Applications.



Ex Junction Boxes and Atex Enclosures - Atex Delvalle

Our explosion protection Ex enclosures and equipment are comprehensive and widely configurable. Reliable in use and convenient to install, their overall quality



JUNCTION BOXES Ex

Designed to meet the requirements for ON and OFF-SHORE use, in petrochemical and marine applications and for any other industry where an explosive



Explosion Proof Electrical Equipment , RIBCO s.r.l.

Cable glands, reducers, plugs, bends, terminal boxes, electrical equipment boxes, command and signal units, pushbutton and control stations, switches for hazardous area





Explosion-Proof Control & Distribution Boxes

The MAMX02/03 Series Explosion-Proof Control and Distribution Boxes are engineered to deliver advanced protection and long-term performance



Distribution Boxes and Empty Enclosures

Boxes and Empty Enclosures Distribution Boxes
BXM(D)S1 Series Explosion-proof Illumination
(Power) Distribution Boxes (Ex de IIB)

Factory Direct: Explosion Proof Anti-Corrosion Junction

BJX 220/380V 10-400A Explosion proof anti-corrosion junction box The shell of the explosion-proof control box is made of aluminum alloy, and the surface is high



Explosion-proof distribution board_Explosion-proof Distribution Box

5. Two or multi-circuits entry can be converted, by hand or automatically; 6. According to the electric scheme and main technical parameters offered by user, select explosion-proof electrical equipments



Control and Distribution Panels , Ex d , EJB Series

The enclosure series EJB forms the optimal basis for the application-specific configuration of terminal boxes, control stations as well as control and distribution



Explosion Proof Enclosures

Ex-Proof & Flameproof Junction Boxes & Enclosures Supermec ATEX Junction Box & Enclosures are designed to satisfy most of our clients' requirements for CONTROL explosion-proof and flameproof

Explosion Proof Electrical Equipment

Explosion Proof Electrical Equipment for Industrial Oil & Gas Fields COELBO designs and manufactures Explosion Proof Electrical Equipment for the



BM (D)X-Series Explosion Protected Distribution Box

BM (D)X-Series Explosion Protected Distribution Box Explosion protection -IECEx (IEC) -ATEX (CENELEC,EN) -China Ex (GB) Application in hazardous area



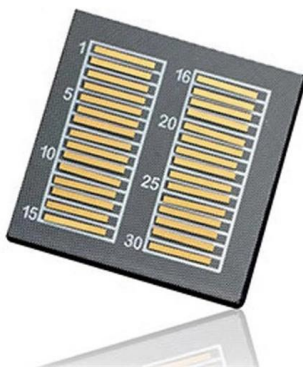
Explosion-proof illumination (power) distribution box (power)

3. Adopting the patented technology of the combined explosion-proof distribution box independently developed, the modular design and combination of the distribution box makes the whole distribution



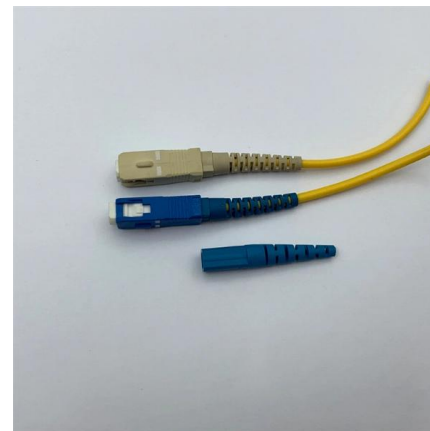
Explosion Proof Illumination Distribution Boxes (With

Flameproof and explosion proof, these power overhaul distribution boxes are suitable for use in hazardous areas. Specs: Ex mark: Ex de IIC T4 Gb DIP A21 TA,T4



Ex d Enclosure Series

The Ex d EJB series of enclosures is suitable for use in Gas Group IIB+H 2 for the protection of electrical and control-system solutions, such as energy distribution,



Explosion-Proof Electrical Distribution Boxes: Applications in

Explosion-proof electrical distribution boxes are essential for safety in hazardous environments. These specialized enclosures are built to contain internal explosions and stop the ignition of flammable





Terminal boxes , Junction boxes , Ex , Ex e , Ex d , ATEX , Explosion

We offer bespoke, custom-made terminal boxes and terminal box combinations, as well as standard products with short delivery times. Our products are certified for installation technologies all over the



Explosion Proof Distribution Box & Electrical Enclosures

Durable Hexlon Explosion Proof Distribution Boxes and Electrical Enclosures, IECEx and ATEX certified for Zone 1 and Zone 2.

Explosion proof Power Distribution Panel Box

Power Distribution panel box - Hazardous locations for explosive gas mixtures: Zone 1 and Zone 2. Explosive gas mixtures: Class IIA, IIB, and IIC.



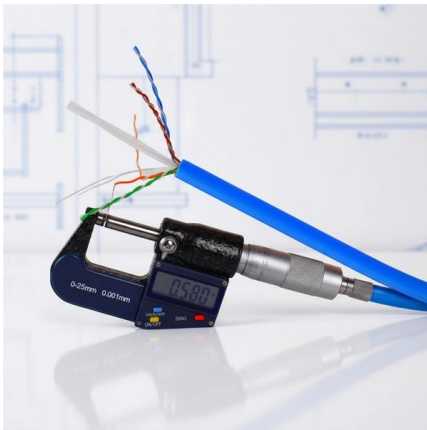
Explosion Proof Electrical Equipment , COELBO s.r.l.

Direct sales are constantly increasing in all five continents thanks to local distribution network with a permanent tracking of evolving international certification for a complete local compatibility.



unsupervised_topic_modeling/topics/en/17/100/100/topics at

Contribute to `annontopicmodel/unsupervised_topic_modeling` development by creating an account on GitHub.



Distribution Box Specifications And Models

Explosion-proof distribution box BXM (D) series: Suitable for explosive gas environments, with excellent explosion-proof performance, widely used in

Contact Us

For datasheets, pricing, or custom high-speed optical interconnect solutions, please visit:
<https://www.syropy.com.pl>