

# **Is the terminal box a switch device**





## Overview

---

A junction box, also known as a wire box or terminal box, is a closed container used to fix, protect and connect wires and cables. A device box is a protective enclosure used in electrical wiring systems to safely house and support switches, receptacles, and the required wire connections. These blocks help keep wiring clean, labeled, and easy to trace—making the whole. They play an important role in a variety of applications, including domestic, commercial and industrial settings.



## Is the terminal box a switch device

---

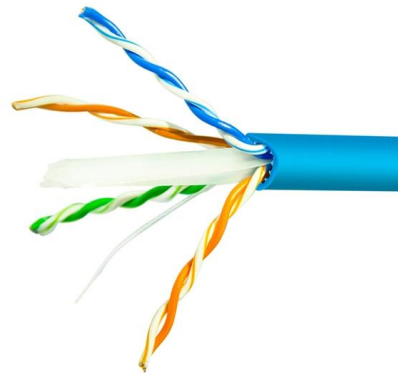


### Terminal vs Junction Box: Key Differences Explained

A terminal box is a structured wiring interface, often built around DIN rail hardware and terminal blocks. That difference affects installation speed, wire

### What are Terminal and Control Boxes? Key Features, Benefits, and

Discover the essential role of terminal and control boxes in electrical systems. Learn about their features, differences, and why they're critical for safe and efficient operations.



### What Is a Device Box and How Does It Work?

A device box is a protective enclosure used in electrical wiring systems to safely house and support switches, receptacles, and the required wire connections. This foundational component

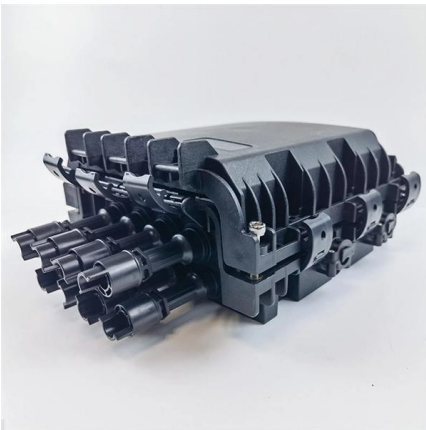
### Terminal boxes

Terminal boxes - simplicity with effectiveness  
When it comes down to it, terminal boxes are really just the simplest version of electrical cabinets. In some exceptional cases, however, they are also used



### Roblox Terminal Escape Room Answers - Chapters 1-5

If you've been looking for all Roblox Terminal Escape Room Answers from all five chapters as of February 2026, we've got you covered.



### Diode: Definition, Symbol, and Types of Diodes

A PN junction represents the basic form of a semiconductor diode, acting as a short circuit when forward biased and an open circuit when reverse



**03**  
**Easy installation**  
Meticulous workmanship  
Reasonable structure  
Stable performance

### what is a terminal box

A junction box, also known as a wire box or terminal box, is a closed container used to fix, protect and connect wires and cables. It is usually made of



## Terminal Box Vs Junction Box

What Is a Terminal Box? A terminal box is an enclosure used to neatly terminate and organize electrical wires. Inside the box, you'll find terminal



### Terminal and Junction Boxes Selection Guide: Types, Features

Description Terminal and junction boxes are used to house electrical components and facilitate wiring. Selection Considerations When selecting terminal or junction boxes, correct size and adequate

### What is the difference between a junction box, a distribution box, and a terminal box?

What is the difference between a junction box, a distribution box and a terminal box ? Junction box - where wires are spliced together or where conduits meet (wires



### Terminal Box vs. Junction Box: The Complete

Confused by Terminal Box vs. Junction Box? Discover key technical differences, NEC code requirements, and ROI analysis to select the right



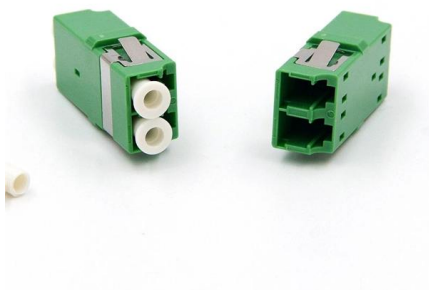
## How is Fiber Internet Installed? Everything You Need to

Explore how fiber optic internet is installed in your home, with step-by-step details on cables, ONTs, routers, and what to expect during the appointment.



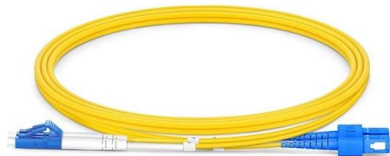
### Junction Box vs. Terminal Box: What's The Difference?

A terminal box offers safety as you can easily ground the wires nicely in the box. It comes with killer switches as well as finger connections for



### Terminal Box vs. Junction Box: Comprehensive

Terminal boxes Junction Box A jbox electrical is a device that keeps the connections of wires in a single place protecting them from damage. Wires



### Terminal Box vs. Junction Box: The Complete Engineering Guide (2026)

What Is a Terminal Box? A terminal box (often called a terminal enclosure or connection box) is a purpose-built enclosure designed to house electrical junction boxes with terminals.





### what is a terminal box

In electrical engineering, a junction box is a common device used to connect and manage wires, cables, and other electrical components. They play



### What are Terminal Boxes?

The last type of terminal box that we will discuss is the switch box, which is used to control the flow of electricity between two devices. These boxes also come in a variety of sizes and can be made from

### What is a terminal box

In electrical engineering, a junction box is a common device used to connect and manage wires, cables, and other electrical components. They play



### Choosing Between Terminal Box and Junction Box

A terminal box is an enclosure that is made to keep terminal blocks which are used to terminate and organize electrical wires. They are used in



## Terminal Box Vs Junction Box - The Ultimate Comparison

I know many people tend to confuse electrical terminal box and junction box. Well, this guide will help you understand what these two essential

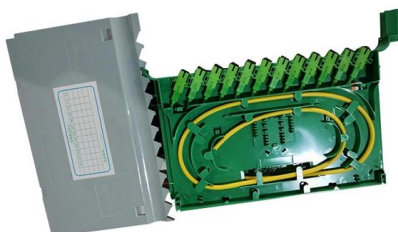
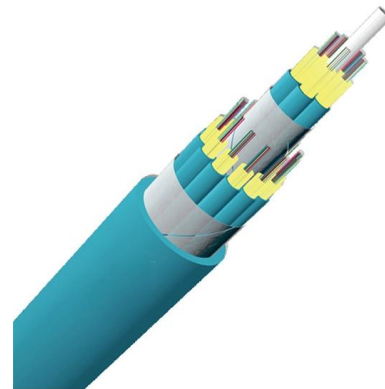


## Terminal Box Vs Junction Box

Understand the differences between terminal and junction boxes, including their uses, advantages, disadvantages, and selection criteria.

## Junction vs. Distribution vs. Terminal Box: The "Start,

Confused by junction, distribution, and terminal boxes? They often look identical, but their roles are totally different. Here is the simple "Start, Middle,



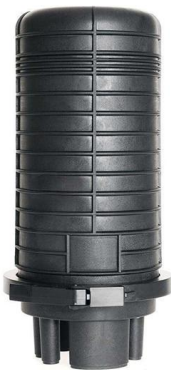
## How to Use FTP: A Step-by-Step Guide

Upload and download files using FTP on your PC or Mac While FTP isn't as common as it once was- most businesses and organizations now use SFTP for secure file transfer-many services (especially web hosting companies) still offer FTP access



## What does it mean if Windows isn't supported?

If you have devices running an unsupported version of Windows, we recommend upgrading them to a more current, in-service, and supported Windows release. If your devices don't meet the technical



## Software Downloads

Browse downloads by product and explore popular and new Ubiquiti applications.

## How to Wire a 3-Phase Electric Motor: A Diagram

The 3-phase motor wiring diagram at the top of this page shows the IEC terminal notation, Star and Delta schematics, and the physical terminal box layout side by side. Use it as a



## Junction Box vs. Terminal Box: What's The Difference?

A common question that is often asked is, "What is the difference between a junction box and a terminal-type box?" These terms are used



## Contact Us

---

For datasheets, pricing, or custom high-speed optical interconnect solutions, please visit:

<https://www.syropy.com.pl>