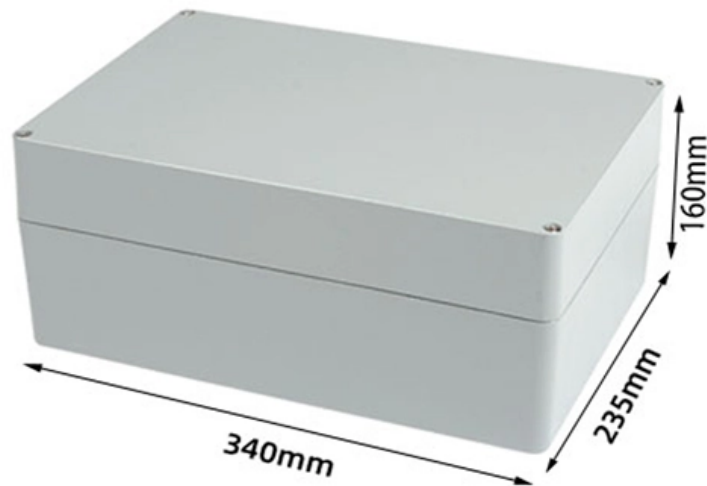


Is the optical distribution box an ONU





Overview

ONT and ONU both refer to the consumer end equipment in an optical fiber to the home (FTTH) communication link. A GEAPON system usually consists of an OLT (Optical Line Terminal) at the service provider's central office and multiple ONU (Optical Network Units) or ONT (Optical Network Terminals) close to the end user as optical splitters. In simple terms, it's a device that receives the optical signal from your Internet Service Provider (ISP) via a fiber optic cable and converts it into electrical signals that your router, computer, phone, and other devices can understand and use. Instead, the network relies on specific components such as OLT, ONU, ONT, and ODN to transmit data using optical signals. In contrast to AON, multiple customers are connected to a single transceiver by means of.



Is the optical distribution box an ONU



Eavesdropping via fiber-optic cables , Kaspersky official blog

The ISP manages the so-called Optical Distribution Network (ODN), to which end-users are connected. The device on the user's end is called an Optical Networking Unit (ONU).

OLT vs ONU vs ONT vs ODN: Fiber Optic Network

Optical Network Units (ONUs) are responsible for signal conversion between fiber lines and electrical lines. As you might imagine, these nodes sit between the OLT



Optical fiber distribution cabinet selection and installation guide

Optical fiber distribution cabinet, also known as Cable distribution cabinet box, is an upgraded version of the traditional ODF fiber distribution cabinet. It is mainly used for fiber

Understanding OLT, ONU, ONT and ODN in PON

ONU converts optical signals transmitted via fibers to electrical signals. These electrical signals are then sent to individual subscribers. In



12 core FC12 Type Fiber Terminal Box As distribution box

The Fiber Optic Terminal Box is a kind of optical fiber management products used to distribute and protect the optical fiber links in FTTH Network. It is available for the distribution and terminal



PON Network Components Overview: OLT, ONU, ONT,

ONU connections can be made using various methods and cable connections, including twisted-pair copper, coaxial cable, fiber optic, or wireless



24 Port Optical Distribution Frame ODF

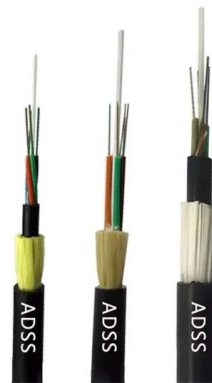
24 Port Optical Distribution Frame ODF, Excellent cost control, far exceeding the sales volume of peers, this is a product loved by customers.





Datasheet POR 48 Wall-mounted Optical Distribution Box

Wall mounted fiber optical box is designed for the placement of up to 48 optical connectors indoor. Optical cables can be lead in/out from upsite or downsite. Adapters plate is selectable and splicing

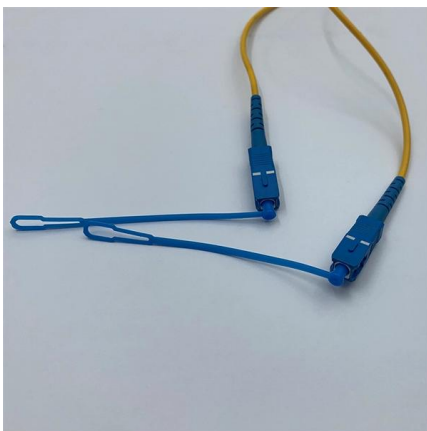
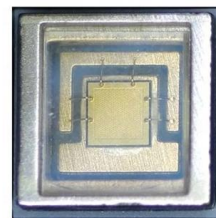


What is the Difference Between ONT & ONU?

An optical network terminal (ONT) and optical network unit (ONU) are essentially the same things. The difference is the physical location of the devices, but they

kyrgyzstan-customs-cost-fiber-optic-distribution-box-12-cores

All suppliers for kyrgyzstan-customs-cost-fiber-optic-distribution-box-12-cores
Manufacturer/Producer Find wholesalers and contact them directly B2B marketplace Find companies now!



Understanding the Difference Between ONT and ONU

ONU primarily operates at the network level, responsible for optical signal conversion and service processing between the access and aggregation

8 Port Fiber Distribution Box with Cable Gland,10 Cores



The 8 Port Fiber Distribution Box supports 2 cable entries (4-8 mm) and can house one 1x8 blockless splitter and 8 sc adapter for 8 cores termination and 10



What is ONU and Why Does It Matter for Your Internet

ONU stands for Optical Network Unit. In simple terms, it's a device that receives the optical signal from your Internet Service Provider (ISP) via a

What is an optical network terminal (ONT)?

What is an optical network terminal (ONT)? An optical network terminal (ONT) is a device that serves as the endpoint of an optical network,



PON Network: Understanding ODN,OLT, ONU OR

A PON system consists of optical line termination (OLT) at the communication provider's end and a number of optical network units (ONUs) at



kyrgyzstan-customs-cost-fiber-optic-distribution-box-12-cores

All Companies and suppliers for kyrgyzstan-custo ms-cost-fiber-optic-distribution-box-12-cores Find wholesalers and contact them directly Leading B2B marketplace Find companies now!

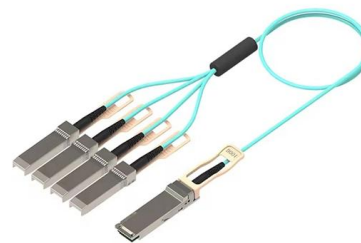


32 Port Fiber Distribution Box, 72 Cores Splicing -

The 32 port fiber splitter distribution box comes in three internal structure options, they all can achieve direct and branch connection of optical cable.

12 Fibers Rack Mounted Fiber Optic Terminal Box As distribution box

The Fiber Optic Terminal Box is a kind of optical fiber management products used to distribute and protect the optical fiber links in FTTH Network. It is available for the distribution and terminal



optical fiber distribution box FTTH Outdoor use 16F Access terminal box

About This Product Description: 16F FTTH Access terminal box Dimension; 385x245x130mm Protection Level: IP68-IP67 FTTH Outdoor Distribution Box Features Products Pictures our company



8 port Fiber Distribution Box

8 port Optical Fiber Distribution Box Indoor / Outdoor Wall Mounted comes with 2 fiber cable ports + 8 ports for drop ftth fiber optic cables. It can install 8pcs



10Pcs 2 Ports SC Fiber Optics Optical Termination Distribution

When you click on links to various merchants on this site and make a purchase, this can result in this site earning a commission. Affiliate programs and affiliations include, but are not limited to, the eBay

ODN Optical Distribution Network, ODN FTTH-Grandway

It is usually composed of ODF rack, optical fiber cable, optical joint closure (FOC), optical distribution cabinet (ODC, FDH), optical connector, optical splitter, fiber



Ftth box 24 ports cores ODP box fibra optica FTTH caja

24 Port Fiber Distribution Box with dual layer design separate the splicing working area. It greatly reduce the time for wiring management for field installer. The



What is OLT, ODN, ONU, and ONT in FTTH?

The ONU (Optical Network Unit) and ONT (Optical Network Terminal) are located at the user's end of the network. They convert optical signals from the fiber line into electrical signals that



24 core SC24 Type Fiber Terminal Box As distribution box

The Fiber Optic Terminal Box is a kind of optical fiber management products used to distribute and protect the optical fiber links in FTTH Network. It is available for the distribution and terminal

What are OLT, ONU, ONT and ODN in PON?

The OLT communicates with the optical network unit (ONU) or optical network terminal (ONT) at the user end, coordinating the distribution of data and ensuring that each connected user



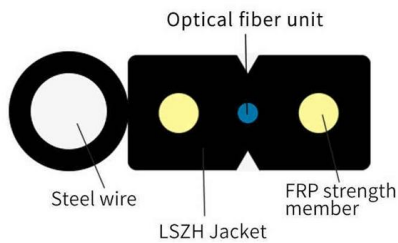
Decoding OLT, ONU, ONT, and ODN in PON Network

An ONU is a device that receives the optical signal from the OLT (through the ODN) and converts it back into an electrical signal. In some cases,



24 Port Outdoor Fiber Optic Distribution Box , AZE

AZE's Outdoor Fiber Optic Distribution Box is applicable in FTTH project and suitable for building's outer walls application; They can distribute cables after installing



Deco SFP+ Ports User Reference Guide

Fiber ISP optic distribution box----- (PON ONU Stick) Deco BE85 ***It is strongly advised to consult with the Fiber ISP first whether it is

72 Core Inline fiber Splice Closure and 16 Ports Optical

This 72 core inline fiber splice closure can be used as fiber optic distribution box that designed for optical splitting, fiber splicing, cable joint, termination and



Contact Us

For datasheets, pricing, or custom high-speed optical interconnect solutions, please visit:
<https://www.syropy.com.pl>