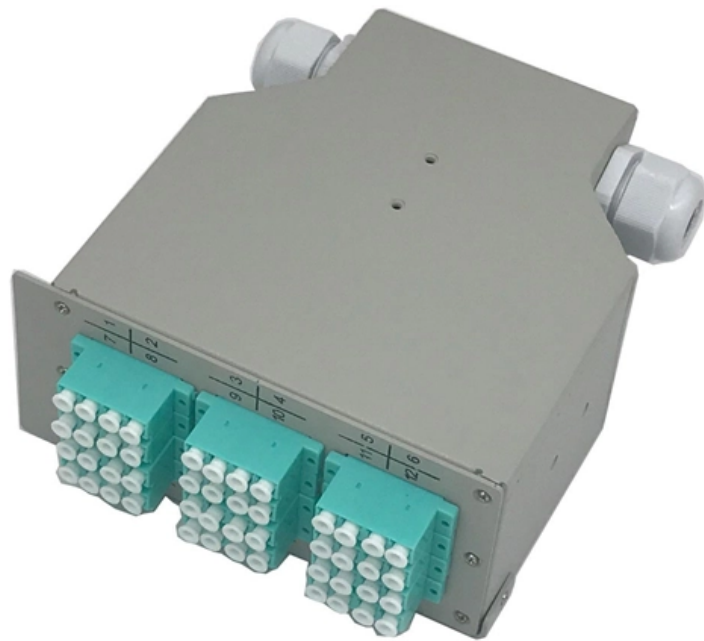


Is it okay to use a cable tray with a cable pull cage





Overview

Due to their exposure to the open air because of the cable trays, the wires contained within need a very durable outer covering. The regulations dictate that the cables must either be Type TC (also known as Tray Rated) or must be metal-armored (Type MC). This is a description of how to select, install, and support these metal or plastic frames, on which electrical wires are installed. Article Summary: A compliant cable tray installation requires a thorough understanding of NEC Article 392, proper structural support, and precise installation techniques.



Is it okay to use a cable tray with a cable pull cage



Installation Of Cable In Cable Trays: NEC, Safety

Cable tray layout must take into consideration the design limits of the cable. To minimize damage and verify integrity after installation, follow the practices

What is Cable Tray and How it is used in Industrial

What is Cable Tray? In electrical cabling, a cable tray is a metallic structure used to handle insulated electrical power distribution, control, and



Best Practice Guide to Cable Ladder and Cable Tray Systems

Any vertically orientated component, whether cable ladder, cable tray or support, acts structurally as a column; it is not usual to consider cable ladder or cable tray in this way because they are not

Essential Principles for Cable Tray Access Path Setup

Whether for installation or routine inspections, a well-designed cable tray access path not only enhances operational efficiency but also ensures safety



CABLE TRAY SYSTEMS GUIDE

Steel Ladder System Hubbell's NEXTFRAME® Ladder Tray is the effective and widely used cable runway that supports and delivers bundles of cable between cabinets, racks, and closets, along

Cable Tray Systems: Requirements and Best Practices

This article explains the main requirements and good practices for cable tray systems, including tray types, materials, loading, supports, bonding, cable selection, and installation details.



Cable Tray Technical Guide A practical guide to product selection and

In designing supports for a cable tray system, consideration should be given to the loads associated with future cable additions and any additional loading that may be applied to the cable tray system (e.g.,



Beama Best Practice Guide , Installation Of The Cable , Cable Tray

Cable tray or cable ladder should never be used as a walkway. The installation of cables shall meet the requirements of BS 7671 (The Wiring Regulations) or other national requirements as applicable.



Beama Best Practice Guide , Installation Of The Cable , Cable Tray

Preparation prior to installing cable in the tray or ladder, following wiring regulations, power cable pulling considerations, fastening and segregating cables and the use of expansion joints.

How to Manage Cables in Cable Trays: Principles and Methods

Learn how to manage cables in cable trays effectively with our comprehensive guide for cable classification, protection, and installation to ensure electrical system safety and efficiency.



Avoiding Mistakes in Instrumentation Cable Tray

Learn how to avoid common mistakes in instrumentation cable tray installation. Follow IEC standards and EPC best practices for safe, reliable



Cable Trays Pros & Cons: Do You Know How to Use

In this article, we'll give you the lowdown on cable trays, including what's to like and what's to loathe, as well as how to optimize your cable trays for



10 Things to Consider when Selecting a Cable Tray

Selecting a cable tray? Learn key factors like material, load capacity, and environment to choose the best cable management solution

What Is A Cable Tray? 5 Types Of Cable Trays

A cable tray is a structural system used to support and manage electrical cables in various settings, such as industrial, commercial, and residential environments.



Important design considerations for cable ladder and

Designers are unlikely to select or use a ladder or tray for a protective conductor, and therefore, it would not require earthing, but depending on the



Cable Tray Fill Rules (NEC 392)

Cable tray types, NEC fill limits, single-conductor vs multiconductor differences, ampacity derating, and when to use cable tray vs conduit.

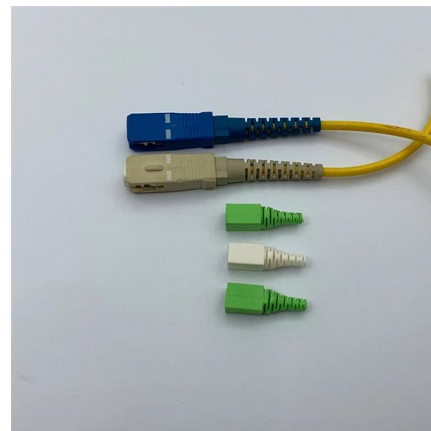


Cable tray vs cable basket vs cable ladder vs cable

This article will discuss the four most common types of cable containment and their uses: cable tray, cable basket, cable ladder, and cable

Cable Tray Technical Guide A practical guide to product selection and

SOLID-BOTTOM CABLE TRAY Providing additional cable protection, solid-bottom cable tray is sometimes preferred to support and protect numerous small instrumentation and control cables.



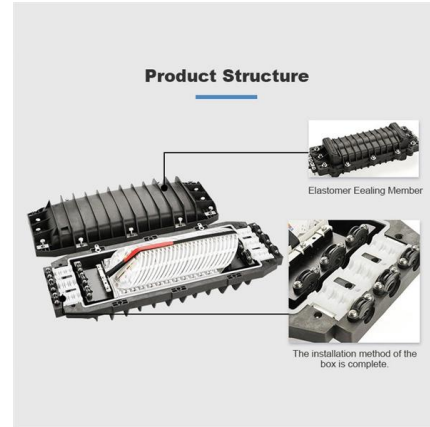
How to Avoid Damaging Cables During Cable Tray

Learn expert tips on how to avoid damaging cables during cable tray installation. Our guide covers planning, installation, and maintenance for cable



NEC Article 392 Guide: Ensuring Compliance for Cable

Can any cable be used in a tray? The short answer is no. Due to their exposure to the open air because of the cable trays, the wires contained within



What are Cable Trays & Different Types of Cable Trays

Learn what cable trays are & explore the various types, benefits, and purposes. Gain insights into how electrical cable trays can revolutionize your

Understanding Cable Tray Safety Hazards: A Detailed

Learn about common cable tray safety hazards and how to prevent risks such as cable damage, electrical short circuits, moisture intrusion, and more.



Explaining NEC Article 392 on Cable Trays

NEC Article 392 explains cable trays, their components, appropriate wiring methods for cable trays, and instances where they are and are not



Cable Tray Questions , Cable Tray Institute

NEC section 318-5 (e) indicates that multiconductor cables rated 600 volts or less are permitted in the same cable tray, however, separation of power and control cables is necessary as indicated in other



Cable Tray Questions , Cable Tray Institute

Question 1: Can mechanical utility piping or tubing containing water or compressed air be installed in cable trays with electrical cables?
Answer: No. Cable trays are a support system for electrical cables,

Cable Tray Installation Guidelines

This document provides guidelines for installing cable in cable trays, including: 1) Calculations for maximum allowable tensions on cables using pulling eyes/bolts



A Guide to Installing and Supporting Electrical Cable Trays

This guide covers the critical steps, from selecting the right electrical cable tray and performing accurate cable fill calculations to managing a safe cable pull through



Best Practice Guide to Cable Ladder and Cable Tray Systems

Cable ladder systems and cable tray systems are designed for use as supports for cables and not as enclosures giving full mechanical protection. They are not intended to be used as ladders, walk ways



Contact Us

For datasheets, pricing, or custom high-speed optical interconnect solutions, please visit:
<https://www.syropy.com.pl>