

# Is it normal for the fiber optic indicator light on the switch to stay constantly on





## Overview

---

Loss indicator: when the red light is on, the optical path is interrupted. What to check: Make sure the power cable is securely plugged into both the OLT and a working wall outlet. The lights on your OLT are typically LED indicators that display different colors and patterns to convey information about the device's status. The most common colors used are: The Power light is usually the first light to check when troubleshooting your OLT.



## Is it normal for the fiber optic indicator light on the switch to stay c

---



### How to Troubleshoot Fiber Optic Cabling

Fiber optic cabling has become so ubiquitous in the networking world thanks to its ability to transmit huge amounts of data at the speed of light. Thankfully, troubleshooting fiber optic cabling

### Fault summary of fiber optic transceivers

Fiber optic transceivers are essential components in modern network infrastructures, facilitating the conversion and transmission of data between



### What do the lights on the Openreach fibre modem mean?

Learn about what the lights on the Openreach fibre modem mean and what to do if they show that there's a problem.

### What to Do When the LOS Light Blinks Red and How to

The LOS light blinking red is a common yet solvable issue. By following the steps outlined above, you can identify the root cause, fix the



## Understanding Your Fibre ONT Lights

Learn what the lights on your Fibre ONT mean and how to troubleshoot common issues. This guide covers power, PON, LOS, LAN, and Wi-Fi lights to help you fix

## ONT lights and their meanings , Help Center

Fibre ONT devices and how they work.



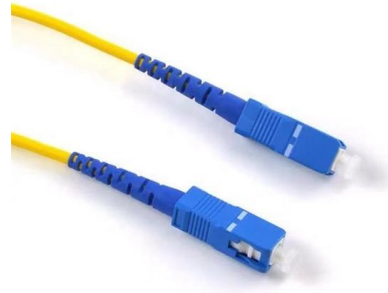
## What the LED lights mean

The tables in this article provide detailed information about the possible appearances of the LED lights on each device, the possible causes of each state, and what you should do.



## 7 Easy Methods to Fix the Red Light on Router

When the Internet light on your router is red, there is a problem with our internet connection that needs to be fixed as soon as possible.



### Fiber ONT Troubleshooting

Optical Network Terminal (ONT) troubleshooting guide: Tackling common glitches, step-by-step fixes, and preventive care for fiber-optic internet.

### What the LED lights mean

The tables in this article provide detailed information about the possible appearances of the LED lights on each device, the possible causes of each state, and what you should do. Ensure your Fiber Jack



### How to troubleshoot and solve fiber optic transceivers?

The use of fiber optic transceivers is very simple. When applying fiber optic transceivers to the network, if they cannot work normally, troubleshooting is required. The following six aspects



## Fiber Uplink Issue?

Hi all, just today started having some network issues. Two buildings connected via a 15 year old fiber connection, Cisco 3750G on one end and Cisco 3560 on the other. The switches are 7



## Fix Fiber Jack Connection Issues

Fix Fiber Jack Connection Issues Your Fiber Jack is the small device that connects your home to the Gfiber network. If your internet isn't working, the lights on your Fiber Jack can help you figure out

## Decoding the Verizon ONT Lights: A Comprehensive Guide

A steady green light indicates a stable connection, while a red or blinking light may indicate a problem with the fiber-optic connection, such as a faulty fiber-optic cable or a issue with



## Fix Fiber Issues Fast: Your Ultimate HomeLinkd Guide

Explore our comprehensive guide on Troubleshooting your Fiber Connection, addressing common issues for improved internet performance.



## Decoding the Lights on Your ONT: A Comprehensive Guide

The Optical Network Terminal (ONT) is a crucial device in modern telecommunications, serving as the interface between your home network and the fiber-optic internet connection provided



## The Ultimate Fiber Troubleshooting Bible for Beginners

Solve fiber troubleshooting issues fast with step-by-step tips for beginners. Keep your fiber optic network reliable and fix common internet

## LED Indicators on a Fiber Router: What Do They Mean?

LOS (Loss Of Signal) Normal: OFF. If ON or blinking red: There is a physical fiber disconnection or cut, dirty connector, broken patch cord, or no signal from the provider.



## The meaning of fiber media converters indicator and

It is inevitable that the fiber media converters will malfunction during use. we will talk about the meaning of the normal indicator of the fiber media converter and what it



## What Do the Lights on My Fiber Equipment Mean?

Not sure what the lights on your fiber equipment mean? This guide explains each status light and how to troubleshoot common issues.

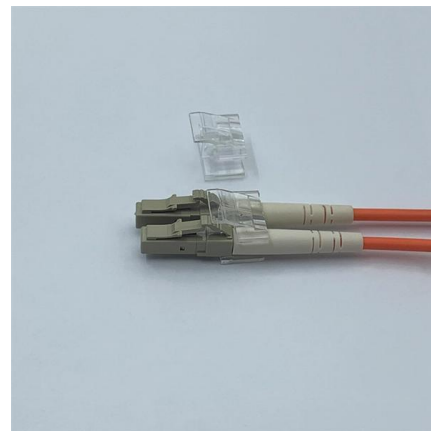


### Common faults of fiber optic transceivers

Transceiver light is off Solution: Generally, the AC and DC power transformers are faulty. Use the DC voltage range of the multimeter to measure whether the output voltage of the AC-DC

### Decoding the Lights on Your ONT: A Comprehensive Guide

If the internet light on your ONT is flashing, it could mean that the device is trying to establish a connection to the fiber-optic network. This is usually a normal part of the startup process,



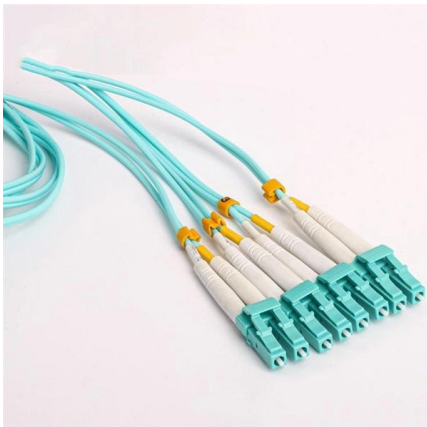
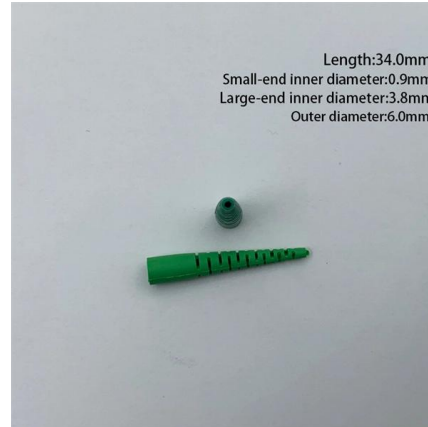
### AshwinD24's gists · GitHub

GitHub Gist: star and fork AshwinD24's gists by creating an account on GitHub.



### Which lights does the fiber-optic cat normally light? Normal state and

Power on indicates that the optical fiber cat is normally powered on (otherwise, if it is not on, it means that the optical fiber cat does not supply power. Check the power supply port and try changing a

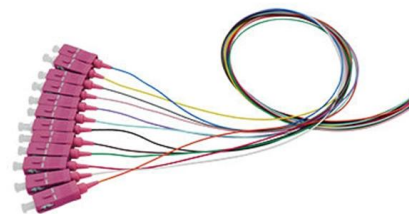


### What do light mean on my ONT (box on the wall)

If none of your devices can connect to the Internet, check the lights on the box on the wall, know as the ONT

### My Optical Light is flashing, has gone off or has gone red

If you find that the Optical/Config/PON Light on your Fibre ONT (Optical Network Terminal) box is flashing, has gone off, or has gone red, this indicates there may be an issue with the



### Why Your Modem and Router Lights Are Blinking

Learn what all those lights on your modem and router actually mean and how you can use them.



## Understanding the lights on an Openreach FTTP

This guide is designed to offer an explanation of the lights seen on the most common Full-Fibre (FTTP) modems fitted by Openreach - sometimes called an ONT. For



## Fiber Optic Troubleshooting: Expert Guide for Common

Fiber optic troubleshooting is an essential skill for network administrators, technicians, and engineers responsible for maintaining and

## Understanding the lights on an Openreach FTTP

Check that the white fibre optic cable is fully connected to the ONT and is not damaged. Turn off the ONT for 10 minutes, then back on again. Allow up to 5



## Contact Us

---

For datasheets, pricing, or custom high-speed optical interconnect solutions, please visit:  
<https://www.syropy.com.pl>