

Is it necessary for a distribution box to have so many circuits





Overview

Home distribution boxes typically handle single-phase power supplies and contain 6 to 24 circuits. They include standard circuit breakers for lighting, outlets, and major appliances like water heaters and air conditioning units. It helps organize, protect, and control electrical connections in residential, commercial, and industrial electrical systems. You lower the chance of circuits getting too hot or overloaded when you pick the right box for your needs.



Is it necessary for a distribution box to have so many circuits

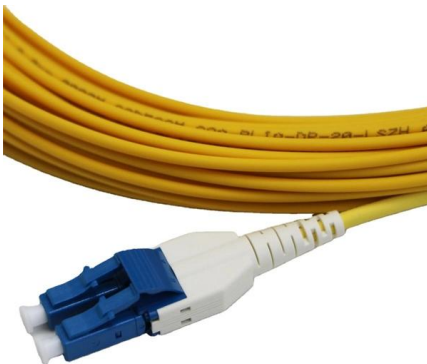


Distribution Boxes Explained: Types, Functions, and

A distribution box is essential for safely managing and controlling electrical circuits. It provides overload protection and ensures electricity is

What Is an Electrical Distribution Box and Why Is It

An electrical distribution box distributes power safely, prevents overloads, and protects circuits, ensuring efficient and reliable electrical systems.



Understanding Distribution Boxes: Your Guide to Power

What are Distribution Boxes and Their Importance? What are Distribution Boxes and Their Importance? Distribution boxes, or electrical junction

What is the Internal Structure of The Distribution Box

A distribution box is a key part of electrical systems in buildings. It helps control and distribute electricity to different areas. Inside, you'll find parts



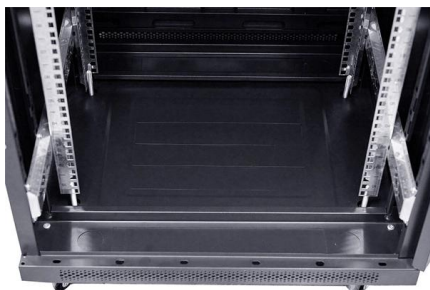
A Definitive Guide To Distribution Boxes

Power distribution boxes are beneficial because they eliminate the requirement for each output device to be connected directly to the power source. As a result, there's no reason to utilize



Understanding Distribution Boxes:A Comprehensive Guide

A distribution box, also known as a distribution panel or board, is a cabinet that holds electrical parts used to supply power to multiple circuits within



How to Choose a House Distribution Box , CHINT global

An optimal distribution box configuration ensures efficient power management and safety. The recommended configuration is: 1 Main Switch:



The Importance of Distribution Boxes in Electrical Systems

As electrical demands in a building increase over time, it may be necessary to upgrade the distribution box to accommodate additional circuits or



Understanding Distribution Boxes: Your Guide to Power

Distribution boxes, or electrical junction boxes as they are sometimes called, play a vital role in electrical systems. They act as the central location

Understanding Distribution Boxes: A Comprehensive Guide

A distribution box is used to receive electrical power from a main supply and distribute it to multiple branch circuits in a safe and controlled way. It helps protect circuits, organize electrical



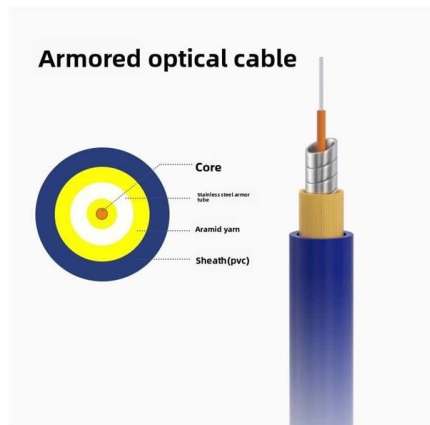
What Is A Distribution Board and How Does It Work? , TOSUNlux

Do you wonder how electric power is distributed in different parts of your home? Well, a distribution board or distribution box helps to do that! As the name goes, it is the load center and



The Complete Guide to Distribution Box: Installation, Types & More

Circuit additions are possible if the distribution box has adequate capacity and available spaces. However, you must ensure the total load doesn't exceed the box's rating and that all



What Is an Electrical Distribution Box? A Complete Guide

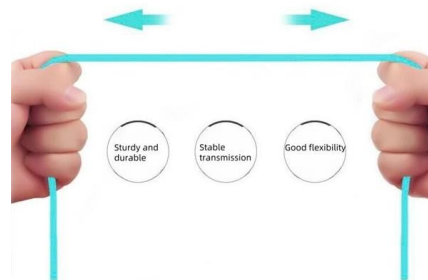
An electrical distribution box is a centralized unit responsible for distributing electrical power across multiple circuits within various environments, including residential,

How to Calculate the Size and Number of Circuits for a Distribution Box

Planning Your Circuits: More Than Just Math
You're not just calculating numbers--you're designing a system that matches how you live .
Kitchen Strategy: Avoid plugging your fridge and toaster oven

More durable and robust

The outer layer is made of environmentally friendly PVC, which is soft and elastic. It can be stretched without damage , so you can use it with confidence.



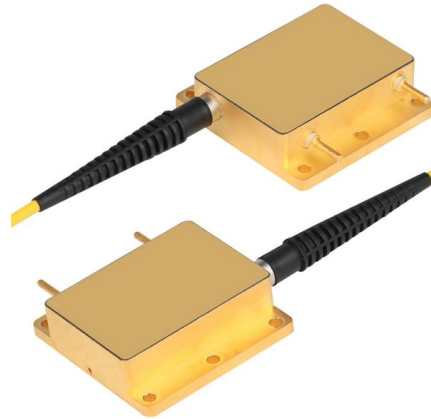
Distribution Boards

Distribution boards, often referred to as electrical panels or breaker boxes, serve as the nerve center of any electrical system. Here we explore the crucial parts of a distribution board and gain insights into



Size configuration of multiple circuit breakers in the

Choose the right size and setup for multiple circuit breakers in your distribution box to ensure safety, code compliance, and room for future upgrades.



Multiple Circuits in One Box: A Comprehensive Guide to

When working with electrical systems, understanding how multiple circuits can coexist in one box is crucial for safety and functionality.



Comprehensive Understanding of Distribution Box

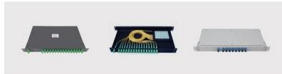
A distribution box is important for handling your electricity. It works as the main center, sending power to different circuits. Its flexible design lets you add more as power needs increase. Smart systems



Optical splitter cassette type refers to the port 2.0 mm / 3.0mm slip-on fiber multichannel direct output with a plastic box packaging protection and easy to use.



Optical splitter rack mount type is using metal box packaging which can be installed in 19" frame or cabinet.



Optical splitter IEC box type is made by flame retardant material box or plate packaging. Mainly suitable for cable ports fiber box and wall-mounted terminal box.



Optical splitter mini type refers to the port 0.9 mm slip-on fiber multichannel direct output with a compact design and easy to use.



How a Distribution Board Works and Why It Matters

A distribution board, or db box, is like the heart of your electrical system. It sends power from the main source to different circuits in your house or workplace. It



How Does a Power Distribution Box Work

Learn how a power distribution box works step by step--from incoming power to circuit protection and smart monitoring--for safe, efficient electricity delivery.



Understanding Distribution Boxes: A Comprehensive Guide

Distribution box working Keep in mind that each circuit will have its own circuit breaker or fuse. This restricts electrical power flow to any individual

Distribution box

Expanding an existing distribution box is a common scenario, whether it's by adding a new circuit for the garage, connecting a wallbox for an electric car or integrating modern home technology. Particular



What is the function of a distribution box?

Inside, the power is split into multiple, smaller circuits that run to different areas--like the kitchen, bedrooms, lighting, and air conditioning. This prevents overloading a single wire and allows



What Is a Distribution Box?

Some distribution boxes have a longer cord than others. When choosing a distribution box, make sure the cord is long enough to reach the main



The Ultimate Guide to Distribution Box Types

Discover the key types of distribution boxes with NUOMAK's comprehensive guide. Learn about Main Distribution Boards (MDB), Consumer Units, Transfer

What is an Electrical Distribution Box? A

Prevents Overloads: When too many devices run on the same circuit, there's a risk of overheating, which can cause fires. The distribution box helps



Contact Us

For datasheets, pricing, or custom high-speed optical interconnect solutions, please visit:
<https://www.syropy.com.pl>