

Is it good to pair a switch with a fiber optic transceiver





Overview

Network switches play a crucial role in connecting devices within a network, enabling seamless communication and data transfer.



Is it good to pair a switch with a fiber optic transceiver

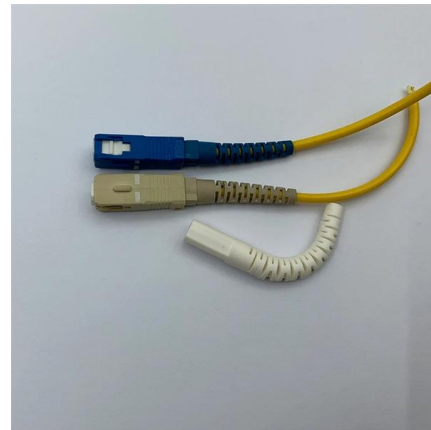


How to Connect Multiple Ethernet Switches Using Fiber Optic Cables

In addition, fiber cables can transmit data over several kilometers without signal degradation, making them ideal for connecting switches in large campus networks and between

Ultimate Guide to SFP+ Transceiver Modules Updated

SFP+ transceiver modules are an advanced iteration of the Small Form-factor Pluggable (SFP) interfaces designed to support faster data rates and



FS Community

Hier sollte eine Beschreibung angezeigt werden, diese Seite lässt dies jedoch nicht zu.

Those who use fiber to connect switches together what do you use

I buy FS generic modules and recode as needed using the FiberBox. That being said, except for some older Aruba switches I have laying around that require specifically coded SFPs, typically I'd always



How Are Network Switch Connect To Fiber

Learn how network switches connect to fiber optics for fast and reliable data transmission. Understand the benefits and considerations of this



Connect Optical Transceivers of Different Brands, Fibers

Optical transceivers usually work coordinately on a pair of network switches. As switch is responsible for directing the flow of data, optical transceiver



How to Connect Multiple Ethernet Switches Using Fiber

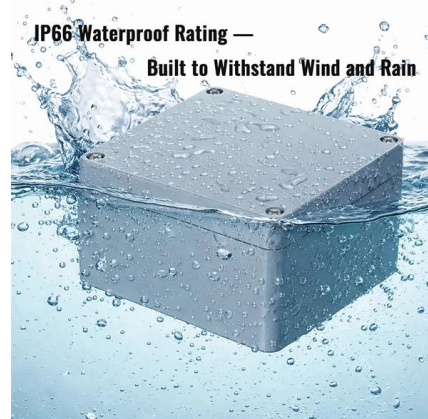
Most importantly, any upgrades and advancements in networking technology can be easily accommodated by existing fiber infrastructure, offering





Comprehensive Guide to Optical Transceiver Interoperability and

Discover the essential guide to optical transceiver interoperability and compatibility. Learn how to ensure seamless network connectivity, avoid vendor lock-in, and optimize your fiber optic



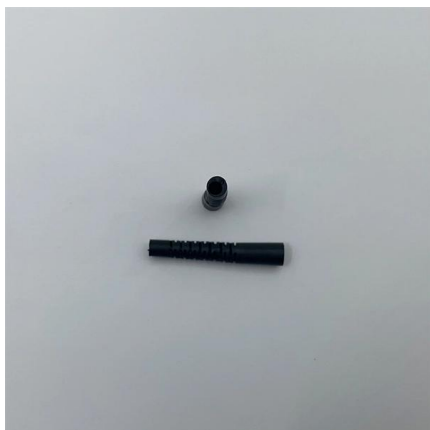
Fiber Optic Transceivers Tutorial on Correct Selection

Choosing the appropriate transceivers for your network is a critical task. Our expert guide simplifies the process, ensuring you optimize network



Troubleshooting Fiber Optic Connections: Ensuring Proper TX and RX

One of the most common problems in fiber optic networks is the misalignment of the transmit (TX) and receive (RX) pairs. This article will guide you through the process of



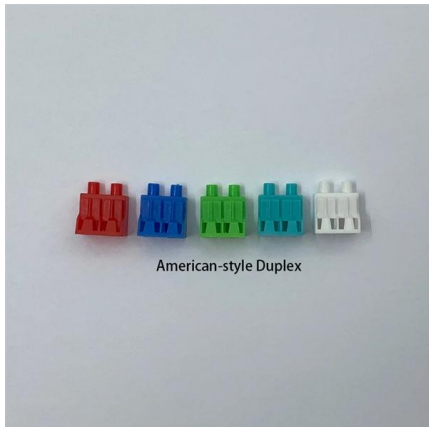
How Fiber Optical Transceivers Operate and Compatibility

For a successful connection between two fiber optic transceivers, consider these four key factors: wavelength, speed, fiber type, and switch



How Do You Connect a Fiber Optic Switch? , Networking - Sivo

Ensure it's securely connected. Connect the fiber optic cable: Attach the fiber optic cable's connector to the transceiver module on the switch. Make sure the connector type (e.g., SC, LC)

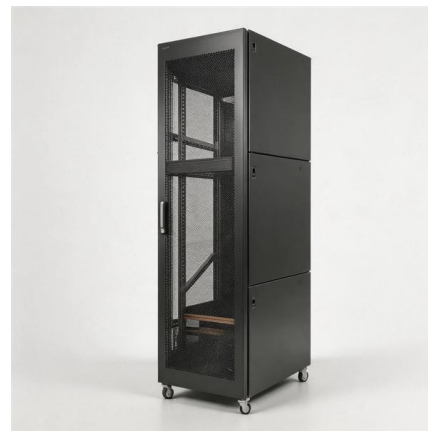


How to Choose the Right Optical Transceiver in 2025

Learn how to select the right optical transceiver for your switch or router. Compare SFP, SFP+, QSFP28, Cisco SFPs, and Huawei modules with

Installing 10 Gigabit SFP transceivers & fiber optic links between

This is a simple video showing how to install a 850nm fiber optic link using SFP transceivers between 2 10 Gigabit backbone switches. Covers transceiver installation, switch setup and link



Connecting Network Switches via Fiber

SFP transceiver modules are specific to the type of fiber being connected (either single mode or multimode). Choose an SFP module based on the fiber optic



Recommended Way to Connect Fiber Optic Line to an

To connect your fiber optic line to an Ethernet-only network switch, you need a fiber optic-to-Ethernet converter box.

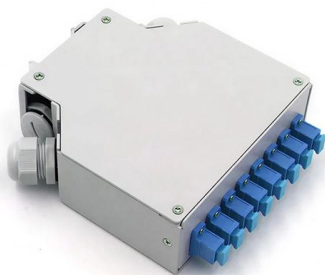


Crackhead/pass.txt at master · moimikey/Crackhead ·

How to create a web form cracker in under 15 minutes. - moimikey/Crackhead

The ULTIMATE Guide to Fiber Optic Home Networking

Do you have a need to extend your home network around your property? Maybe you want reliable internet in the shed you turned into a work



Optical Transceiver Types: Use Cases, Compatibility & Buying Tips

Explore optical transceiver types, real-world use cases, and expert buying tips to help you choose the right SFP, QSFP, or AOC/DAC.



Fiber Optics Demystified: How To Choose a

When upgrading fiber optic hardware, whether transceivers, direct attach cables or active optical cables, patch cables, media converters, or



Application Guide: Connecting Fiber-ready Network

Always integrate duplex (two strand) fiber optic cabling or higher strand counts. Most modern SFP transceiver modules feature duplex LC connections. Terminate your

How to connect a new optic fibre to an ethernet switch

As we speak I just have optic fibre (Community Fibre) connected to my Huawei modem / Linksys Velop which will be connected to a new POE switch (need to identify the best model to be



How To Use A Fiber Optic Media Converter In Your

When A Single Fiber Optic Media Converter Is The Right Choice To connect copper cabling to a fiber device, a single media converter is occasionally



How do you connect a switch to fibre?

This guide will walk you through the process of connecting a switch to a fiber optic network, covering the necessary components, steps, and considerations to



How to connect a new optic fibre to an ethernet switch

If you want to use fibre then buy a switch with 2 SFP ports for the house and switches with at least one sfp port for the remote buildings. At these distances, it doesn't really matter what

How Do You Connect a Fiber Optic Switch? , Networking - Sivo

Connecting a fiber optic switch involves several steps, ensuring compatibility between the switch's ports and the fiber optic cable. The process requires understanding the type of fiber optic



3 FAQs of Connecting Switches by Fiber Optical Ports

Can two switches with optical ports be directly connected by optical fiber? Yes, the main line of the optical fiber LAN is a direct switch, followed by a



Extending Ethernet Networks with Fiber Optics -

Written by Don Schultz, trueCABLE Senior Technical Advisor, Fluke Networks Copper/Fiber CCTT, BICSI INST1, INSTC, INSTF Certified If you have



Contact Us

For datasheets, pricing, or custom high-speed optical interconnect solutions, please visit:
<https://www.syropy.com.pl>