

# **Is a cable management rack always required for a patch panel**





## Is a cable management rack always required for a patch panel

---



### What is Patch Panel & what is the purpose of Patch

What are Patch Panels? Patch panels are effective and flexible networking devices that connect various IT devices. Used within IP-networks,

### Patch Panels: Pros, Cons, and Best Practices for

Discover the pros and cons of patch panels, their applications in data centers and enterprises, and how to choose the right one for optimized network management.



### Cable Manager vs. Patch Panel: Simplify Cable Organization

Choosing between a cable management system and a patch panel doesn't need to be confusing. Each tool has its place, and using both can make your setup better, cleaner, and easier to

### A Comprehensive Guide to Effective Cable

Learn from experts with decades of experience about installing and managing patch panels and switches effectively in data centers. An ultimate



### **Cable Plant Basics: Master Network Management**

Mastering Network Management: The Essential Guide to Patch Panels Cable Plant Basics: Master Network Management - ITU Online Learn



### **Networking Patch Panel Wiki, Types, and Purposes**

Under such a circumstance, the patch panel for networking will do help to effectively manage those cumbersome cables. Then, a



### **Cable Manager vs Patch Panel: Organize Cables in**

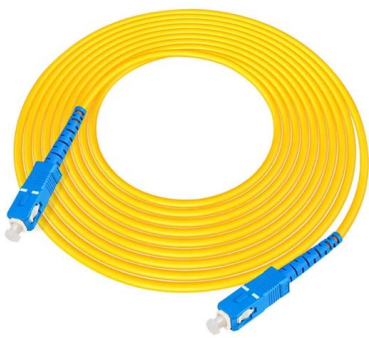
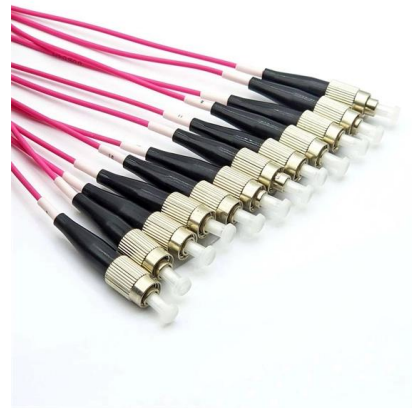
A cable manager is mainly used to organize, secure, and protect cables. It helps keep cables untangled, ensures a clear path for them, and





## Cable Manager vs Patch Panel: Simplify Cable

Discover the difference between a cable manager and a patch panel, their roles in cable management, and how they aid to keep your network



### Difference between cable managers and patch panels

Literally speaking, a cable management rack is a support structure for organizing cables and is typically used in conjunction with a patch panel.

### The Role of Patch Panels in Modern Networks

Patch panels are hardware components that serve as a connection point for network cables, allowing for the efficient management of network infrastructure. They are typically mounted in



- ✓ 100KWH/215KWH
- ✓ LIQUID/AIR COOLING
- ✓ IP54/IP55
- ✓ BATTERY 6000 CYCLES

### Cable Management for Small LAN with 24-Port Patch

This guide explains how to use a 24-port patch panel to manage copper and fiber cabling in a small LAN, how to choose between different patch



## What is a Patch Panel Used for and How Does it Work?

A modern cable network consists of many components that require a high level of organization. A patch panel is one of the rack mount wire



## Cable Manager vs Patch Panel: Simplify Cable

Organizing cables using cable managers and patch panels is a requirement for network reliability, scalability, and easy maintenance. Choosing

## Cable Manager vs Patch Panel: Organize Cables in

Many people may wonder if it's necessary to use cable managers and patch panels together. The answer is yes. As mentioned earlier, these two



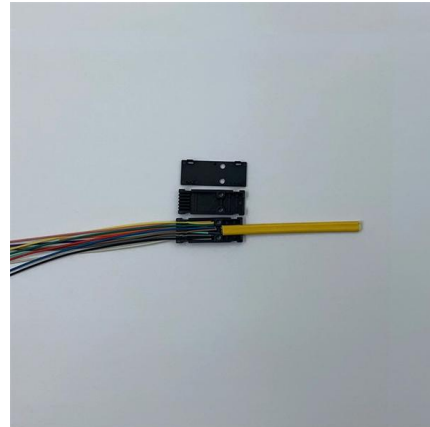
## Build a Reliable Ethernet Patch Panel System , Server

The golden rule: Every cable entering the server rack lands on a patch panel before it gets to the switch.



### How to Install a Rack Mount Patch Panel?

Sharing the same blood with a patch panel, patch panel rack version is also a mounted hardware assembly containing ports to connect and manage



### A Guide to Patch Panels

Patch Panels are a standard rack panel punched with ports for network connectors featuring ID strips/labels to help with identification. Many

### Structured Cabling Patch Panel Setup Guide for Your

A disorganized data center rack full of tangled network cable runs is a direct liability to your network's stability. When cables used for connectivity are a



### What is a Patch Panel and Why You Need It?

Patch Panel Cable Management System With dozens, or even hundreds, of cables coming into and out of a patch panel, it can be easy for



## Patch Panels: A Complete Guide

Patch panels are one of the best ways to manage an expansive local area network (LAN) by providing quick and easy access to the ports and



### Patch Panel Wire Management for IT Teams

Patch panels should be logically placed within network racks, ideally near

### How does a patch panel work?

Discover how a patch panel works, its role in network cable management, and how to optimize your infrastructure.



### Guidelines for Data Center Rack Cable Management

For a good cable management of data center rack, it cannot do without suitable cable managing devices. Basically, there are three major types of cable



## A Guide to Patch Panel Cable Management - VCELINK

Using patch panels is essential for efficient cable management in small or large-scale network installation. Use the right patch panel for your network need.



### Patch Panels: What They Do and Why You Need One

Patch Panel: What it is and why your data center needs it Your data center is only as reliable as its weakest link. You could have the best infrastructure and technology

### Structured Cabling Patch Panel Setup Guide for Your

Our guide delivers actionable, step-by-step best practices for rack layout, cable management, and patch panel installation. Following these steps



### Patch Panels Explained: Types, Benefits, and How They Work

Learn what a patch panel is, how it works, and why it's essential for modern structured cabling--improving cable management, scalability, and network performance.



## Server Rack Patch Panel : Essential Guide for Home

What Is a Server Rack Patch Panel? If you've ever found yourself wrestling with a jungle of Ethernet cables behind your server rack, you're not alone. That's where



### What Is a Patch Panel? And Why It's Essential in

What Is a Patch Panel? Think of a patch panel as the backbone of your wired network. It's a flat, rack-mounted hardware unit that houses multiple cable

### Patch Panel Cable Management: Stop Losing Hours to Cable Chaos

Poor patch panel cable management doesn't just make racks look messy -- it silently drains operational budgets through extended MTTR (Mean Time To Repair), thermal inefficiency,



## Contact Us

---

For datasheets, pricing, or custom high-speed optical interconnect solutions, please visit:  
<https://www.syropy.com.pl>