

Is a beam splitter mandatory





Overview

A beam splitter or beamsplitter is an optical device that splits a beam of light into a transmitted and a reflected beam. It is a crucial part of many optical experimental and measurement systems, such as interferometers, also finding widespread application in fibre optic telecommunications. For beam splitters with two incoming beams, using a classical, lossless beam splitter with E_a and E_b each incident at one of the inputs, the two output fields E_c and E_d are linearly related to the inputs thro.



Is a beam splitter mandatory

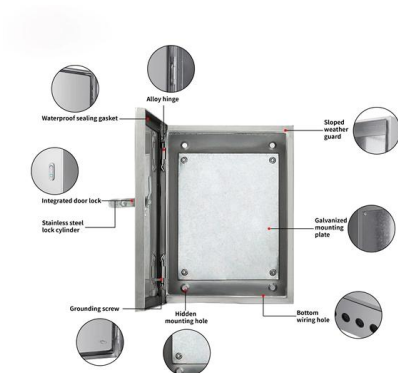


Covering the Basics of Beamsplitters -- Firebird Optics

What are Beamsplitters? Beamsplitters (also known as beam splitters or power splitters) are an optical component used to split an incident beam of

Photonics 101

As the name suggests, a beam splitter refers to an optical device which is used to split or divide a beam of light into two. A beam splitter is usually the cornerstone of most interferometers.



How Do Optical Beam Splitters Work & Applications

In laser applications, multiple laser beam paths emerge from single beam distribution through use of diffractive beam splitters. The functionality is

Beam Splitter

A conventional beam splitter is an optical component used to divide an incident beam into two or more beams by refracting or reflecting it. In contrast, artificial nanostructures of metasurfaces provide



What are Beamsplitters?

Beamsplitters are generally effective at reflecting s-polarization but they are not as effective at preventing p-polarization from reflecting. This occurs because when s



Beam Splitters: Types, Applications, and Selection

Metasurface-based beam splitters are highly efficient, compact, and can operate over a wide range of wavelengths. They have the potential to replace



Precision Beamsplitters & Quad-Channel Imaging

A beam splitter (or beamsplitter) is an optical component used to split incident light into two separate beams, typically based on wavelength or polarity. This precise



How Does a Beam Splitter Work?

A beam splitter is an optical device that divides a single incoming beam of light into two or more separate beams. Its fundamental purpose is to precisely control the path and intensity of light,

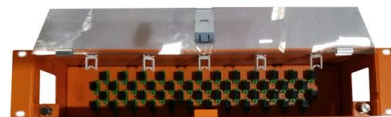


Beam Splitters: Explained

Beam splitters are a fundamental element in optical systems. Beam splitters are, in essence, optical components used to divide a single light source

Beam splitter , Description, Example & Application

A beam splitter is an optical device that splits a single beam of light into two or more beams. It is commonly used in scientific and industrial applications.



Understanding Beamsplitters: Types, Principles, and

A beamsplitter is an optical device capable of splitting an incident light beam into two. These tools can split both laser and regular light. A beamsplitter



Beam Splitter

Holography requires that two beams interfere at the plate. This is usually accomplished with a beam splitter. Reflective Beamsplitters A reflective beam splitter is a partially silvered mirror. It can be

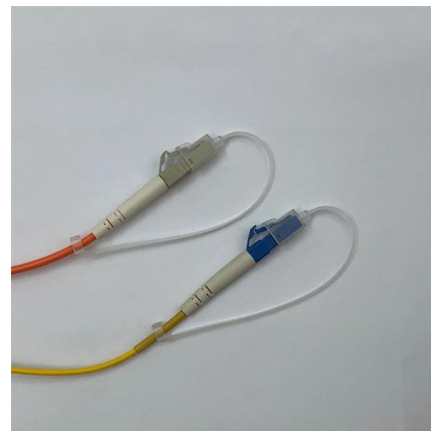


2991: Beamsplitters

Astronomy News: The International Astronomical Union has finally banned beamsplitters, optical devices used by scientists to embezzle light from

What is a Beam Splitter: Types And Applications

A beam splitter is a device used to separate or combine light. It is widely used in guiding light in optical systems, enhancing imaging and



What is a Beam Splitter?

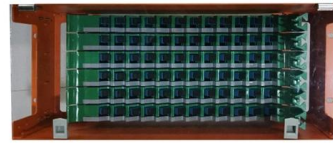
There are different types of beam splitters; the most important are plate and cube beam splitters as shown in the figure below. Beam splitters are required for various interferometers,

What Are Optical Beamsplitters? , Plate,



Cube & Dichroic Types

In Summary Optical beam splitters are versatile devices, typically made of glass, used in separating or combining light beams. These optical components play a major role in the science and tech industry.

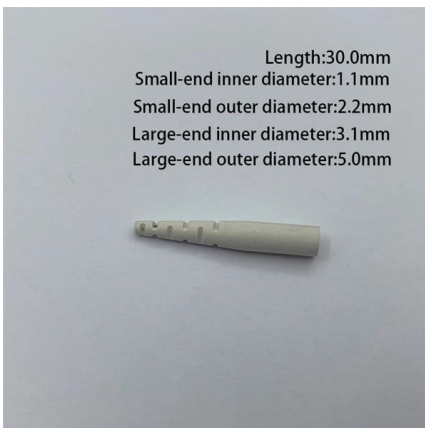


Understanding Beamsplitters: Types, Principles, and

As mentioned previously, beamsplitters can split incoming light into many streams. The splitting process is contingent on the incoming light's

Beam Splitter , Precision, Applications & Design Principles

Explore the precision, applications, and design principles of beam splitters, essential for advancements in scientific research and technology.



beam splitter help please (novice question) : r/Optics

Okay on to the question. I am looking for a beam splitter with the following properties: Polarising, so that one path is for p polarised light, and the other path for s polarised. As little attenuation as possible



Beamsplitters

Beam splitter cubes are commonly used in various optical instruments and applications, including microscopy, spectroscopy, and laser systems. Other



What is a Beamsplitter?

A simple beam splitter consists of a square or rectangular glass sheet that is coated with a reflective material, while a complex system can be an

Physics:Beam splitter

A beam splitter or beamsplitter is an optical device that splits a beam of light into a transmitted and a reflected beam. It is a crucial part of many optical experimental and measurement



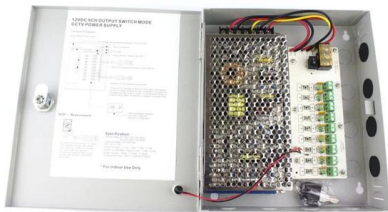
Beam Splitters - optical power splitter, beamsplitter, thin-film

They are used for very different purposes. For example, beam splitters are required for various interferometers, autocorrelators, photo cameras, projectors and laser systems. The wide range of



Beam splitters

Beam splitters The SPIE Digital Library offers a wide range of resources on beam splitters, focusing on their design, applications, and performance across various optical systems. The library includes

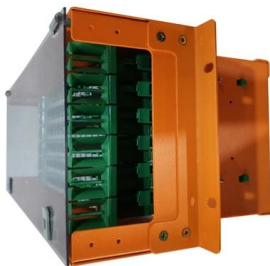


What Is a Beam Splitter and How Does It Work?

Pellicle Beam Splitter The Pellicle Beam Splitter uses an extremely thin membrane of optical film stretched over a frame. Because the film is only a few micrometers thick, this design

Beam Splitters

The spectral range for neutral beam splitters can be tailored to specific requirements. While the range between 450 nm and 650 nm is common, beam splitters for the UV and IR ranges can also be



What is a Beam Splitter, and What are Its Functions and

In the intricate realm of optics, a beam splitter stands as a fundamental and versatile optical component. It plays a pivotal role in



Beam Splitter

The beam-splitter directs a second beam of light to the sample where it is reflected. The two beams of light return to the beam-splitter and are combined forming an image of the measured surface



Contact Us

For datasheets, pricing, or custom high-speed optical interconnect solutions, please visit:
<https://www.syropy.com.pl>