

Inverse Time Relay Protection Verification

LoRa handheld portable base station





Inverse Time Relay Protection Verification



Operation, maintenance, and field test procedures for

Plant protection system functional testing
Protective circuit functional testing, including lockout relay testing, must take place immediately upon

Adaptive fault identification for multi-level relays using fault tree

This paper proposes an AFI method for multi-level relays using fault tree and user-defined inverse-time characteristics equation, which can dynamically adapt to topology changes.



C37.112-2018

The inverse-time characteristics of overcurrent relays are defined in this standard. Operating equations and allowances are provided in the standard. The standard defines an integral

EXPERIMENTAL VERIFICATION OF INVERSE TIME

This research paper is focused at the study and implementation of various protection relays and schemes in LabVIEW software for a small power system.



doi: 10.1007/978-3-319-20919-7_3

Verify by simulation that the relays operate as expected. Model malfunctioning of the protective equipment and verify operation of the back-up protection functions. Springer International Publishing



Inverse Time Overcurrent Relay Analysis

This document discusses inverse time overcurrent relaying for protection of three-phase transmission lines. It explains that overcurrent relays are used to protect



Introduction to Protection Relays 1

A fundamental aspect of understanding and effectively utilizing protection relays involves grasping the concept of Time Current Characteristic



Cable structure

INVERSE DEFINITE OVERCURRENT RELAY DISCRIMINATION



Inverse definite minimum time overcurrent relay coordination using Computer Aided Protection Engineering. In Power Engineering and Optimization Conference (PEOCO), 2010 4th International,



Protection Relay Testing and Commissioning

The testing and verification of protection devices and arrangements introduces a number of issues. This happens because the main function of protection devices is related to operation under fault



Inverse time lag relays in protection

I'm dealing now with the different types of time responses of electromechanical relays: instantaneous, definite time lag, inverse time lag, and inverse definite minimum time lag. My question is: What's the



Inverse Time Over Current (TOC/IDMT) relay trip time calculator.

PDF file

Distribution Automation Handbook - ABB

In these cases, the use of inverse time relays in favor of definite time relays can usually speed up the operating time of the protection at high fault current magnitudes. Time grading with fuses is





also

Inverse time over-current (ANSI 51)

The controller uses this equation from IEC 60255-151 to calculate the time that the current measurement may be over the set point before the inverse time over-current alarm is activated:



Inverse Time Overcurrent Relay Analysis

Inverse time relays have an operating time that varies inversely with fault current, meaning higher currents yield faster operation. The paper aims to model and

Understanding Relay Timing Mechanisms:

This lecture explores the key concepts and operational principles of three essential relay types used in electrical protection systems:
Instantaneous



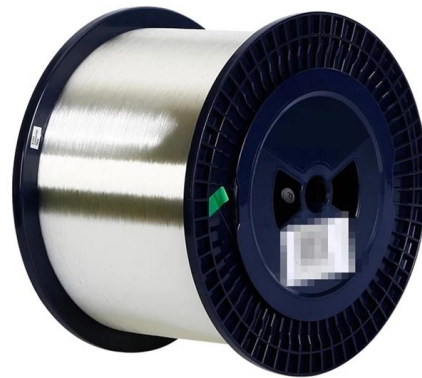
Adaptive Inverse-Time Elements Take Microprocessor-Based

The dynamically configurable inverse-time element presented in this paper provides relay adaptability without disabling the relay and is suitable for multiple applications without the need for



The Basics Of Overcurrent Protection

The basic element in overcurrent protection is an overcurrent relay. The ANSI device number is 50 for an instantaneous overcurrent (IOC) or a



Protective relay

An inverse-time over-current (ITOC) relay is an overcurrent relay which operates only when the magnitude of their operating current is inversely proportional to the



Types of over current protection and their working and

Over current relay has 6 types of categories as Instantaneous, Definite time, IDMT- Inverse definite minimum time, Inverse time, Very inverse time and Extreme inverse



Inverse Time Overcurrent Relays and Curves Explained



The characteristics of overcurrent relays are based on operating times typically governed by a time vs. current curve. There are three main types of

IEC Standard Inverse Time Overcurrent Protection

IEC Standard Inverse Time Overcurrent Protection Explained Inverse Time Overcurrent Protection, as defined by the International Electrotechnical



Practical Challenges of Inverse and Definite-Time Overcurrent

The characteristics of an overcurrent relay in protection coordination are determined by adjusting the current and time delay function. This characteristic is adjusted once, fixed, and

Protective Relay Protection Element Tests

2/62 Timing Relay Functions to give a desired amount of time delay before or after any point of operation in a switching sequence or protective relay system. Serves in conjunction with the





Difference between instantaneous, definite time and

When electromechanical relays were still used, inverse time relays, definite time relays, and instantaneous relays were separate relays. Modern

The fundamentals of protection relay co-ordination and

Among the various possible methods used to achieve correct relay co-ordination are those using either time or overcurrent, or a combination of both.



The Relay Testing Handbook: Principles and Practice

Chapter 2: Introduction to Protective Relays
What are Protective Relays? Time Coordination Curves (TCC) and Coordination

Analyzing Standardized Inverse Time-Current Curve Types of

The selection of the appropriate curve type of overcurrent relay function is significant for achieving optimal coordination of overcurrent protection in distrib





IEEE Standard for Inverse-Time Characteristics Equations for

Abstract: The inverse-time characteristics of overcurrent relays are defined in this standard. Operating equations and allowances are provided in the standard.

Contact Us

For datasheets, pricing, or custom high-speed optical interconnect solutions, please visit:
<https://www.syropy.com.pl>