

Introduction to Huawei All-Optical Switches





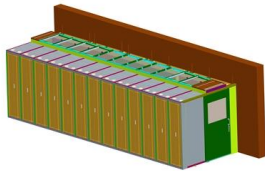
Overview

CloudEngine S5736-S series all-optical GE access switches are developed based on next-generation high-performing hardware and the Huawei Versatile Routing Platform (VRP), support enhanced Layer 3 features simplified operations and maintenance (O&M), flexible Ethernet. All-optical Ethernet switches are a type of switch that provides optical uplink and downlink ports, making them an ideal choice for building an all-optical campus network. They can function as core, aggregation, and access devices on campus networks and connect to upstream and downstream devices. How to Configure Optical Ports on Huawei S5720-32P-EI-AC Switch?

Problem: All optical ports cannot be.



Introduction to Huawei All-Optical Switches

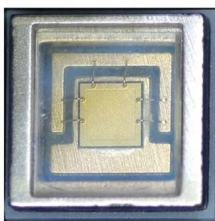


Huawei Advances All-Optical Connectivity via New

At the 8th Huawei Optical Innovation Forum this week, Huawei released a new all-optical target network architecture that delivers optical, latency-free performance

Introduction of Optical Modules on Huawei Switches

Introduction of Optical Modules on Huawei Switches On an optical network, a sender needs to convert electrical signals into optical signals before sending them to a



Intelligent OptiX Network , OptiX , All-Optical Networking

Huawei's intelligent OptiX network strategy aims to build intelligent, simplified, ultra-broadband, and ubiquitous next generation all-optical networks.

CloudEngine S5736-S Series Switches , Huawei Enterprise

CloudEngine S5736-S series switches are all-optical switches that feature 48 downlink optical ports and four uplink 10 GE ports. Learn more.



What Is an All-Optical Ethernet Switch?

This is where Huawei's all-optical Ethernet switches come in. An all-optical Ethernet switch provides both optical uplink and downlink ports, and uses optical fibers that feature high



What Is an All-Optical Ethernet Switch? Why Do We Need It?

All-optical Ethernet switches help you out! ? Core advantages: - 10GE to terminals: optical ports in both uplink and downlink directions - Direct fiber connection: no bandwidth limits of



Campus Switches

CloudEngine S5332-H Series Switches
CloudEngine S5332-H series switches are brand-new enhanced gigabit access switches that provide all-GE optical downlink





Future All-optical Network Architecture and Key Technologies

New Solutions Future All-optical Network Architecture and Key Technologies Evolving towards the 2030 optical communications network system and architecture is a key issue facing the optical

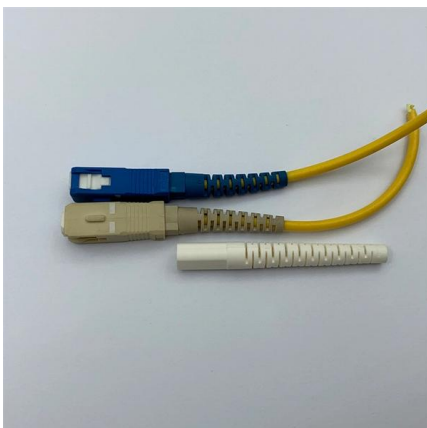


Installing Optical Module Tutorial For HUAWEI Switch

Module installation is an important factor affecting the service life of switches and modules. In the installation process, be sure to follow the installation steps

Huawei's Data Center All-Optical Switch Wins the Special Prize at

At Interop Tokyo 2025, the largest ICT exhibition in Japan, Huawei's DC-OXC Photon-Electronics Integration DCN in the AI Era (Data center all-optical switch - Huawei OptiXtrans DC808) won the



Optical Module Solutions for Huawei S5700/S5720 Series Switches

This article summarizes several solutions for using optical modules with switches and common problems encountered during usage, along with specific solutions.



All-Optical Ethernet Switch

An all-optical Ethernet switch provides both optical uplink and downlink ports, and uses optical fibers that feature high transmission speed, large bandwidth, and strong anti-interference capability.

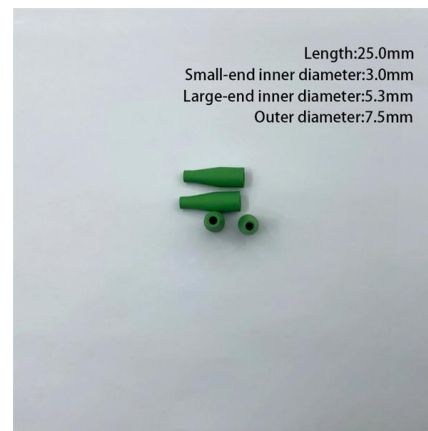


Optical fiber: the foundation of smart cities

And of all the connectivity methods available, optical fiber is the most environmentally friendly. Huawei's industry-leading solutions make it easier to

Fully optical networks explained

Fully optical networks explained (June 2022) This short explainer video describes the benefits of fully-optical networks and the technologies involved: Fiber optics, AirPON, Optical Cross-Connects (OXC) The media could not be loaded, either because the server or network failed or because the format is not supported.



Network Switches , Huawei Enterprise

Huawei Ethernet Switches Turbocharge your enterprise network with high-performance, high-availability for resilient services and simplified management.



All Products and Solutions

Directory of Huawei enterprise IT infrastructure products, solutions, and services.



Huawei's Data Center All-Optical Switch Wins the Special Prize at

At Interop Tokyo 2025, the largest ICT exhibition in Japan, Huawei's DC-OXC Photon-Electronics Integration DCN in the AI Era (Data center all-optical switch - Huawei OptiXtrans DC808)



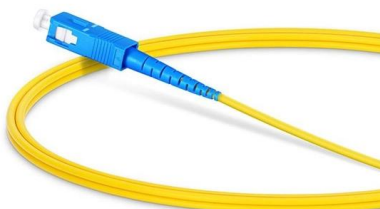
Data Center Network

This calls for future-proof, energy-efficient, and highly-reliable networks. Huawei has introduced all-optical cross-connect (OXC) to DCNs, launching cutting-edge DC



Huawei All-Optical Network Overview

It accelerates new infrastructure construction and facilitates carbon neutrality with a simple, intelligent, two-layer active to passive optical network that reduces costs





Data Center Network

Huawei has introduced all-optical cross-connect (OXC) to DCNs, launching cutting-edge DC Optical Switch to create a next-generation intelligent computing DCN



Introduction of Optical Modules on Huawei Switches

If an optical module is installed in a running switch, you can run the display transceiver command to view parameters of the optical module, including the

No Fiber, No AI: All-Optical Networks Accelerate Industries

Huawei has released the DC-OXC all-optical switches with the particular aim of addressing these bottlenecks. Positioned for data centers, they are designed with ultra-dense ports and ultra-low



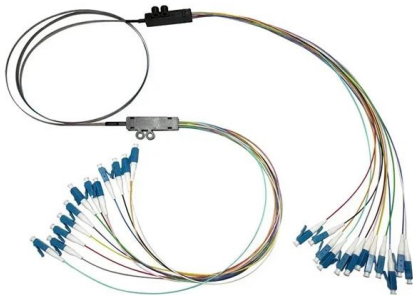
Striding Towards the Intelligent World White Paper: All-Optical Network

Towards an Intelligent World 2023--All-Optical Network 17 Matching the cloud-network strategy, build all-optical transmission capacity networks, upgrade the single- wavelength rate and optical spectrum



All-Optical Network

FTTR provides an all-optical base for digital home services with additional revenues. Using the C-WAN architecture to create a unified network, operators can extend FTTR connectivity to whole-house



Huawei XFP-10G-1550NM-80KM-SM Optical Module Sample Report

Huawei has model XFP-10G-1550NM-80KM-SM optical module products, which can support 10G Ethernet transmission of 80KM in single-mode fiber, Moduletek Laboratory has tested

CloudEngine S5736-S Series All-Optical Switches

Huawei switches support both cloud management and on-premise management modes. These two management modes can be flexibly switched as required to achieve smooth evolution while



Contact Us

For datasheets, pricing, or custom high-speed optical interconnect solutions, please visit:

<https://www.syropy.com.pl>