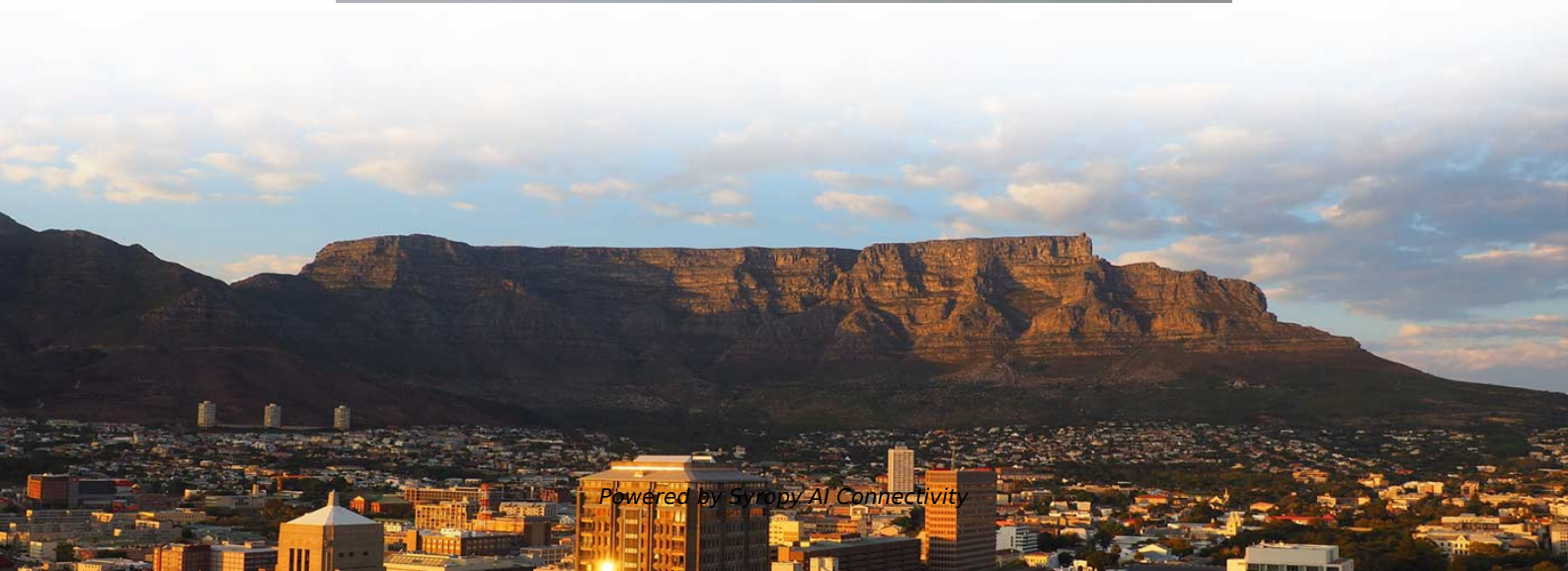


Introduction to Busbar Cable Tray Switchgear





Overview

Busbars are conductors in switchgear that collect, distribute, and transmit electrical energy. They connect the power source (such as the output terminal of a transformer) to various branches (such as the incoming terminals of circuit breakers), acting as a transfer station for. Busbar systems are often preferred over cables because they save space, install faster, offer greater flexibility for changes, and provide enhanced reliability, frequently leading to a lower total cost of ownership. Busway Installation is the process of hanging and connecting busway throughout a commercial or industrial facility. Electrical busbar systems (sometimes simply referred to as busbar systems) are a modular approach to electrical wiring, where instead of a standard cable wiring to every single electrical device, the electrical devices are mounted onto an adapter which is directly fitted to a current carrying.



Introduction to Busbar Cable Tray Switchgear



Busbar

The use of busbar for switchgear goes back to the dawn of electricity generation and is very common in both residential load centers of 200A and less and in industrial motor control center (MCC)

Busbar vs Cable Tray: Power Distribution Explained

Discover key differences between busbars and cable trays in electrical systems. Fuspan offers IEC-certified, export-ready busbar solutions for industrial use.



Advantages of Busbar Trunking system

Busbar trunking system, electric power is distributed using copper or aluminum busbars protected by suitable enclosures & protection to prevent cable

Busway and Cable Tray Installation

Cable Tray Installation is the process of installing a structural system to securely fasten and support cables and raceways. It involves calculating angles and bends as well as measuring and cutting



Busbar

In the past, many switchgear installations using busbar required bending, drilling, and tapping of the copper bus. With newer standardized modular busbar systems there is no need to bend, drill, tap, or



414 Huijue Busbar Cable Tray Prices jobs in United States

Today's top 414 Huijue Busbar Cable Tray Prices jobs in United States. Leverage your professional network, and get hired. New Huijue Busbar Cable Tray Prices jobs added daily.



Busbar Design Standards for MV Switchgear

Avoid certification failures and costly redesigns. This guide compares IEC, ANSI, and GB busbar standards with real



Low-voltage switchgear Installation, handling MNS Light W and

Handling and unpacking 3
Setting up switchgear cubicles 4
Laying of external cables 7
Connection of circuit-breaker cubicle and disconnector cubicle 8
Connection of busbar trunking system 12



What Is a Busbar: Types, Applications, & Simulation

What Is a Busbar? A busbar is a metallic strip or bar commonly found inside switchgear, panel boards, and busway enclosures. It serves a crucial role

Cable Bus , Cable support , Busway

It offers an ideal hybrid solution between cable tray and busway, delivering superior cable support and isolation for high-power transmission and a highly



What Is a Bus Bar in Electrical Engineering? Full Guide

What Is a Bus Bar in Electrical Systems? A bus bar (also spelled busbar) is a metallic strip or bar used in electrical power distribution to conduct electricity



Busway and Cable Tray Installation

Busway (also known as bus duct) is a raceway consisting of metal enclosures containing factory mounted, bare, or insulated conductors. These conductors are usually copper or aluminum bars,

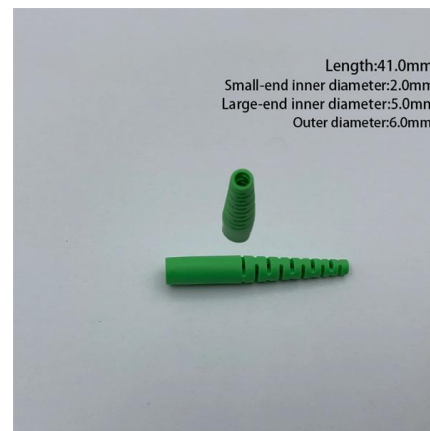


What is the function of the busbar in a switchgear, and

Busbars are conductors in switchgear that collect, distribute, and transmit electrical energy. They connect the power source (such as the output terminal of a

What Is a Busbar: Types, Applications, & Simulation

A busbar is a metallic strip or bar commonly found inside switchgear, panel boards, and busway enclosures. It serves a crucial role in local high-current

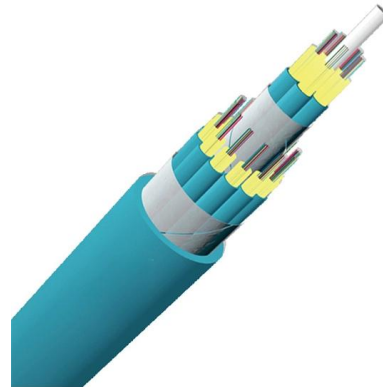


Busbar and Cable Channels - Barla Energy

Cable Trays Cable Trays: General Information What is a Cable Tray? Cable trays are robust support systems designed to protect and organize power and communication cables. They shield cables

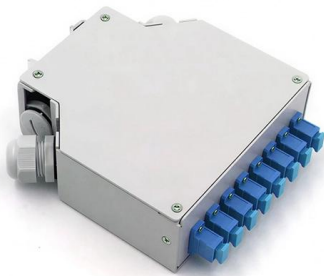


In electric power distribution, a busbar (also bus bar) is a metallic strip or bar, typically housed inside switchgear, panel boards, and busway enclosures for



Busbar Presentation2.pdf

It covers topics such as busbar material selection criteria, sizing calculations, installation practices, and good practices for bending, punching holes, making



From Breakers to Busbars: Understanding Major

What are the major components of a modern switchboard? Find everything you need to know from bus bars to circuit breakers.



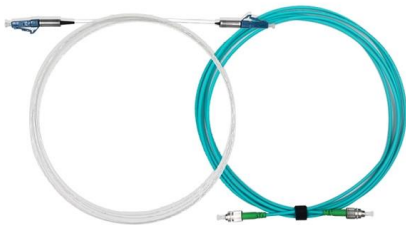
Busbars and Connectors in HV and EHV installations

In other words, Busbar is a junction where the incoming and outgoing feeders current meets i.e. it collects the power at single point. Busbars for Outdoors Installations



Electrical busbar system

Electrical busbar systems (sometimes simply referred to as busbar systems) are a modular approach to electrical wiring, where instead of a standard cable wiring to

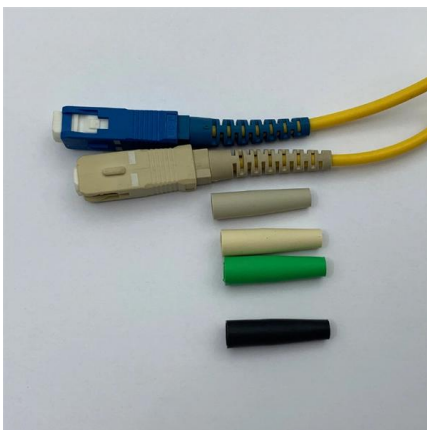
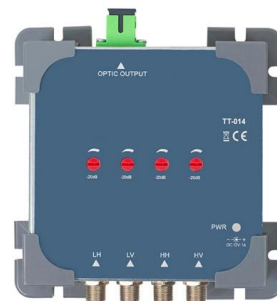


Cable Tray and Busway in Electrical Systems

Explore the essential role of cable tray and busway in modern electrical systems for efficient power distribution, system flexibility, and safety.

Why I prefer busbar trunking systems more than cables

Power transmission Power from the transformer to the low voltage switchgear is transmitted by suitable components in the busbar trunking system.



Busbar vs Cable Tray: Power Distribution Explained , Fuspan

Discover the differences between busbar systems and cable trays for efficient power distribution solutions. Understanding busbars is crucial for efficient power distribution.



"Busbar Systems"

"Busbar Systems" Experiment Objectives
Understanding switchgear's basic design and power distribution. Understanding the difference between an isolator and a circuit breaker.
Learning about



Contact Us

For datasheets, pricing, or custom high-speed optical interconnect solutions, please visit:
<https://www.syropy.com.pl>