

Intelligent Distribution Box onu





Overview

The ONV-IoT9000-DY-DG intelligent power box is an intelligent power control system with high integration, strong functionality, and simple installation. It adopts a frame structure, providing AC220V, AC24V, and DC12V multiple sets of voltage output, detection, and remote. Digital technologies such as Cloud Computing, Big Data, Internet of Things (IoT), Artificial Intelligence (AI) and Industry 4. Our intelligent and mechanical boxes in the area of power and data distribution offer modular solutions for all voltage levels and at the same time optimize functionality - for maximum efficiency with maximum safety. With this eFuse (electronic fuse) box reference board, Renesas provides an efficient solution for power distribution systems.



Intelligent Distribution Box onu

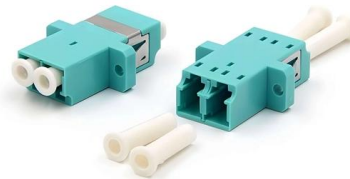


Electrical AC/DC Power Distribution Box & Cabinet for Industry

Power Distribution Equipment The intelligent AC/DC power distribution box is a distribution automation measurement and control terminal applied to line distribution transformers. It has the functions of

Electrical Distribution Boxes for Power Distribution

Electrical distribution boxes for modular power distribution and installation. Flexible distribution solutions for industrial and building electrical infrastructure.



Analysis and Improvement of Intelligent Low-voltage Integrated Power

In view of the problem that the door of the low-voltage power distribution box is opened for no reason under the premise that the intelligent terminal has been installed in Power Internet of Things, an

Y-IPD-EFUSE-PDB-01

With this eFuse (electronic fuse) box reference board, Renesas provides an efficient solution for power distribution systems. The compact, only 30cm 2 sized board



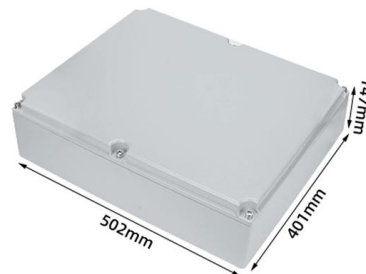
FTTH Flush Mount ONU Cabinet Etisalat Approved

The Etisalat ONU box follows precise specifications for high performance. The BLFM6615-2-35 model measures 640mm x 640mm x 150mm, providing ample



Intelligent Distribution , Solutions , ABB

Intelligent Distribution Solutions for smart low voltage electrical distribution Digital technologies such as Cloud Computing, Big Data, Internet of Things (IoT),



WO2024255014A1

The present invention provides an intelligent distribution box and a signal transmission method.



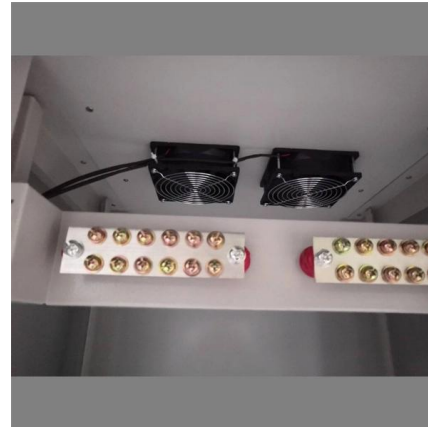
What is ONU and Why Does It Matter for Your Internet

What is Optical Network Unit (ONU)? An ONU converts fiber optic signals for your devices, ensuring fast, stable internet at home or business.



Intelligent distribution box solution: Providing safe and efficient

Innovative technology ensures electrical safety. Our distribution box is made of high-strength flame-retardant materials and features a modular design.



EL2P Intelligent Power Distribution Unit

The EL2P PDU provides reliable, intelligent power distribution in hospitals and clinics, reducing install complexity and enhancing uptime for medical networks



Intelligent Distribution , Solutions , ABB

Digital technologies such as Cloud Computing, Big Data, Internet of Things (IoT), Artificial Intelligence (AI) and Industry 4.0 are phenomenon which are changing



Intelligent distribution box-Product Center- Hangyue Intelligent

Intelligent distribution box Hangyue Intelligent Smart distribution boxes are an indispensable part of modern buildings and facilities, providing efficient and safe power supply for various applications.

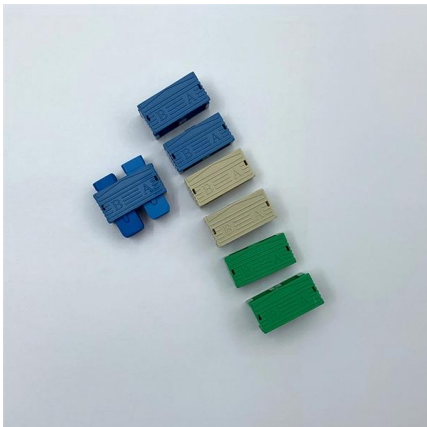


Intelligent Power Distribution Box Solution

Intelligent power distribution box is composed of traditional leakage protector, air switch, AC contactor and KC868-H8. Compared with the traditional power

IoT intelligent power box-IoT Intelligent Box

The ONV-IoT9000-DY-DG intelligent power box is an intelligent power control system with high integration, strong functionality, and simple installation. It adopts



Power distribution unit

A power distribution unit (PDU) is a device fitted with multiple outputs designed to distribute electric power, especially to racks of computers and networking equipment located within a data center.



Design and Construction of a 60a Smart Distribution Board with Real

This smart distribution board will incorporate intelligent features such as real-time monitoring, load balancing algorithms and remote control capabilities, the smart distribution board will enhance



Intelligent Power Distribution Box Solution

Compared with the traditional power distribution box, it is safer to cut off the strong power supply remotely, and it can save energy through the timing mode while controlling the equipments



Intelligent distribution box-Product Center-Hangyue Intelligent

Combined with the Hangyue intelligent operation and maintenance system, it achieves permission management for opening (closing) doors and connecting (disconnecting) wires of the distribution box



A Quick Guide to ONU (Optical Network Unit)

Discover the magic of ONU technology in our article. Uncover its types, key features, and importance. Elevate your understanding of optical network unit.

EL2P Intelligent Power Distribution Unit



Managing and installing a rack power distribution unit (PDU) has never been easier than with the EL2P PDU. Designed to simplify deployment and take stress out of



Intelligent Low-Voltage Distribution Boxes

Intelligent low - voltage distribution boxes are essential for power distribution. They're used in residential areas to supply stable power to homes. In commercial

What is ONU (Optical Network Unit)?

Discover what an ONU is, its features, benefits, and types. Learn how it enhances fiber-optic networks and how to choose the right ONU for your needs.



WO2024255014A1

The intelligent distribution box comprises multiple electrical devices, the electrical devices at least comprising a common power supply module, a main input intelligent circuit breaker, at least one



China China Intelligent Integrated Distribution Box

JP series integrated intelligent distribution box is a new type of outdoor integrated distribution device integrating multiple functions such as power distribution,



Construction of intelligent power distribution system in

The intelligent power distribution system presented in this paper improved the technology of the equipment in box-type substation.

Welcome to Channel Dive , Channel Dive

Welcome to Channel Dive. We're Informa TechTarget's new publication, focused on delivering daily news and analysis for executives at North

Product Parameter	
Product Types	Cable tray, ladder, perforated and wire mesh Ladder Tray
Materials	42 alloy, 304L, 316L, 304, 201, AL, ALUMINUM, SS304/316, FRP
Finish	GS, Electro gal, HDG, Powder coated,Electroplating, painting
Width	60, 100,150mm
Height	20mm, 30mm, 40mm, 50mm, 75mm or as you required
Thickness	0.8-2.0mm (Standard down down for wire mesh cable tray)
Length	2m, 2.5m, 3.0m, 3.5m, 4m, 5m
Accessories	400W, 600W or Customized
Load Type	100kg/m for 40mm height, 150kg/m for 60mm height
Point of Loading	Shanghai Port, Ningbo-Port etc.

ONU Cabinet

600*600*300 Wall Mount FTTH ONU Cabinet
Etisalat Approved 430*430*120 Flush Mount
FTTH ONU Cabinet Etisalat Approved
430*630*120 Flush Mount FTTH





Intelligent Remote Distribution Box Monitoring Solution

The distribution box is embedded with the DTU distribution device, distribution device power module, and distribution device power supply. By leveraging the intelligent



Low Voltage Power & Data Distribution , LEONI Group

Our intelligent and mechanical boxes in the area of power and data distribution offer modular solutions for all voltage levels and at the same time optimize functionality

Bivocom IoT Electrical Panel: Smart Power Distribution

Discover Bivocom IoT electrical panel solutions for smart power distribution, real-time monitoring, and predictive maintenance. Transform



Contact Us

For datasheets, pricing, or custom high-speed optical interconnect solutions, please visit:
<https://www.syropy.com.pl>