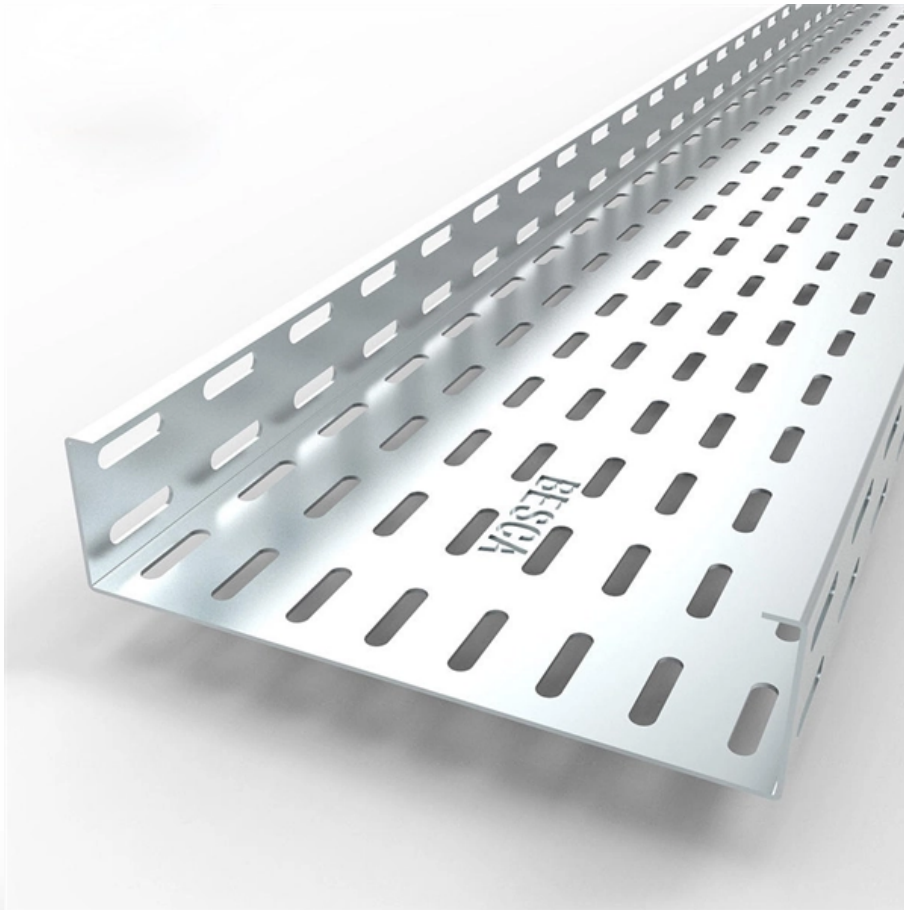




Syropy AI Connectivity

Intelligent Computing Center Uses Network Security Equipment QSFP28





Intelligent Computing Center Uses Network Security Equipment QSPF



H3C S12500G-AF Data Center Intelligent Core Switch-H3C

H3C S12500G-AF is H3C's new generation of AI intelligent switches for the core scenarios of data centers, providing the industry's highest switching. It provides the following features: CLOS+ multi

What is QSFP28? Guide to 100G Ethernet , NetAlly

This guide explains what QSFP28 is, how it works within the 100G Ethernet standard, and what network engineers should consider when planning upgrades, validating links, or



Compute 100Gb Ethernet Adapters for HPE

Through its Root of Trust server design down to the Network Interface Card (NIC), these security features are built-in so you can deploy with confidence. HPE Gen10 Plus servers will help prevent,

What is QSFP & QSFP28 Port? Everything You Need to

This comprehensive beginner's guide explores the world of QSFP port and QSFP28. Learn about their key features and how they play a vital role in high



Connectivity in the Era of Big Data: Adapting with

This article discusses the transition of server connection speeds in data centers from 10GE and 25GE to 100GE and beyond. It introduces QSFP28,



HPE Networking Comware Switch Series 5720

Moreover, these switches support HPE Intelligent Management Center (IMC), which delivers a consistent network manageability experience. Through centralized configuration, compliance, policy



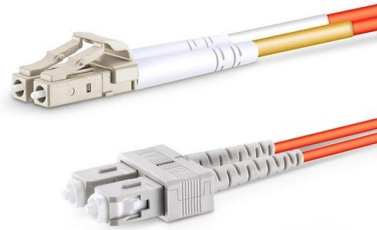
Is 100GBASE PSM4 QSFP28 the Right Choice for Your Data Center?

Explore the 100GBASE PSM4 QSFP28 module's capabilities. A deep dive into its design, MTP/MPO connectivity, and ideal applications in modern data center interconnects.



QSFP28 in High-Performance Computing (HPC) Environments

Enter QSFP28 -- a compact, high-speed transceiver module designed to meet the rigorous demands of HPC and data center networking. QSFP28, short for Quad Small Form-Factor Pluggable 28, builds



Essential Guide to Mellanox QSFP28 Cables and Their Uses

When it comes to building or upgrading a high-speed network infrastructure, choosing the right cables is crucial. One of the most popular and reliable options for data centers and enterprise networks is the

100G QSFP28 Applications, Use Cases and Deployment Scenarios

As network traffic continues to grow due to cloud computing, AI workloads, and high-speed enterprise applications, 100G QSFP28 has become the dominant form factor for 100-gigabit Ethernet



QSFP28 Transceiver: The Ultimate 100G Optical

Q: Can QSFP28 transceivers be used with different network manufacturers? A: Yes, many QSFP28 transceivers are designed to be



Check Point Security Appliance Brochure

Check Point provides customers of all sizes with the latest data and network security protection in an integrated next generation threat prevention platform, reducing complexity and lowering the total cost



DCS-7342 Series_v1

This ensures seamless data transmission and high bandwidth, making it ideal for cloud computing environments, large enterprise data centers, high-frequency trading, and large-scale content delivery

Everything You Need to Know About QSFP28 Ports:

Learn about QSFP28 ports: features, cable options (DAC, AOC, SMF, MMF), interoperability with SFP, and use cases in data centers, AI/HPC and



Intel® Ethernet QSFP28 Optic

When used with Intel® Ethernet Network Adapters with QSFP28 connectivity, these optics provide interoperability and secure connections for virtualized platforms, high-speed networking, and



QSFP28 vs QSFP+ Compatibility Guide , EDGE Optical

In summary, QSFP28 ports offer backward compatibility with QSFP+ modules, allowing for flexible and cost-effective network upgrades. However,



QSFP28 100G BiDi Optics: Halve Your Fiber Capacity,

Where to Use QSFP28 100G BiDi Modules? Data Center Interconnects (DCI): Perfect for connecting data centers over limited fiber pairs.

QSFP28 Transceiver: The Ultimate 100G Optical

The rapid development of data center technology and network infrastructure has created an urgent demand for faster, more efficient, and highly



SFP, SFP+, SFP28, QSFP+, QSFP28: Choosing the Right

A Practical Guide to SFP, SFP+, SFP28, QSFP+, and QSFP28 Transceivers When designing a network, most decisions naturally focus on the big elements: which firewall to deploy,



Cisco UCS 6536 Fabric Interconnect Data Sheet

The Cisco Unified Computing System(TM) (Cisco UCS®) is a next-generation data center platform that unites computing, networking, storage

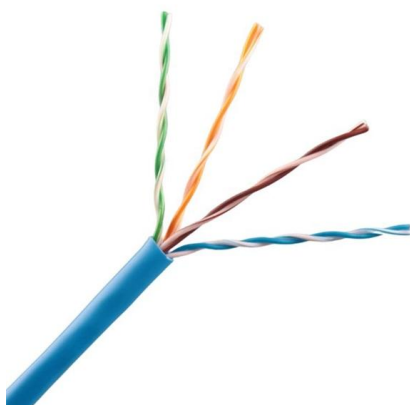


100G QSFP28 Applications, Use Cases and Deployment Scenarios

Discover where and why 100G QSFP28 is widely deployed, covering data center, cloud, DCI, carrier, and AI network applications with practical deployment insights.

Everything You Need to Know About QSFP28 Ports: Features,

Learn about QSFP28 ports: features, cable options (DAC, AOC, SMF, MMF), interoperability with SFP, and use cases in data centers, AI/HPC and enterprises.



Huawei HiSecEngine USG6000F Series Overview , PDF

The Huawei HiSecEngine USG6000F series AI firewalls are designed to enhance network security amidst increasing digital threats and data growth. They utilize

H3C S6825 Series Data Center Switches-



H3C S6825 high-density intelligent switch series is developed for data centers and cloud computing networks. It provides powerful hardware forwarding capacity and abundant data center features.



Understanding the Difference Between SFP vs QSFP28:

The QSFP28 (Quad Small Form-factor Pluggable 28) transceiver is a highly versatile and efficient optical module used in data center and high

QSFP28 Transceiver: Complete 100G Connectivity Guide (2026)

QSFP28 transceiver guide covering module types, pricing, compatibility, and deployment. Learn how to choose, deploy, and troubleshoot 100G QSFP28 optics.



Various specifications optional



What is QSFP & QSFP28 Port? Everything You Need to

QSFP28 is not a new product; it is widely used in High-bandwidth data center switches, backbone routers, and storage equipment. As one of the most



Contact Us

For datasheets, pricing, or custom high-speed optical interconnect solutions, please visit:

<https://www.syropy.com.pl>