

# **Integrated Power Supply Production**





## Integrated Power Supply Production

---



### ITE Power Supplies RoHs Compliant Integrated Power Designs

Integrated Power Designs has a wide range of AC/DC & DC/DC power supplies from 25W to 400W for your Communication, Information, Audio, Visual, Business & Office applications. We have power

### Power management integrated circuit

A power management integrated circuit (PMIC) is an integrated circuit for power management. Although it is a wide range of chip types, most include several



### IndIT PMS brochure dd

The IndustrialIT PMS provides an integrated set of control, supervision and management functions for power generation, distribution and supply in industrial plants.

### What Is A Integrated Power Module

What is an Integrated Power Module (IPM)? A Deep Dive into Design, Applications, and Advantages Integrated Power Modules (IPMs) represent a significant advancement in power



### **What are Integrated Energy Systems? - Find out here , Danfoss**

Integrated energy systems, sector integration, sector coupling - it goes by many names but is, in essence, the same principle: creating a smart energy system that links energy-consuming sectors to

### **INTEGRATED POWER DEVICES SIMPLIFY AN EMBEDDED DC-DC POWER SUPPLY**

Abstract A new class of integrated power devices has been developed to simplify embedded dc-dc power supply designs. The paper includes comparison with existing discrete/co-package solutions



### **Chroma 62000D Series Bidirectional DC Power Supply**

Chroma 62000D programmable bidirectional DC power supplies provide both power source and load characteristics, ideal for testing renewable energy power systems such as PV, storage, and EV





## INTEGRATED POWER

INTEGRATED POWER Power conversion applications are diverse, from ultra-low-power energy harvesting in IoT, to high-power resonant converters in notebook



### Power, supply chain integration and quality performance of agricultural

The results show that different types of power have different effects on contract farming. In particular, non-economic power significantly and positively affects supply chain integration. Its impact

### Integrated production and energy supply planning on an industrial site

We propose a new extension of the Proportional Lot-sizing and Scheduling Problem relying on a two-level structure for time discretization. The first level is related to the product demand satisfaction, the



### A comprehensive review of wind power integration and

Integrating wind power with energy storage technologies is crucial for frequency regulation in modern power systems, ensuring the reliable and cost



### Enpirion PowerSoC Modules Integrate Nearly all

Intel Enpirion PowerSoC modules are DC-DC step-down converters that integrate nearly all the components needed to build a power supply without



### Custom Power Supplies Integrated Power Designs

Design a custom power supply based on one of our AC-DC or DC-DC power supplies to fit your Medical, Industrial, Audio, Video or Communication needs.

### DC smart grids for production halls

In the DC-INDUSTRIE 2 project, researchers from Fraunhofer IPA and Fraunhofer IISB have teamed up with over 30 partners to develop and trial a concept for an intelligent, economic and efficient DC



### Basics of power supply design for MCU

Application: Scope of the engineering process. Power source: External energy source given with certain characteristics. Outside of the application. Power supply: System that converts voltage from the



### IPS talks 'first cell-to-system' BESS manufacturing

We caught up with the CEO of Bulgaria-based International Power Supply (IPS) to discuss its claimed first mass-scale cell-to-system BESS



### Power supplies - Full power for your production

Weidmüller offers a wide range of solutions that perfectly meet the diverse requirements of the machine construction, power, shipbuilding and process

### TIP Power for challenging environments

Totally Integrated Power Reliable. Safe. Efficient. Complex demands call for specific know-how. The entire lifecycle of power supply in mind. Much more than a comprehensive power supply portfolio. All voltage levels, all issues of energy management. Complex integration made easy in all industries. Influence the future for smooth car production. Reliable and safe operation. Because outage is out of the question. Maximum safety from the well to the customer. Cost-effective and time-efficient in rough environments. Meeting regulations, exceeding standards. Ecologically proactive, economically worthwhile. Smart power runs smart buildings. Industrial and building automation in exemplary team plays. [siemens /tip](#). Integrated power supply solutions enable new levels of reliability, safety, and efficiency for industries, buildings, and facilities. Even more so if they're seamlessly linked to industrial and building automation systems, and lifecycle services. Whatever the challenge, Totally Integrated Power leverages the full potential of any [See more on assets.new.siemens](#). ScienceDirect





## Integrated Energy System - an overview , ScienceDirect Topics

An integrated energy system is defined as a cost-effective, sustainable, and secure energy system in which renewable energy production, infrastructure, and consumption are integrated and coordinated

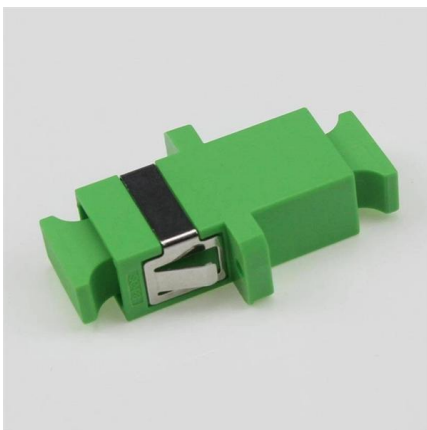


### Integrated Power Designs AC-DC Power Supplies 25-400 Watts

IPD manufactures AC-DC power supplies in its US facility. Power supplies range in power from 25-400 watts with 1-4 outputs. Outputs range from 3.3-48 Volts

### Integrated Power Designs Multiple Output Power Supplies 25-400 Watts

Integrated Power Designs offers AC-DC & DC-DC Multiple Output Power Supplies for Medical, Industrial and Audio / Video Applications



### TIP applications for power distribution , Application manual for

Totally Integrated Power (TIP) by Siemens stands for consistent solutions in the planning of the electric power supply for infrastructure, facilities and buildings of industrial plants. Adjusted to the factory

## Products -- Integrated Power Systems



Integrated Power Systems specializes in both medium and low voltage custom power distribution solutions. We can provide standard products to fit your needs



### **INTEGRATED POWER DEVICES SIMPLIFY AN EMBEDDED DC**

The paper also details how treating integrated devices as power supply modules instead of co-packaged components significantly improves the system performance and long-term reliability, and reduces the



### **Integrating virtual power plants for sustainable supply**

This paper aims to design and integrate virtual power plant (VPP) into a geographically dispersed production-distribution network for attaining



### **Energy Systems Integration for Multi-Energy Systems**

This book offers a comprehensive approach to energy systems integration (ESI) that optimizes the design and operation of energy systems, maximizing the benefits of





## Revolutionizing Power Supplies: The Advantages of

The integrated passive components simplify design by streamlining the process and reducing the BOM, which addresses challenges with component compatibility



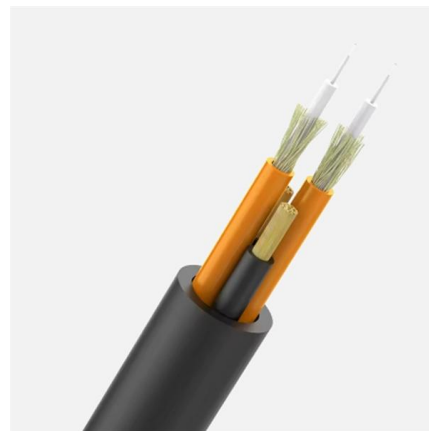
### Atlantic International University

Hier sollte eine Beschreibung angezeigt werden, diese Seite lässt dies jedoch nicht zu.



## 4 Common Questions When Isolating Signal and Power

While a digital isolator's secondary side typically requires little power, system designers often include an additional power allowance to supply power for multiple devices. In this article, I'll share common



## Contact Us

---

For datasheets, pricing, or custom high-speed optical interconnect solutions, please visit:  
<https://www.syropy.com.pl>