

Integrated Energy Cabinet Anti-Electro-Trace Operation Guide





Overview

DIP switch or rotary encoder switch Overview Information Identification Conventions Please read this documentation carefully before installing the inverter and observe the safety instructions! This.



Integrated Energy Cabinet Anti-Electro-Trace Operation Guide



New Energy Storage Cabinet Assembly Diagram: A Step-by-Step Guide

If you've ever tried assembling IKEA furniture without the manual, you'll understand why clear assembly diagrams matter for new energy storage cabinets. This guide serves engineers, solar farm operators,

Integrated Energy Storage Cabinet

This energy storage cabinet supports both on-grid and off-grid configurations, with harmonic distortion $\leq 3\%$. It complies with international standards such as



Electronic Cabinets

Our electronic cabinet integration services are engineered to deliver robust performance, system efficiency, and safety compliance. Whether you're

SKBES0232-950Liquid CoolingEnergyStorage Cabinet UserManual

The installation and operation of the liquid-cooling energy storage cabinet must be completed by professional technicians who have received special training, have read and are familiar with all the



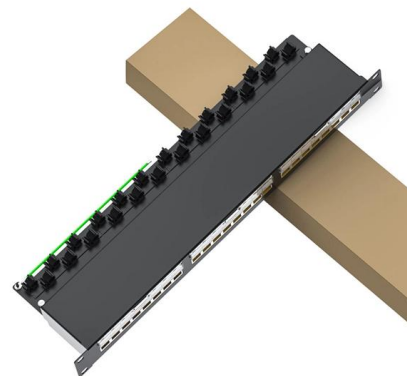
Converter cabinet units

Use the following checklist to guide you through the electrical installation procedure for the cabinet unit. Read the "Safety instructions" section at the start of these Operating Instructions before you start



All in one C& I Energy Storage Cabinet

Product Features Integrated Design: Combines inverter, energy storage cabinet and intelligent control functions for a compact and efficient solution. Intelligent air



Industrial Heat Tracing

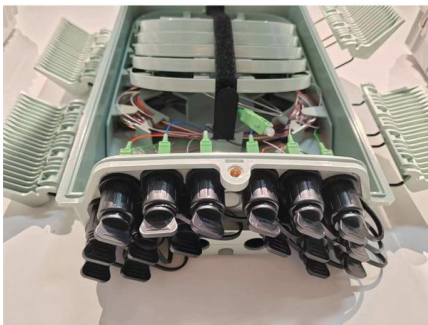
Industrial Heat Tracing Installation and Maintenance Manual for Self-Regulating and Power-Limiting Heating Cable Systems





Energy Storage Systems User Manual

This manual is suitable for personnel who carry out transportation, installation, and other operation of this energy storage integrated system. Readers should meet at least the following requirements



SINAMICS S120 Equipment Manual Cabinet Modules

SINAMICS S120 Cabinet Modules are the components of a modular cabinet unit system for multi-axis drives with a central supply infeed and a common DC link busbar, as typically found in paper-making

THE FIRETRACE FIRE SUPPRESSION SYSTEM FOR ELECTRICAL PANELS

Today's data centre and electronics industries are looking for a fire suppression solution that is safe, effective and mindful of the environment. The Firetrace Fire Suppression system is unique technology,



with Distribution Installation & Operation Manual

Cordex rectifier modules use a high frequency, switched mode conversion technique to provide a fully regulated and isolated DC output from the AC mains. The rectifier input is wide range to allow use on

Integrated energy storage cabinets



To use an integrated energy storage cabinet, install batteries and related equipment into designated compartments. The cabinet provides a centralized and secure



EC1000 Indoor Energy Cabinet Guidelines

Cabinet Installation and Use Guidelines - EC1010 - Free download as PDF File (.pdf), Text File (.txt) or read online for free.



One page_Will Fire Protection be Required on All Wind

And, for those who need more advanced options, we'll explore systems that deliver clean agents and put out electrical fires without damaging equipment. Level One Electrical Cabinet Fire Protection:



Product manual

There is no integrated fuse inside the OmniCore C30 Type A controller. Add an external fuse (time-delay) or circuit breaker (class K) according to full load current, as marked on the controller nameplate.



ESS-TRENA Folder-EN 1228

TRENE series C& I energy storage cabinet is a highly integrated, all-in-one solution with versatile application scenarios.



The Ultimate Guide to Energy Storage Cabinet Installation Steps (With

Who Needs This Guide and Why? You've just unboxed your shiny new energy storage cabinet, and suddenly realize it's about as easy to assemble as IKEA furniture without the pictograms.

USER MANUAL BATTERY CABINET

Before installing batteries into the cabinet, carefully remove all items from inside the cabinet and lay it on its back, preferably on a clean surface or a furniture blanket.



IEEE Std 844.2-2017/CSA C293.2-17, IEEE/CSA Standard for Skin

IEEE/CSA Standard for Skin Effect Trace Heating of Pipelines, Vessels, Equipment, and Structures-- Application Guide for Design, Installation, Testing, Commissioning, and Maintenance This document



Advanced Energy® AE 500 Inverter

Advanced Energy Industries, Inc., (AE) provides information on its products and associated hazards, but it assumes no responsibility for the after-sale operation of the equipment or the safety practices of the



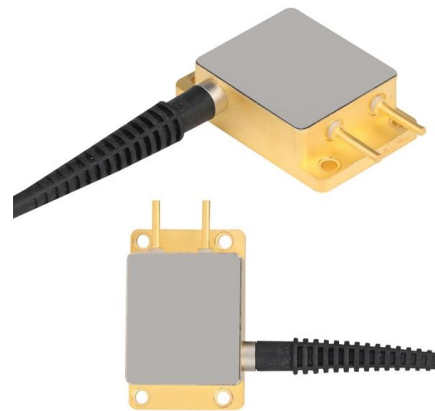
framsida_sv.fm

Description ESD (Electrostatic Discharge) is the transfer of electrostatic charges between two objects with varying charges, either through direct contact or through an electrical field. The discharge



Converter cabinet units

Use the following checklist to guide you through the mechanical installation procedure for the cabinet unit. Read the "Safety instructions" section at the start of these Operating Instructions before you



2030.2.1-2019

Scope: This document provides alternative approaches and practices for design, operation, maintenance, integration, and interoperability, including distributed resources



Energy Storage System Operation & Maintenance Handbook

The various devices of the integrated energy storage system have been installed and fixed in the cabinet of the integrated energy storage system before leaving the factory, and the integrated energy storage



Energy Storage System Operation & Maintenance Handbook

Before transporting, storing, installing, operating, using or/and maintaining the equipment, read this handbook, the manual.

Product manual

Note The emergency stop device on the FlexPendant is operational when the robot is powered. Indicators to be used to verify that the robot is powered are the main switch on the cabinet or the



Pixii Home Outdoor Cabinet Grid tied energy storage system Shaping

Grid tied energy storage system cu ub u P i Publicu 2Installation Guide Pixii Home Outdoor Cabinet Document number: 15342 rev. 1.2 System safety and environmental precautions Product warranty





Contact Us

For datasheets, pricing, or custom high-speed optical interconnect solutions, please visit:

<https://www.syropy.com.pl>