

Installing a 400G laser diode





Installing a 400G laser diode



How to improve laser diode lifetime! Advice

Improve Laser Diode Lifetime: We discuss various package types & best practices for ensuring proper laser diode mounting, increasing lifetime.

Hands-On Tutorial for Laser Diode Integration with Arduino

Step-by-step guide to wiring, coding, and safely integrating a laser diode with Arduino. Includes safety tips, troubleshooting, and beginner-friendly advice.

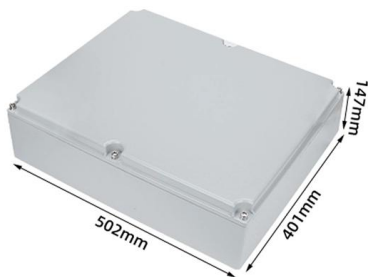


400 nm Collimated Diode Laser System

400 nm Violet Collimated Diode Laser System
The LRD-0400 Series of Collimated Diode (Semiconductor) Lasers are ideal for applications requiring a short

405 nm laser (Diode; PM Fiber)

DESCRIPTION Polarization-maintaining fiber-coupled 405 nm diode laser features extreme brightness combined with perfect beam shape and virtually perfect Gaussian intensity distribution. 405 nm is



Laser Diode Tutorial

The purpose of this laser diode tutorial is to provide the information necessary to create a long lifetime, stable laser diode system. Much of what will be discussed will be in general terms of laser diode

400 nm Low-Noise Collimated Diode Laser System

400 nm Violet Low Noise Collimated Diode Laser System The LLD-0400 Series of Low-Noise Collimated Diode Lasers are ideal for applications requiring less than 1% noise and output power levels from 5



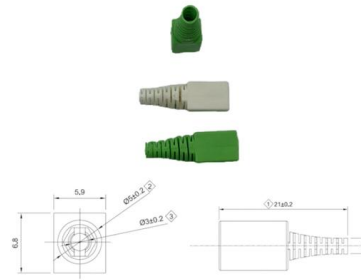
Find & Compare Optics , Photonics Services

The largest database in Optics and Photonics Compare products based on your own technical specification criteria.



CS-400G User Manual

Rev: 02/2009 User manual: CS-400G page3 of 6
Operating temperature is 10~35°C . Let laser cool off 10minutes after 2 hours of operation, to ensure maximum lifetime for the diode.

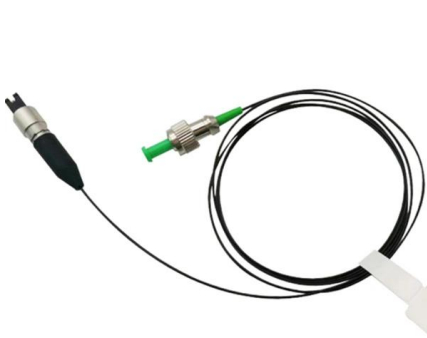


Microsoft Word

Prior to installation and operation of the laser, the paths of the beams and effects should be considered, particularly with respect to how they will reach the audience.

CS-400G_en

Projector should be put in a water-proof housing when operated outside. Operating temperature is 10~35°C. Let laser cool off 10minutes after 2 hours of operation, to ensure maximum lifetime for the



How to Build a Laser Diode Circuit

In this article, we will show how to connect and build a simple laser diode circuit to get light output from a laser diode.



Go Home!

In this video, we will take you through the process of adding limit switches to the Scuplfun S9 (or similar diode laser). We will cover the physical installation, wiring, and configuring with GRBL



Longer Ray5 20w diode laser upgrade kit. Install and testing.

Title: Longer RAY5 20W Laser Engraver , High-Power Cutting & Engraving! Description: The Longer RAY5 20W Laser Engraver is a powerful, high-precision laser cutter and engraver designed for



LASERWORLD CS-400G USER MANUAL Pdf

View and Download Laserworld CS-400G user manual online. CS-400G lighting equipment pdf manual download.



New Diode Laser Installation - Step-by-Step Guide with Results!

In this video, we walk you through



DL400 Series 400nm Diode Laser System up to 300mW Product

The DL400 series diode laser is ideal for applications that require a wavelength of 400nm and output power levels up to 300mW. The laser features a compact design, long operating lifetime, easy



High Power 400W 1064nm Fiber Coupled Laser Diode Module

These high power 1064nm laser diodes deliver up to 400W of output power with an emission bandwidth of 5 nm. The multimode fiber pigtail has a 200µm core, NA 0.22. The package is compact, heat

Quantel High Power Laser Array (400W)

High Power Laser Diode Stack from Quantel: These lasers can be built from 1 to 19 diode bars with output powers of 60 Watts QCW to 400 Watts QCW. These laser



1450nm, 400mW, Grating-Stabilized Butterfly Laser Diode

The laser diode is mounted in an industry-standard 14-pin butterfly laser package with internal TEC, thermistor, and photodiode. Up to 600mW of power is available

Diode Laser Mounting Instructions



Find detailed Diode Laser Mounting Instructions at Akela Laser. Access clear, reliable guidance for the proper installation of your diode laser modules.



Manual

This document is an instruction manual for laser projectors models CS-250G, CS-400G, and CS-500 RGY. It provides safety instructions, installation and operation

400 nm diode laser, CW laser with narrow linewidth, low noise UV-laser

Diode laser at 400 nm. It features a narrow spectral linewidth, long coheren length, stable wavelength, long lifetime and easy operation.They are widely used in holography, interference, fluorescence,



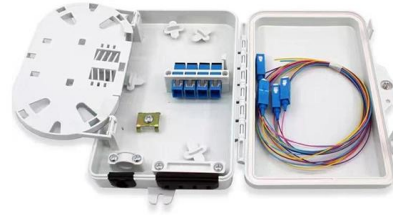
RS-400G

Installation safety Prior to installation and operation of the laser, the paths of the beams and effects should be considered, particularly with respect to how they will reach the audience. If direct audience



LASERWORLD RS-400G USER MANUAL Pdf Download , ManualsLib

View and Download Laserworld RS-400G user manual online. RS-400G flood light pdf manual download.



DL400 Series 400nm Diode Laser System up to 300mW

Overview The DL400 series diode laser is ideal for applications that require a wavelength of 400nm and output power levels up to 300mW. The laser features a compact design, long operating lifetime, easy

Laserworld Club Series CS-250G, CS-400G, CS-800G, CS-1200B

Download the manual for Laserworld Club Series CS-250G, CS-400G, CS-800G, CS-1200B laser projectors. This manual covers basic operation, safety instructions, and features.



400nm, 50mW Laser Diode

400nm, 50mW Laser Diode Module Overview: Long coherent length diode laser module from CNI Laser. With a wavelength at 400nm, this module is made to produce a long coherent length, stable



After installing the device, an inspection and official approval is indispensable for the overall setup. The inspection must follow the european guidelines EN 60825-1 and corresponding regulations for the

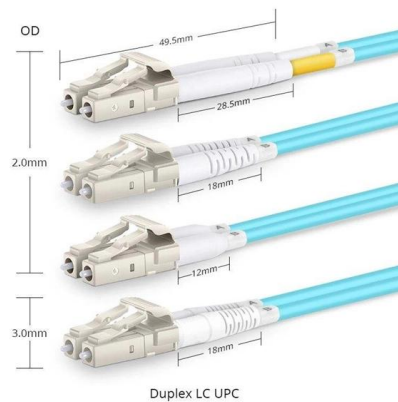


Laserworld CS-400G User manual , Manualzz

View online (6 pages) or download PDF (323 KB) Laserworld CS-400G User manual o CS-400G stroboscopes & disco lights PDF manual download and more Laserworld online manuals

Laser Diode: The Ultimate Beginner's Guide

This is the ultimate beginner's guide to the laser diode. Learn how lasers work and how you can use them in your own projects with this guide.



Contact Us

For datasheets, pricing, or custom high-speed optical interconnect solutions, please visit:
<https://www.syropy.com.pl>