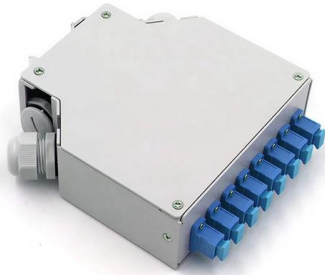


Installation steps for surface-mounted network cabinets





Installation steps for surface-mounted network cabinets

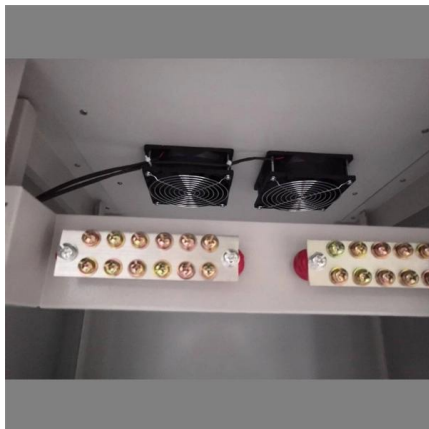


Installation and fixation of communication cabinets and racks,regular

Installation and fixation of communication cabinets and racks The important role of cabinets and racks. In the telecommunications industry, cabinets and racks are the nerve centers of

Network Cabinet Essentials: Organizing Your Network

Proper installation and setup of a network cabinet are crucial for ensuring the longevity and efficiency of your network equipment. Following these



Wall Mounted Network Cabinets: Design, Functions and Installation

Wall mounted network cabinets, or wall network cabinets, are compact, space-efficient solutions designed to house and organize networking equipment in environments where floor space

Network Installation Part 2 & 3: Prepping The Wall & Mounting The Cabinet

Here we have parts two and three of the Network Installation series. Part two covers locating studs with a stud finder and marking them with a level. Part three covers mounting plywood to the wall



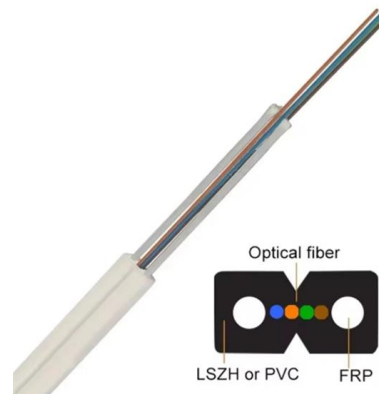
How to Mount a Network Rack , Mount a Network Wall Cabinet , Easy

In this video I show you how I mounted a Tripp Lite SRW12US SmartRack 12U Wall Mount Rack Enclosure Cabinet. It has a nice wall plate that you can install s



Mounting Configurations, Network Switch Setups

Learn how to optimize network switch setups by mastering mounting configurations. Explore rack, wall, and desktop mounting options for enhanced performance and



How to Install a Server Rack Cabinet: A Step-by-Step Guide?

Key steps include measuring the installation area, mounting rails, organizing cables, and testing stability. Proper grounding and compliance with safety standards are critical. This guide





Network cabinet design considerations

With installations in existing buildings, there may be building shortcomings (no raised floor, low ceiling, concrete pillars in the room, etc.) that can influence the

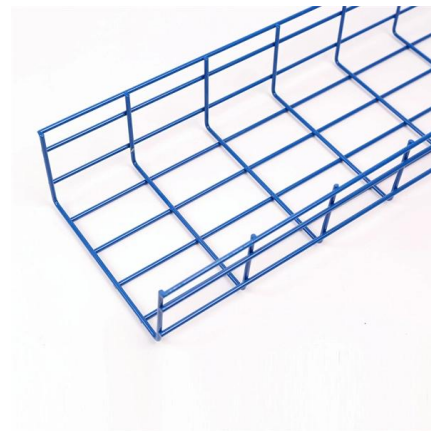


How to Install a Server Wall Mount Rack , SysRacks Blog

Network systems are responsible for computing tasks, as well as processing and storing data. Thus, they are found anywhere -

Network Cabinet Cabling: Guide & Documentation Tips

Practice-oriented guide to network cabinet cabling with documentation template, safety aspects & software tips.



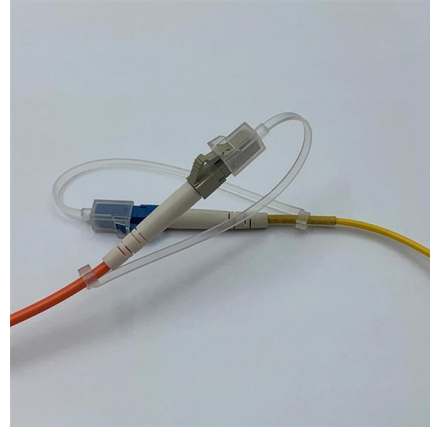
Mastering Data and Server Cabinet Installation: A Comprehensive Guide

Blog Mastering Data and Server Cabinet Installation: A Comprehensive Guide Context: Begin by emphasizing the importance of proper data and server cabinet installation in modern IT



Network Rack Installation 101 - VCELINK

In this guide, we'll see the tools you'll need, the best and proven practices for server rack setup and network rack setup, and the detailed steps



12U Wall-Mounted Network Cabinet: Features and Installation Guide

As data center construction moves towards enhanced overall availability, the demand for small-scale network wiring, including the 12U wall-mounted network cabinet, continues to grow. This versatile

How to Mount a Tripp Lite Network Rack in 6 Minutes

? Mounting a Tripp Lite network rack doesn't have to be hard! In this 6-minute tutorial, I show you how to install a 24x24 Tripp Lite network rack completely by yourself with simple steps.



Network Rack Installation 101 - VCELINK

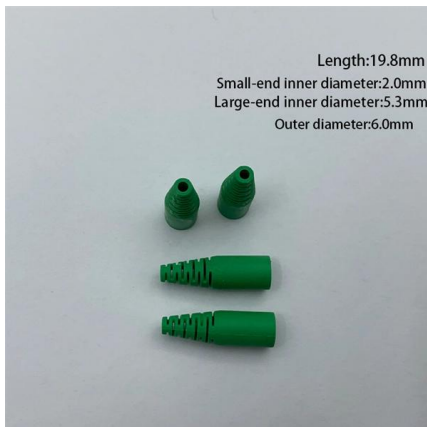
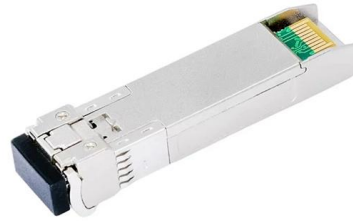
Master server and network rack setups effortlessly with easy steps, pro tips, and best practices for beginners, DIYers, and pros!

How to Properly Install and Set Up a



Network Cabinet

Installing and setting up a network cabinet system correctly is essential for maintaining an efficient and organized network infrastructure. In this



10 Steps to Network Installation

The Ultimate Network Installation Guide: Installing a Network in 10 Steps This entry was posted in Network installations, Networking, Tips & Tricks

Setting Up a Server Rack - Server Rack Installation

Fasten it using special accessories and check its reliability. Mounting Servers and Equipment When the rack is mounted, it's time to install servers and



How to Install a Network Cabinet & Data Drops in an Office

Learn how to install a network cabinet and data drops in an office space like a pro!



ESTEL Tips for Installing Wall Mount Server Cabinets in

Learn how to install a wall mount server cabinet in tight spaces with tips on location, ventilation, cable management, and ensuring stability for your setup.



installation 9U wall-mounted rack cabinet designed to efficiently

this is A welding less 9U cabinet all scrow based This installation involves setting up a 9U wall-mounted rack cabinet designed to efficiently store and manage networking and server equipment. The



Network Cabinet Installation Steps: A Detailed Tutorial from Scratch

For many IT professionals and equipment administrators, understanding how to correctly install a network cabinet is crucial. This article will guide you through the network cabinet installation process,



How to Install Ethernet Wall Plates and Surface Mount Boxes

Easily install Ethernet wall plates and surface mount boxes to enhance your network connection. Save time and money with our step-by-step guide for a high-quality setup.





Network Cabinet Installation Steps: A Detailed Tutorial from Scratch

2. Network Cabinet Installation Steps(1) Inspect Packaging and Cabinet Components Before starting the installation, first check the cabinet packaging and all components to ensure that all parts are



BOLEIN Floor Stand Network Cabinet Server Rack

How to assemble one floor-standing network server rack cabinet? This video will show you these detailed steps.

Mastering Data and Server Cabinet Installation: A Comprehensive Guide

Context: Begin by emphasizing the importance of proper data and server cabinet installation in modern IT infrastructures. Purpose: Explain that the goal of the post is to provide a step-by-step guide for



9020rax.mif

This section describes the procedure for installing a switch in a rack or cabinet using the optional Telco and EIA Shelf Bracket kit, and provides the following information:



How do I set up a server cabinet?

This paper presents a systematic guide to server cabinet installation, covering site preparation, physical assembly, cable management, power and



Wall Mounting Network Cabinet

Wall mounting a heavy network cabinet does not have to be a strenuous task. This video shows you how to prepare the mounting site ahead of time to allow for

Contact Us

For datasheets, pricing, or custom high-speed optical interconnect solutions, please visit:
<https://www.syropy.com.pl>