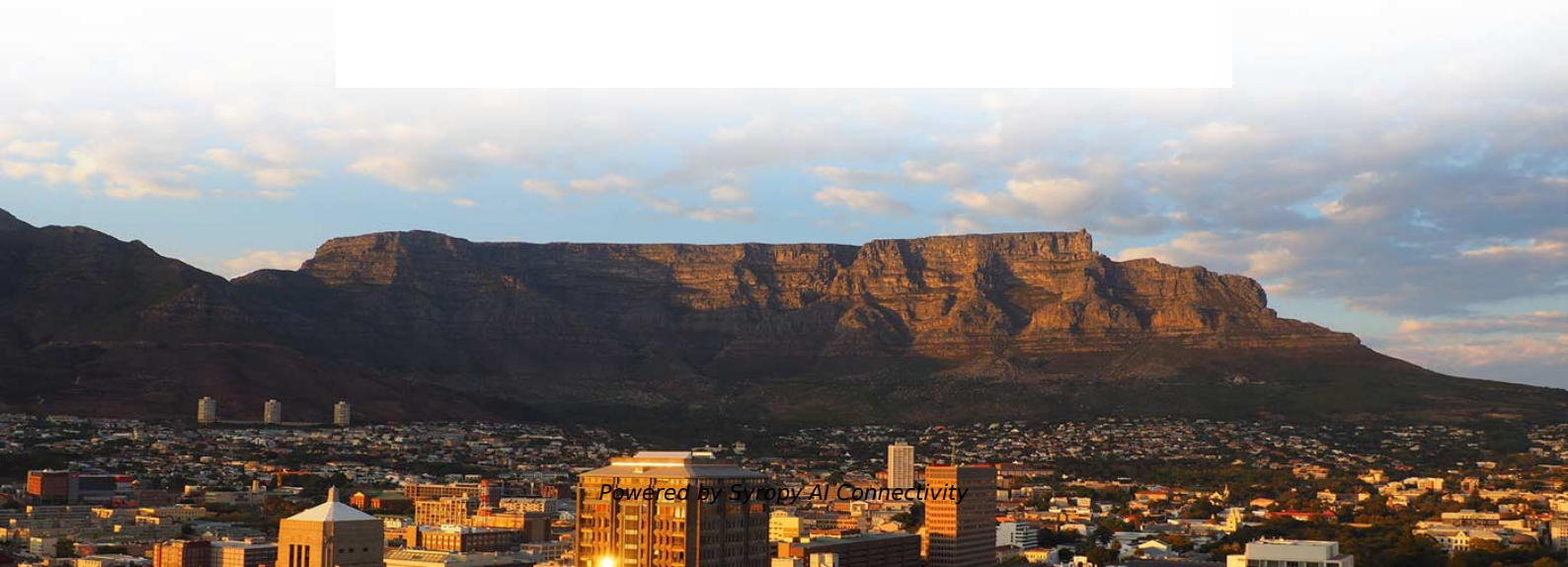


# **Installation requirements for wiring troughs in distribution boxes**





## Overview

---

Ensure safe placement: install in dry, accessible areas with good ventilation and at appropriate height (typically ~1. In this guide, we'll break down everything you need to know to install a distribution box correctly and confidently. Choose the right box based on environment (indoor/outdoor), load capacity, and durability. According to the electrical load requirements and circuit layout, confirm the size, model, and quantity of the required distribution box. This category ner and equipment retainer (switch/socket boxes, cell phone t retainer made of thermoplastic material. - Secondary circuit wiring should meet design requirements, and the insulation wire rating should not be lower than 450/750V except for electronic component circuits; copper core insulated wire or cable conductor cross-section for current circuits should be no less than 2. If the contractor should note items in the drawings or the specifications, construction of which would be code violations, promptly call them to the attention of the University of Michigan's represe tative in writing.



## Installation requirements for wiring troughs in distribution boxes

---



### How to Install an Electrical Pull Box: NEC Rules & Sizing

A professional guide to sizing and installing electrical pull boxes and junction boxes for straight, angle, and U pulls, according to NEC 314.28.

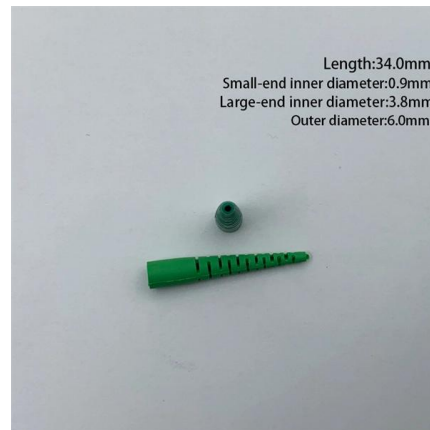


### How to Install a Cable Distribution Box Safely and

This article provides a detailed overview of the entire process of installing a distribution box, from pre-installation preparation to post-installation

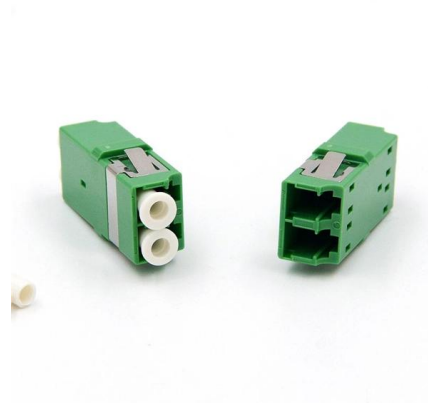
### Transformer and distribution cabinet equipment installation, standards

Equipment installation location requirements  
Transformer rooms, capacitor rooms, distribution device rooms, and control rooms should not have irrelevant pipes passing through them.



### Requirements And Specifications For Installation Of

The installation requirements and specifications of Distribution box involve many aspects, including site selection, fixing method, wiring specifications



### Electrical Distribution Panel Guide: Types, Sizing & 600

Master power distribution panels with our complete guide covering electrical distribution boards, 3 phase consumer units, panel sizing from 100A to



### NEC Requirements for Panelboards and Load Centers

The National Electrical Code (NEC) provides comprehensive safety standards for electrical installations, including requirements for electrical panels (main service



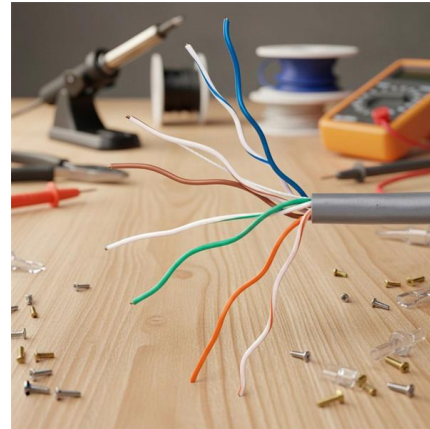
### Key Points Of Installation And Collocation Of Distribution Box In

The wire bundle shall not be in direct contact with the inlets and outlets of the box. The power lines entering the switch box shall not be connected with pins. The inlets and outlets of the mobile



### Conduit Fill Chart & NEC Calculator , Wire Capacity Tables

Master conduit fill calculations with our complete NEC guide including fill charts, wire capacity tables, and step-by-step examples. Learn proper conduit



### CATALOG Wiring ducts, floor boxes and trunking Easily allows for

Using ABB plastic trunking, a very flexible electric distribution system can be created. The wide variety of the available elements allows for different installation solutions.



### Wireways Selection Guide: Types, Features,

Wireways are designed to protect cables from environmental contaminants such as dust, dirt, oil, and moisture. Wireways--sometimes known as "troughs" or



### Engineering Business Directive

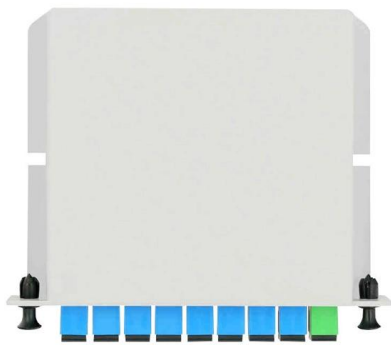
This technique forms the approved installation procedure for all underground cables, which are installed within Western Power Distribution with the exception of pressure-assisted cables at 33kV, 66kV and





### Cautions and Requirements for Installation of

Distribution box is a low-voltage distribution device which assembles switchgear, measuring instruments, protective appliances and auxiliary equipment in a closed



### Method Statement for Installation & Testing of Electrical

Method Statement for Installation & Testing of Electrical Distribution Board This method statement will help the electrical engineers and supervisors for the

### The Complete Guide to Distribution Box: Installation, Types & More

Making Smart Electrical Infrastructure Decisions Distribution boxes form the foundation of safe and reliable electrical systems. Understanding their components, installation requirements, and



### Global Concealed Distribution Box Market Size, Industry Trends

Concealed Distribution Box Market Outlook By Size and Forecast The trajectory of the Concealed Distribution Box Market over the next decade is characterized by a robust expansion



## Design requirements and standards for low voltage

Regularly inspect and maintain your distribution box to catch issues early and ensure safe operation. Design requirements for low voltage distribution

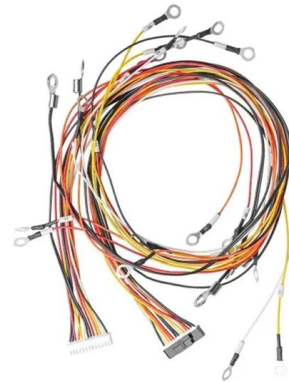


## Size determination, installation method and wiring mode

The distribution box is the central hub of the home circuit and the general control of our daily power consumption. It is an indispensable electrical equipment. If there

## How to Install a Cable Distribution Box Safely and

In modern electrical systems, cable distribution boxes (also known as electrical distribution boxes or distribution boxes) play a crucial role as the key



## UK Electrical Wiring Regulations: BS 7671 Guide (2025)

Who the wiring regulations apply to UK electrical wiring regulations (BS 7671) apply to anyone who designs, installs, alters, inspects or tests fixed electrical



## Installation requirements for distribution boxes

Installation of closed or explosion-proof electrical facilities; distribution box electrical components, meters, switches and lines should be arranged neatly, firmly installed, easy to operate.



## DESIGN GUIDELINE 4

Install materials and equipment in accordance with applicable standards, codes, requirements, and recommendations of national, state, and local authorities having jurisdiction, BICSI, and National

## Transformer and Distribution Cabinet Equipment

These standards and requirements are based on relevant technical specifications and industry best practices to ensure the safety and reliability of



## Requirements And Specifications For Installation Of

In flammable and explosive environments, explosion-proof distribution boxes should be selected and explosion-proof treatment should be carried out.



## UFGS 26 20 00: Electrical Systems Guide , PDF

This document provides specifications for interior electrical distribution systems. It covers requirements for materials, equipment, and installation of components like



## Contact Us

---

For datasheets, pricing, or custom high-speed optical interconnect solutions, please visit:  
<https://www.syropy.com.pl>