

Installation of sockets in charging pile distribution box





Installation of sockets in charging pile distribution box



Charging Pile Protection Box Waterproof Distribution Box

The company produces distribution boxes, power distribution cabinets, imitation Rittal cabinets, network cabinets, energy storage cabinets, monitoring boxes, and

HT-15 ways outdoor rain-proof charging pile open waterproof

Secure your charging pile power distribution with our outdoor rain-proof 15-way distribution box. Ideal for open and waterproof applications.

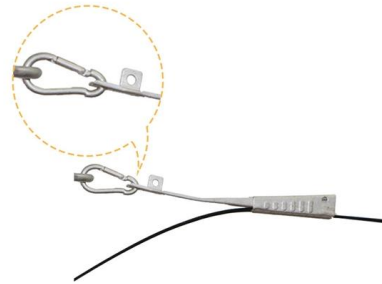


Understanding Electric Vehicle Charging Piles: Common

Common indicators and functional descriptions of electric vehicle charging piles [Simple principle Before explaining the various indicators, it is

Electric vehicle AC charging pile Product user manual

MODEL NO. PEEV-ACK007-1G Thank you for choosing our AC charging pile products. To help you properly use, operate, maintain, inspect, troubleshoot, and maintain this AC charging pile product,

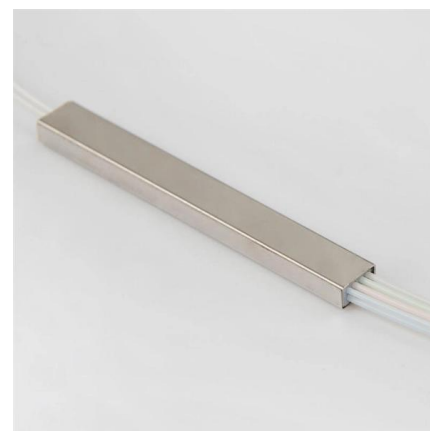


Overview of Key Points in Charging Pile Structure Design

The charging pile is generally composed of a pile body, a charging socket, a protection control device, a metering device, a card swiping device, a human-computer interaction interface, etc., as shown in

Infrastructure for charging electric vehicles: Approved Document S

These requirements align with the current Institute of Engineering and Technology (IET) Code of Practice for Electric Vehicle Charging Equipment Installation, the most relevant Regulations in



User's Manual of EKEC series AC electric vehicle charging pile

Remove the charging gun head cable from the charging pile and correctly insert it into the AC charging terminal block (cable version) on the vehicle end. Or plug one end of the charging gun cord into the

Charging Pile Installation Manual , PDF ,



Power Supply

The user's manual provides detailed installation instructions for a wall-mounted and column-type charging pile, including safety precautions and wiring guidelines.



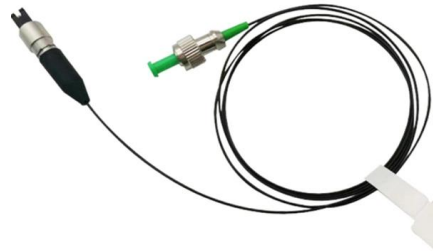
Understanding the Charging Pile: The Future of Electric

A charging pile is the basic component of an electric power infrastructure that allows electricity to flow to the vehicle.



User's Manual of EKEC series AC electric vehicle charging pile

This product is a single or three-phase AC charging pile, which is mainly used for AC charging of electric vehicles. The equipment adopts industrial design principles.



The Essential Guide to Charging Piles for Electric Vehicles in China

As of 2024, the number of charging piles in China has skyrocketed to over 11 million units, reflecting the country's commitment to supporting its growing fleet of new energy vehicles



Installation Manual

Step1: Determine the installation position using the base(the reserved cable hole is right below the column). Step 2: Put the reserved cable through the cable hole of the column. Step 3: Install the



The IET Code of Practice for Electric Vehicle Charging

The IET Code of Practice for Electric Vehicle Charging Equipment Installation, 4th Edition By: EUR ING Graham Kenyon CEng MIET, Managing Director, G Kenyon

electricalwikipedia.wordpress

electricalwikipedia.wordpress



DC CHARGING STATIONS GUIDE: SELECTION, INSTALLATION

DC CHARGING STATIONS GUIDE: SELECTION, INSTALLATION & OPERATION INTRODUCTION
Fast electric vehicle (EV) charging possibilities will become essential if we want EVs to finally make

Operation instruction for AC Charging Pile



This instruction mainly introduces part features, composition, installation, commissioning, operation and maintenance of BHZD AC Charging Pile. Please read this instruction carefully before use and

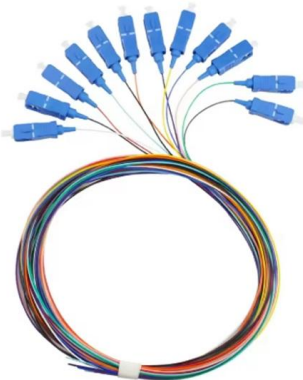


40kW DC Charger User Manual

40KW DC Charging Pile Manual - Free download as PDF File (.pdf), Text File (.txt) or read online for free. This document provides instructions for safely using a

Charging pile

Do not use the direct current charging pile which has been damaged or has faulty parts. The vehicle connector must not be placed randomly. The plug shall be inserted back to the protective



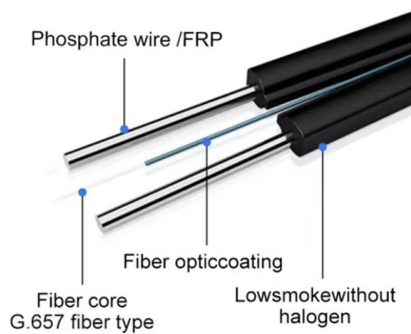
DC Charging Pile Electrical Configuration and

A DC charging pile production line encompasses assembly machinery for component placement, automated robots for precision tasks, electrical testers for verifying



Electric vehicle AC charging pile Product user manual

Dropped charging posts can be installed directly even if they are not damaged in appearance, and must be checked by a professional to determine if they can be installed.



Research Review on Power Quality Improvement in Distribution

Then, the key technologies and potential of charging piles in power quality management are summarized, focusing on the technical progress in harmonic suppression and voltage regulation.

Charging pile protection box, Wall Mounting Distribution Box products

China Charging pile protection box, Wall Mounting Distribution Box, Stainless Steel Enclosure, offered by China manufacturer & supplier -Zhejiang B& J Electrical Co., Ltd., page1



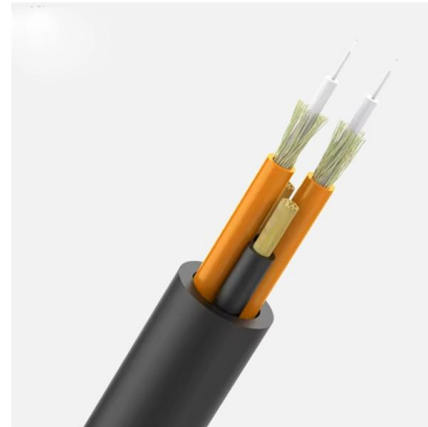
Charging Pile: The Ultimate Guide to EV Charging

Understanding the different types of chargers, installation requirements, and future technologies will empower you to make informed



Amazon : Outdoor Steel Electrical Equipment Enclosure Box

Use: Can be used as electric vehicle charger protection box, distribution box, electrical box, electronic equipment housing box The electrical box is made of cold-rolled steel plate, the surface is painted,



Guide to Electric Vehicle Charging Pile Installation

Complete guide to electric vehicle charging pile installation, covering planning, layout, equipment selection, electrical design, and maintenance.

DC Fast-Charging Pile Assembly Process

Standard Operating Procedure (SOP)DC Fast-Charging Pile (DC Charging Station) Assembly Process 1. Scope Applicable to the series production of integrated DC



Installation Manual

1.1 Summarize Poros WS-32-E3 AC charging pile is independently developed and produced by AEG adopts industrial-grade high-performance ARM C architecture processor and can be equipped with



Charging pile installation and main matters

Plan the installation location of charging equipment. It is recommended to install it near the power distribution room. A distance of at least 1 meter should be left in



Contact Us

For datasheets, pricing, or custom high-speed optical interconnect solutions, please visit:
<https://www.syropy.com.pl>