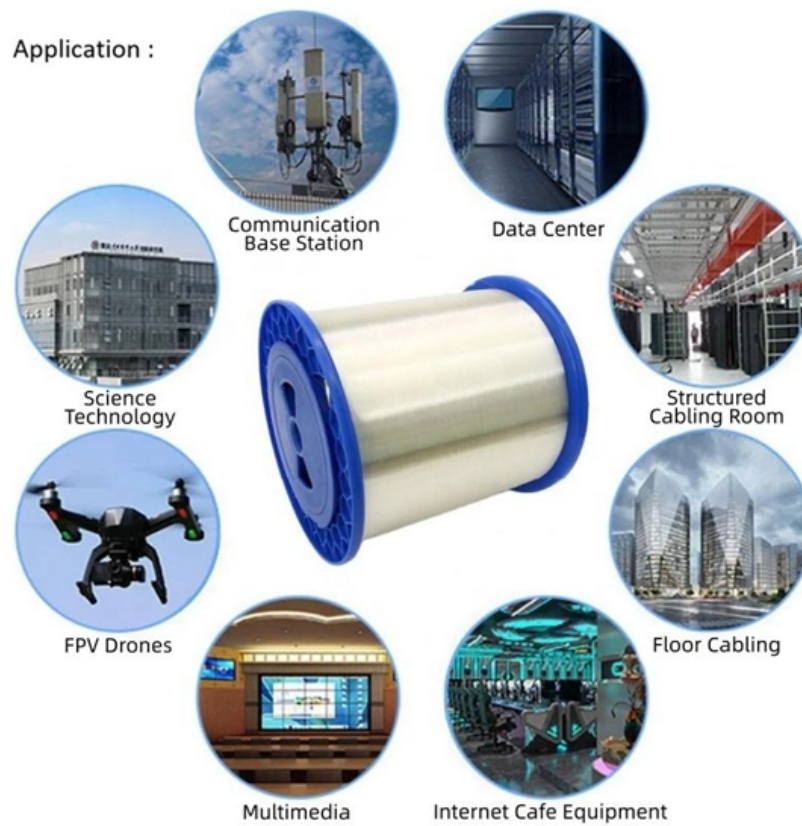


Installation of seismic-resistant supports for air duct cable trays





Overview

Seismic braces can be flexible using aircraft quality cables, or rigid (solid) using steel sections such as pipe, angles, or strut channels. Braces are typically installed 30-40 ft (10-13 m) apart, at system turns and at the end of runs. Suspended systems such as piping, equipment and ductwork need seismic braces to keep them from swaying during an earthquake. Our strong legacy includes OSHPD OPA and OPM approvals, Structural Engineer approvals, and compliance with International Building.



Installation of seismic-resistant supports for air duct cable trays



Seismic MEP Solutions , Eaton

Seismic engineering services to help customers from pre-bid to inspection walk-through Full portfolio of seismic bracing solutions and support systems Cable tray Strut systems Pipe hangers Vibration

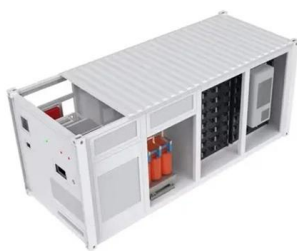
Seismic Proof Systems

This document covers the rules of longitudinal, transversal and 4-dimensional bracing, seismic retrofitting and calculation methods using Sikla products,



KINETICS(TM) Pipe & Duct Seismic Application Manu

11.5 - Typical Seismic Restraint Arrangements for Single Clevis Hung Pipe: In this section the basic installation arrangements for pipe and duct will be discussed. This is by no means a



KINETICS(TM) Seismic & Wind Design Manual Section

When subjected to an earthquake, ductwork must resist lateral and axial buckling forces, and the restraint components for these systems must resist pullout and localized structural failures.

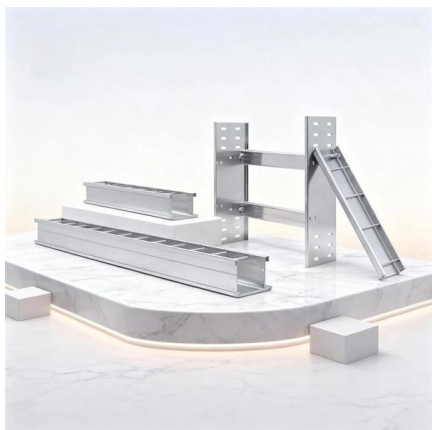
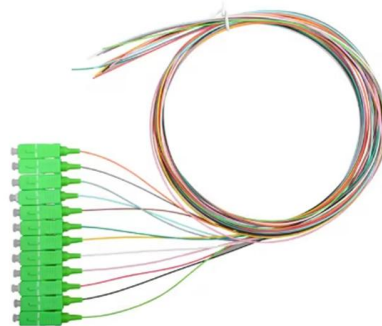


Seismic Restraint Systems Installation, Guide & Equipment

Resistoflex detailing how seismic restraint systems safeguard structures during earthquakes. Learn how our advanced solutions enhance safety and minimize damage.

KINETICS(TM) Pipe & Duct Seismic Application Manu

Transverse seismic restraints (T): These act to prevent the pipe or duct from swinging side-to-side. They are normally placed perpendicular to the pipe or duct. The word lateral is often used for transverse



Seismic Ductwork Support Guidelines , PDF , Duct

The document provides examples of damage to unbraced ducts from past earthquakes. It recommends following standards like FEMA 414 for installing



INSTALLING SEISMIC RESTRAINTS FOR DUCT AND PIPE

This guide shows installers how to attach ducts, pipes, and associated equipment to a building to minimize earthquake damage. Many attachment examples and arrangements are presented,

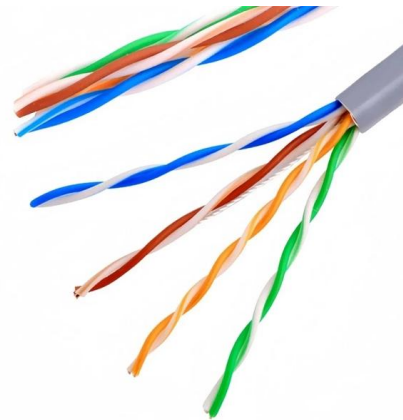


Seismic MEP Solutions , Eaton

First, lateral braces, also called transverse braces, are installed across or perpendicular to the system. Second, longitudinal braces are installed parallel to the system. Seismic bracing also uses rod

Seismic Bracing for Ductwork, HVAC, Electrical & Pipe

When ductwork, electrical conduits, and piping are hung from the ceiling (whether by rods or trapeze supports), seismic bracing is used to resist



Length:40mm
Small-end inner diameter:2.0mm
Large-end inner diameter:4.3mm
Outer diameter:6.7mm



What Sheet Metal Contractors Need to Know About

It's looking at all aspects of seismic restraint systems, including supports, anchors and things of that nature, making sure that you don't have



Roof Duct Supports For Seismic Activity and Heavy Winds

Our Rooftop Support Systems (RTS) division offers a unique line of roof duct supports that can be used where seismic issues and high wind loads

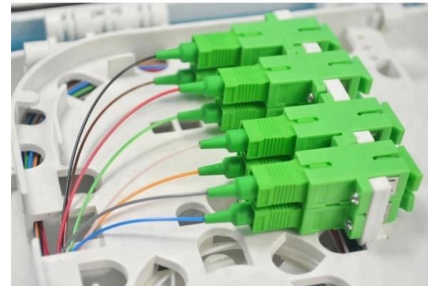


Mechanical, Electrical and Plumbing Seismic Bracing Systems

From design to construction to inspection, the nVent CADDY team makes seismic simple by walking you through the full process for applications including Mechanical, HVAC, Electrical, Plumbing and Fire

INSTALLING SEISMIC RESTRAINTS FOR DUCT AND PIPE

Bracing Details and Installation: Organized by duct and pipe components. Gives instructions on installing bracing in many different arrangements. Attachments: Contains instructions on attaching suspended



KINETICS(TM) Pipe & Duct Seismic Application Manu

Strap cables, either individually or in bundles, to the cable tray at a spacing equal to one half the support spacing to spread the seismic loads evenly to all restraint points.



SMACNA Releases Major Updates to Seismic Restraint

SMACNA has released significant updates to two of its key industry manuals: the Seismic Restraint Manual: Guidelines for Mechanical Systems, 4th

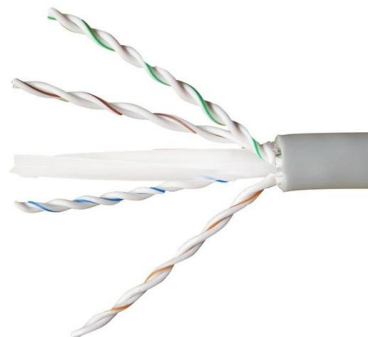


SEISMIC S E I

- Installation of seismic restraints should not cause any change of position of equipment, piping or ductwork, resulting in stresses or misalignment.
- No rigid connections between equipment and the

Seismic Bracing Installation Best Practices: Strut

A rigid seismic bracing system is the recommended prefabricated or retrofitted solution, with lateral bracing eliminating the need for multiple trips up



Seismic Cable Restraint Kits

The Easy ex EFSCK Series Seismic Cable Restraint Kits are engineered to secure suspended non-structural components--such as ductwork, piping, conduit, cable trays, and HVAC



Seismic Design Manual , PDF , Duct (Flow) , Hvac

Seismic Forces Acting on Conduit and Cable Trays (D9.1) This section provides a brief overview of the forces encountered by

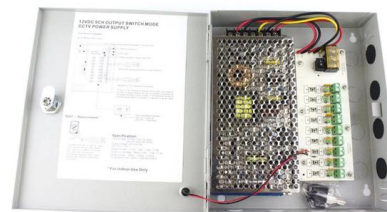


Wind & Seismic Bracing for Piping

Our Roof Pipe Supports and Roof Duct Supports are built for job sites where wind bracing and seismic bracing are required. These systems support piping, HVAC

INSTALLING SEISMIC RESTRAINTS FOR DUCT AND PIPE

INSTALLING SEISMIC RESTRAINTS FOR DUCT AND PIPE Notice: This guide was prepared by the Vibration Isolation and Seismic Control Manufacturers Association (VISCMA) under a cooperative



Seismic Support and Hanger Solutions

By integrating load mechanics and seismic action calculations, these systems anchor pipelines, ducts, cable trays, and equipment to pre-reinforced



Annex I

This document deals with cables trays, cables and connector installation and segregation, cable trays earthing and E.M.C. directives. These rules shall be applied in the cabling engineering workflow for



Seismic Bracing Cables & Hangers , Gripple

Gripple Seismic Bracing systems are specifically designed and engineered to brace and secure suspended non-structural equipment (VAV boxes, fans, unit heaters,

UNISTRUT Seismic Bracing Solutions

Requirement: Each straight run requires a minimum of (2) transverse braces and (1) longitudinal brace.



Ductwork and Piping Supports for Seismic Restraint

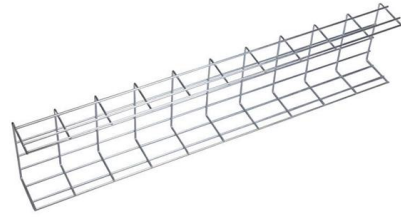
Proper design and installation of ductwork and piping supports are critical components of seismic restraint systems. Support systems must resist both gravity loads and seismic forces while

KINETICS(TM) Pipe & Duct Seismic



Application Manu

Table S1-3 below will show the seismic restraint requirements for each length of pipe or duct, and then list which seismic restraint locations will fulfill those requirements.



Contact Us

For datasheets, pricing, or custom high-speed optical interconnect solutions, please visit:
<https://www.syropy.com.pl>