

Installation of lightning protection for indoor distribution boxes





Overview

This Recommendation provides guidance on protecting indoor distribution systems for mobile communication in large-scale buildings from lightning and safety risks. It emphasizes compliance with standards like IEC 62305-3, IEC 62305-4, IEC 60364 series, and ITU-T K. OBO Bettermann is one of the world's most experienced manufacturers of lightning and surge protection systems. While the NFPA administers the process and establishes rules to promote fairness in the. Lightning and surge protection may only be installed, put into operation and maintained by qualified electricians who are familiar with national and international laws, regulations and standards.



Installation of lightning protection for indoor distribution boxes



The Complete Guide to Distribution Box: Installation, Types & More

Making Smart Electrical Infrastructure Decisions
Distribution boxes form the foundation of safe and reliable electrical systems. Understanding their components, installation requirements, and

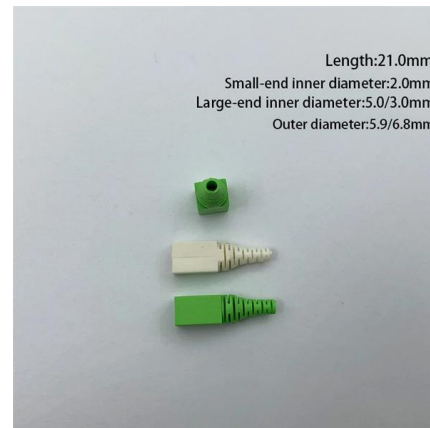


How to Choose a House Distribution Box , CHINT global

Importance: Ensures the distribution box remains functional in damp or wet conditions. Standards and Ratings: Look for IP (Ingress Protection) ratings,

1.An Ultimate Guide for Metal Distribution Boxes

1) Metal Distribution Boxes Constructed from steel, aluminum, or cast iron, metal distribution boxes are highly durable and resistant to mechanical damage. Ideal



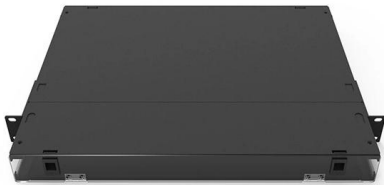
LPI-175 / 2023 Edition

The National Fire Protection Assoc. (NFPA) publishes document # 780 titled Standard for the Installation of Lightning Protection Systems, an ANSI Standard, considered the national design guide for



Requirements And Specifications For Installation Of

A leakage protector should be installed in the distribution box to provide additional safety protection. Installation requirements in special



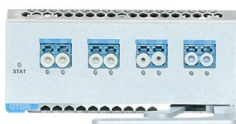
How to install SPD (Surge Protection Devices) at per IS 732??

Are you spending too much time installing Surge Protection Devices (SPD)? In this quick, step-by-step video, you'll learn how to install SPDs faster and safely.



Recommendation ITU-T K.158 (07/2025)

This Recommendation provides guidance on protecting indoor distribution systems for mobile communication in large-scale buildings from lightning and safety risks.





Lightning protection system installation , INGESCO

Lightning protection installation according the standard UNE 21186:2011. Basic guide for external lightning protection installation.



High-Quality Electrical Lighting Distribution Boxes Explained

High-quality distribution boxes, like the FPD-85/3L model, offer several key features that set them apart: - Insulation and Waterproofing: Premium distribution boxes are fabricated using one-piece injection

Distribution box surge protector: an important part of lightning

In areas with frequent lightning strikes, electrical equipment is easily damaged by lightning strikes. To reduce the damage caused by lightning strikes, the surge protector in the



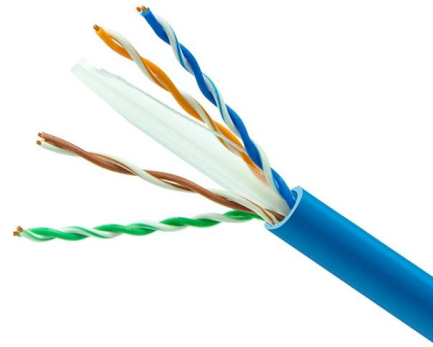
Standard for the Installation of Lightning Protection Systems

1.1.2* This document shall address lightning protection of the structure but not the equipment or installation requirements for electric generating, transmission, and distribution systems except as



How to Install a Cable Distribution Box Safely and

In modern electrical systems, cable distribution boxes (also known as electrical distribution boxes or distribution boxes) play a crucial role as the key

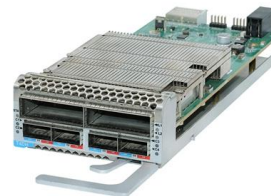


Power Distribution Boxes Explained Simply

Bus bars and internal wiring help distribute electricity to each connected circuit efficiently. The box keeps everything safe by balancing the load,

Lightning protection guide

Just like its predecessors, this edition of the lightning protection guide offers assistance in installing professional lightning protection systems in line with the very latest standards.



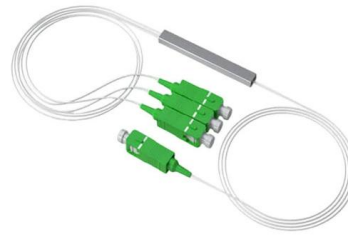
Method Statement Installation Of Lightning Protection System

The correct materials shall be ascertained from approved shop drawings and material submittals before installation. The installation of the lightning protection will be as per approved shop drawings and as



NFPA 780, Standard for the Installation of Lightning Protection Systems

It includes detailed provisions of protection methods, devices, and safety challenges in lightning protection systems. NFPA 780 also delivers a flexible approach to providing applicable safety



Installation information and requirements

Lightning and surge protection may only be installed, put into operation and maintained by qualified electricians who are familiar with national and international laws, regulations and standards. Among

LIGHTNING PROTECTION AND GROUNDING

CONSTRUCTION NOTE(s): Connect the arrester ground lead before connecting the arrester to the line. Install wildlife guards on line terminals of all line arresters. Do not reconnect arresters with a blown



Installing and Maintaining Lightning Protection Systems

Conclusion Installing and maintaining lightning protection systems in the electric power transmission, control, and distribution industry is a multifaceted challenge that goes beyond physical installation. It



Quality Control for Installation and Construction of Electrical Riser

Master the key quality control methods for electrical riser & distribution box installation. Ensure safety, compliance, and prevent hazards in building electrical systems.



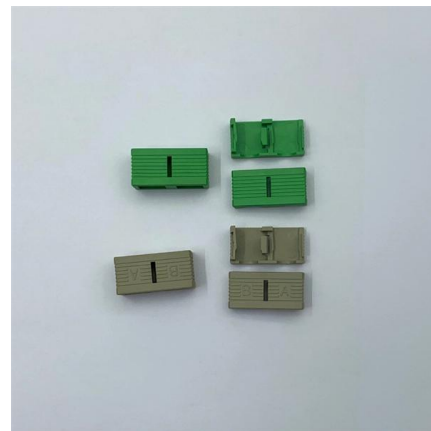
Distribution Box Guide: Types, Components & Solutions

Flush-mounted Distribution Boxes: Embedded within walls, providing a cleaner look for indoor installations, often seen in modern homes and offices.



TECHNICAL HANDBOOK

This handbook is written to assist in the understanding of the IEC 62305 series of lightning protection standards. This guide simplifies and summarizes the key points of the standards for typical



Product Catalog



How to install lightning arrester on building?

Step-by-step guide to installing Lightning Arresters for building & protection against lightning. Read Axis Electricals' blog to learn more.



Understanding the Function and Installation Method of Surge

They are typically installed in distribution rooms, distribution cabinets, AC distribution boards, switch boxes, and at the power input of other critical or vulnerable equipment to protect them from



Installation information and requirements

What are the installation instructions and requirements? Lightning and surge protection may only be installed, put into operation and maintained by qualified electricians who are familiar with national



Recommendation ITU-T K.158 (07/2025)

This Recommendation provides guidance on protecting indoor distribution systems for mobile communication in large-scale buildings from lightning and safety risks.



Best Practices in Distribution System Surge Protection

Best Practices in Distribution System Surge Protection by Jonathan Woodworth As demand for more reliable power continues to grow worldwide,





Installing Lightning Protection

Application Assistance Selecting and Installing Lightning Protection Devices The primary goal in any lightning protection system is to control the massive energy generated during a lightning strike so it



Contact Us

For datasheets, pricing, or custom high-speed optical interconnect solutions, please visit:
<https://www.syropy.com.pl>