

Installation of cable trays at 90° bends





Installation of cable trays at 90° bends



Cable Tray Technical Guide A practical guide to product selection and installation

A practical guide to product selection and installation This guide for engineers and installers has been developed by ABB as a practical reference regarding cable tray characteristics, installation, and

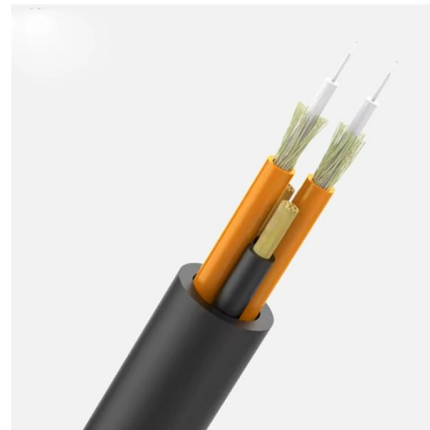


Guide to cable support systems

Widths of 8 and 15 millimetres enable flexible adjustment to different cable trays, cable ladders and cable volumes. With the help of the matching SBV tightening strap locks and 576 spring chuck, the

GUIDE CABLE TRAYS TECHNICAL

If it has excellent electrical continuity and is integrated in the installation's equipotential bonding system, a metal cable tray reduces the coupling's impact and thus contributes to good EMC of the electrical



Best Practice Guide to Cable Ladder and Cable Tray Systems

Introduction This publication is intended as a practical guide for the proper and safe* installation of cable ladder systems, cable tray systems, channel support systems and associated supports.



A Guide to Installing and Supporting Electrical Cable Trays

This guide covers the critical steps, from selecting the right electrical cable tray and performing accurate cable fill calculations to managing a safe cable pull through



A Guide to Installing and Supporting Electrical Cable Trays

A professional guide to installing electrical cable tray systems per NEC Article 392. Covers support, securing cables, and fill calculations.



CableTray Book English

The flexible coupler provides easy installation without measuring and cutting cable tray side rails. Once installed, the coupler allows for electrical continuity, therefore eliminating the requirement for a



Cable Support Systems

With PKP-KO 0-90° adjustable bend you can easily create up to 90° bend on your cable trays path. Check out in the video, how to properly install adjustable b



Cable Tray manufacturer in Pakistan , At Alfazal Industry

Alfazal Engineering Industry, Cable Tray manufacturer in Pakistan, provides superior cable trays. Their expertly designed cable management.

Vertical bends, screw connection , OBO

Fittings, cable trays, screw connection - Vertical bends, screw connection.



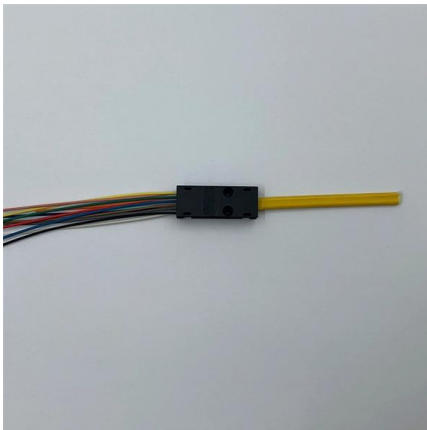
Cable Trays Catalog

NL8530012 12" Wide 1 90° Short Radius Bends
200 mm (8") Wide Cable Trays Required
Accessories



Bending Cable Tray

Bending Cable Tray - NO Fancy Tools Required
Students trading aid on how best to put an internal 90 degrees bend in steel cable tray.
Includes a full demonstration on how bend steel cable tray using a crimping to.



90° Cable Tray Bend Installation Guide

Kable Kontrol Cable Tray 90 Degree Short Bend Instructions - Free download as PDF File (.pdf), Text File (.txt) or read online for free. The document provides

Cable Tray Technical Guide A practical guide to product selection and

Cable tray length is selected based on the load to be supported, the distance between the supports (also referred to as the span), and handling and installation constraints.



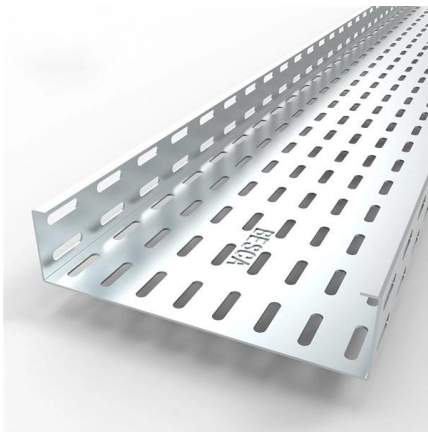
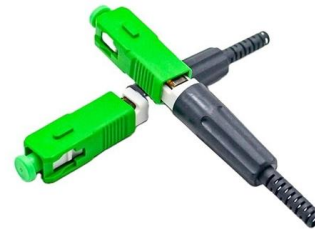
90° Cable Tray Bend Installation Guide

The document provides instructions for the installation of 90° short radius bends for wire mesh cable trays in various widths (4", 6", and 12"). It lists the required



(Uk) Not really allowed to do self made 90 degree bends

(Uk) Not really allowed to do self made 90 degree bends in tray nowadays, but if you've no choice, make it look as good as a pre made bend



Installation Guide

This Installation guide covers the most popular and standard installation questions that may come up. If you have any further questions, please contact our sales team at 888-4WB TRAY for assistance.

Make a 90 Bend in Electrical Cable Tray

The Easy Guide to How to make a 90 electrical cable tray bend to measurement of your choice. Great if you are new or just forgot how to do it, this easy



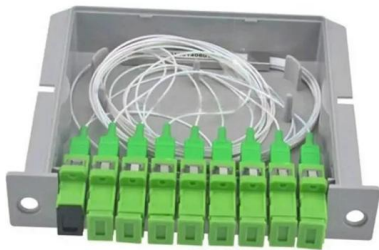
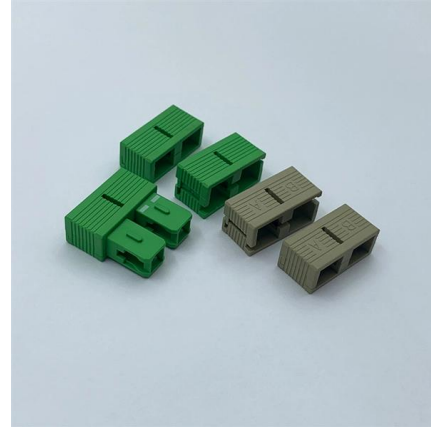
Cablofil FASLOCKXLS6 316L Stainless Steel Wire Cable Tray Bend

316L stainless steel bend connector for rapid joining of wire mesh cable trays. Horizontal hinged joint supports flexible routing for 300-600 mm trays, delivering high corrosion resistance and halogen free



Foundation Fieldbus Installation Best Practices (2025)

Learn FOUNDATION Fieldbus installation best practices, cable selection, grounding, and maintenance with a downloadable checklist for EPC

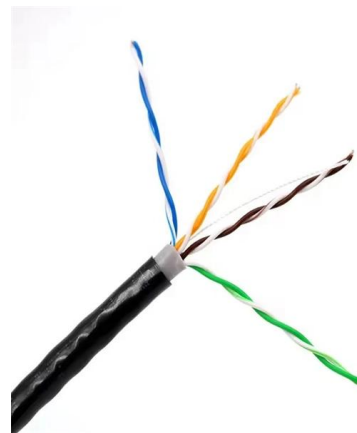


Cable Trays Catalog

CABLE TRAY CUTTING & BENDING GUIDES
CONFIGURING CABLE TRAYS FOR INSTALLATION
90° Short Radius Bends 4" and 6" Wide Cable Trays

Method Statement installation of Cable Trays and Ladders

This method statement covers the site installation of the cable tray & ladders and the requirements of checks to be carried out.



How to construct a flat 90° bend for Cable Trays

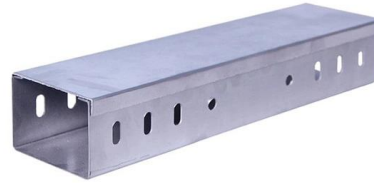
The gusset is produced by cutting a piece of tray to the required size, removing 1 lip completely and bolting it to the 90° bend (H). This completes the





Level 2 EFK Manual

204: Installation of wiring systems and enclosures Worksheet 4-030: Forming an internal 90° bend in cable tray NB: Students must not attempt this exercise before the correct use of all tools and



Contact Us

For datasheets, pricing, or custom high-speed optical interconnect solutions, please visit:
<https://www.syropy.com.pl>