

Installation of Low-Voltage Metering Distribution Boxes in the UK





Installation of Low-Voltage Metering Distribution Boxes in the UK



ENWL EPD Template Version 8

SCOPE This document describes the general distribution network design principles, at low voltage, which shall be used by staff of Electricity North West as service provider and any Independent

ENGINEERING SPECIFICATION EE SPEC: 28/7 Low Voltage Intake Metering

Policy Summary This Technical Specification specifies requirements for Low Voltage Intake Metering Panels rated at 800A, 1250 and 1600A that provide a point of metering, isolation and protection at



INA Low Voltage Design ETSC-DES-001 Standard

The purpose of this document is to provide a standard for the design and planning of new Low Voltage (LV) networks and covers the LV design criteria for electricity networks to be adopted by

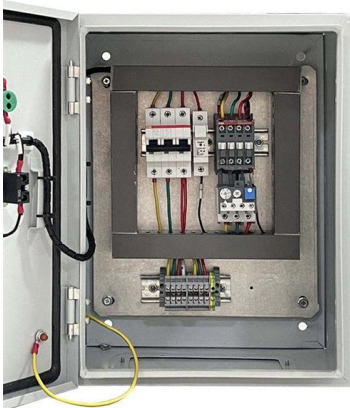
Electrical Equipment (Safety) Regulations 2016: Great

The Electrical Equipment (Safety) Regulations 2016 implemented EU Directive (2014/35/EU) on electrical equipment designed for use within certain



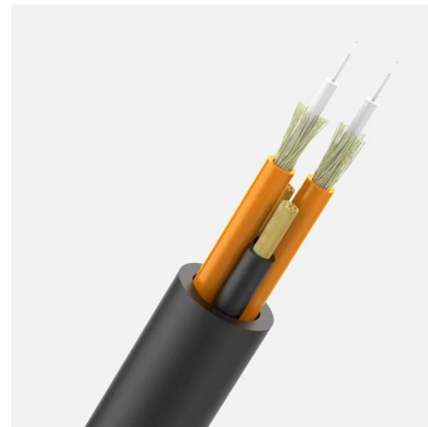
Guidance on equipment in meter boxes

Electrical equipment associated with the consumer's electrical installation is increasingly being found within the meter cabinet of domestic and



The Consumer Power Substation With Metering On

The single line diagram and the layout of a substation with MV metering depend on the complexity of the installation and the presence of



LOW VOLTAGE INSTALLATIONS

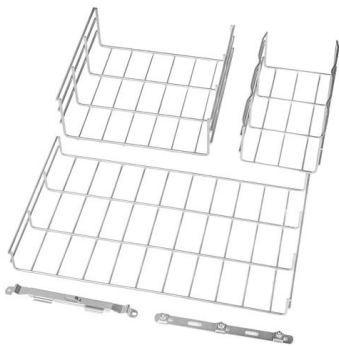
At Power Distribution Specialists, we have extensive experience in providing low voltage installation services that ensure efficiency, reliability, and peace of mind for our clients.





LOW VOLTAGE INSTALLATIONS

Providing low voltage installations and services that ensure efficiency, reliability, and peace of mind for our clients.

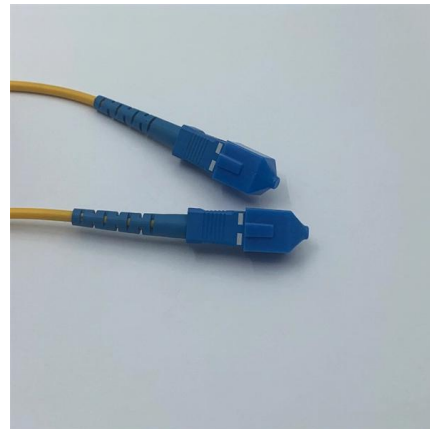


Specification for the Installation of Low Voltage CAB-03-032 Internal

For new build installations - metering is the responsibility of the meter operator appointed by the customer's supplier and shall be installed in accordance with section 6 of ENA ER G87.

technical guidance for developers domestic electricity

Please remember we are a heavily regulated industry, and the instructions in this document need to be followed in order for the installation of your network to go smoothly and safely.



Code of Practice 10: The Metering of Energy via Low Voltage Circuits

This Code of Practice specifically applies to metering of energy via low voltage circuits for Settlement purposes. Metering Equipment compliant with this Code of Practice can be traded either Half Hourly



INA Low Voltage Design ETSC-DES-001 Standard

1. Purpose The purpose of this document is to provide a standard for the design and planning of new Low Voltage (LV) networks and covers the LV design criteria for electricity networks for new homes



Difference Between High and Low Voltage Distribution

Explore the difference between high voltage and low voltage distribution system setups and how Serconnect supports your electrical infrastructure needs.

Metering

Metering licence conditions and guidance Find standard licence conditions and guidance related to consumer protection. Licence condition numbers refer to the electricity supply licence and



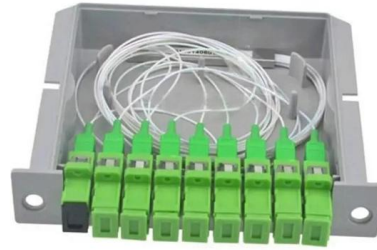
GTC Technical Guidelines

The fitting of external meter boxes and the installation of externally fitted hockey sticks is the responsibility of the Developer and must comply with the manufacturer's specifications and comply



Low-voltage distribution networks

In cities and large towns, standardized LV distribution cables form a network through link boxes. Some links are removed, so that each (fused) distributor leaving a substation forms a branched open-ended



Functions of a substation with LV metering

A substation with LV metering may include one single emergency generator connected at low voltage level on the main LV distribution switchboard. The generator may be sized either for the

Guidance on installing equipment within meter enclosures , NICEIC

The experts at NICEIC provide more detail on the installation of equipment in meter boxes. Electrical equipment associated with the consumer's electrical installation is increasingly



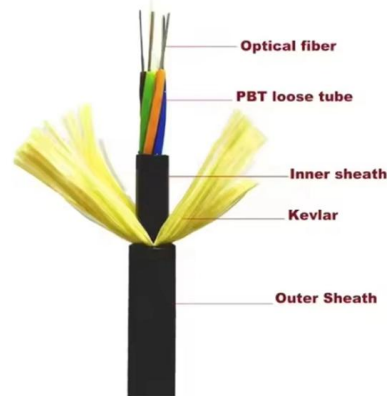
Low Voltage (230V and 400V) and Reduced Low Voltage (110V)

In addition to our stock range of Low Voltage (230V and 400V) and Reduced Low Voltage (110V) distribution equipment, we also design and manufacture to client and application specific requirements.



UK Power Distribution

A range of LV service arrangements and different types of cable may be encountered across UK Power Distribution networks. This standard defines the installation of new large LV services and alterations



LV Electrical Installation - LME - Lloyd Morris Electrical

Comprehensive Electrical installation within all Industry Sectors, Industrial, Commercial and Utilities, and with our fully qualified and in house Site Teams we

Smart Meter Guidance for Domestic New Builds

2.6 For new build premises it is no longer regarded as acceptable for gas meters to be located in semi-concealed meter boxes - these have the potential to fill with water, and cause communications and



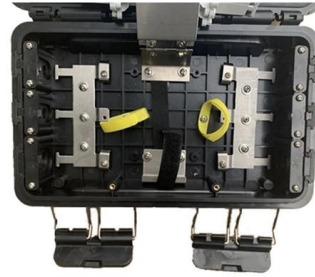
Understanding and working with the UK's energy metering

GIL65 gives specific recommendations for plant and equipment for which separate metering should be provided as for motor control centres feeding pumps and fan loads greater than



CoP Metering Cabinet Installation , Custom Energy

CoP meter cabinet installation for premises where a new connection (high or low voltage) is required. CoP 2, 3 and 5 compliant cabinets with wiring and commissioning.



Low-voltage distribution networks

In cities and large towns, standardized LV distribution cables form a network through link boxes. Some links are removed, so that each (fused) distributor leaving a substation forms a

Contact Us

For datasheets, pricing, or custom high-speed optical interconnect solutions, please visit:
<https://www.syropy.com.pl>