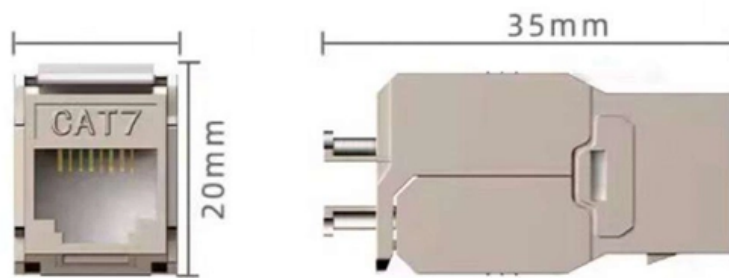


# Installation of Lightweight Concrete Cable Trays







### Cable Tray Technical Guide A practical guide to product selection and

A practical guide to product selection and installation This guide for engineers and installers has been developed by ABB as a practical reference regarding cable tray characteristics, installation, and

### Method Statement installation of Cable Trays and Ladders

This method statement covers the site installation of the cable tray & ladders and the requirements of checks to be carried out.



### DATA ADJUSTABLE, EASY TO USE



SET INCREASE DECREASE POWER SWITCH

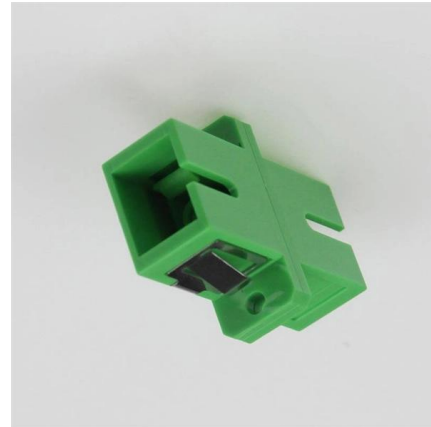
### Reinforced concrete cable trays: dimensions, application

Reinforced concrete cable trays are used in the process of constructing thermal routes, laying utility networks, installing hydraulic facilities, sewer lines, tunnels, etc. The trays are a U-shaped concrete



## Concrete Cable Trough , Cable Troughing , Anderton

Concrete cable troughs manufactured by Anderton are designed to provide permanent cable protection with easy access for cable jointing, repair and cable



## Best practice guide to cable ladder and cable tray

Cable ladder and cable tray systems The following recommendations are intended to be a practical guide to ensure the safe and proper installation of

## Technical Guidelines for Cable Tray Installation and

1. Route Planning and Layout Principles  
Coordinate with Building Structure: Cable tray routing should align with architectural design, avoiding unnecessary



## Unlocking Efficiency: A Beginner's Guide to Light Duty Cable Trays

Dive into the world of light-duty cable trays with our comprehensive guide. Learn the essentials of design, installation, and maintenance, empowering beginners to optimize cable



## DIY Installation: Mastering Light Duty Cable Tray Setup

Explore our comprehensive DIY guide to master the installation of light-duty cable trays. From planning to cable organization, follow step-by-step instructions for a tidy and efficient cable

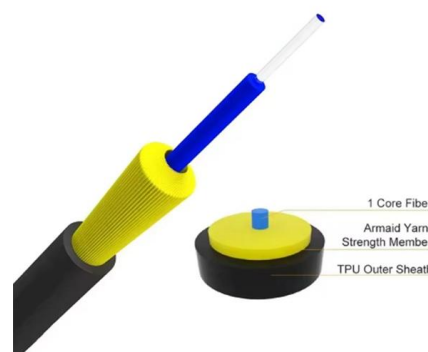


### CABLE TRAYS GENERAL INFORMATION AND

Cable tray systems are to be installed so they are accessible. If possible 300mm minimum should be left above or between installed systems to allow for cable

### Beama Best Practice Guide , Installation Of The System , Cable

The following recommendations are intended to be a practical guide to ensure the safe and proper installation of cable ladder and cable tray systems and channel support and other support systems.



### Cable Tray Installation

Learn everything about cable tray installation with our complete guide. Discover types, steps, and safety tips for efficient electrical cable management.



## Cable Tray and Conduit Installation Method Statement

Step-by-step cable tray and conduit installation method with safety, quality and inspection procedures as per IEEE standards.



### Cable Tray Installation

Whether you're building a commercial setup or upgrading an industrial plant, proper cable tray installation ensures neat wiring, safe access, and easy maintenance. But before you lay the first tray

### Cable Tray Installation Method Statement , PDF

This document provides a method statement for installing cable trays and junction boxes concealed inside concrete at an integrated vinyl plant in Nizhny Novgorod,



### INSTALLATION GUIDE

The ladder tray system must be complete before the cable/conductors are installed. The ladder tray system must be free of any hazards, which will interfere with the cable's install.



## Cable Tray Technical Guide A practical guide to product selection and

Cable tray length is selected based on the load to be supported, the distance between the supports (also referred to as the span), and handling and installation constraints.

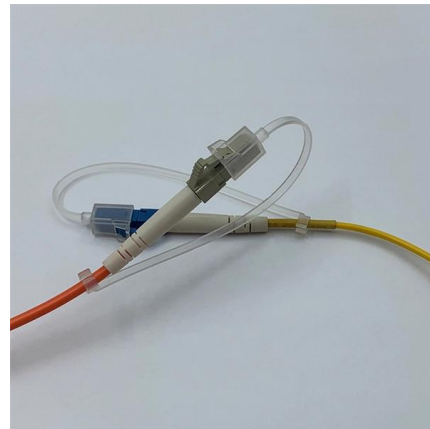


### Mastering Cable Organization: A Guide to Light Duty Cable Trays in

These trays are designed for accessibility, allowing easy maintenance and modifications. Features such as pre-drilled holes and quick-connect systems simplify cable management,

### 5 Steps to Learn How to Install Cable Trays

Installing a cable tray system requires careful planning to ensure it can support the weight of the cables and adheres to electrical safety codes. Here



### CABLE

Cable ladder is more commonly used where heavier cables need to be carried, but is more expensive. Apart from the choice between solid or perforated cable tray and wire basket, as Rendell



## How to Install Cable Tray: A Comprehensive Guide to Different Cable

Welcome to our step-by-step guide on installing cable trays! In this video, we'll explore the different types of cable trays available and provide detailed instructions for their installation.



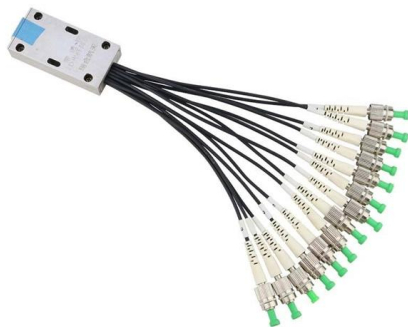
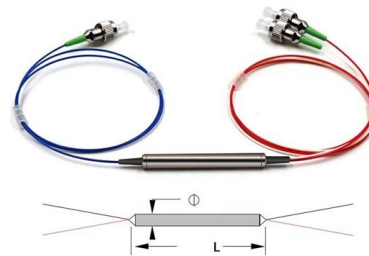
### Cable Trough

With consistent dimensions, strong lids, and fast installation, our systems offer a reliable way to route and safeguard cables on any project where durability and accessibility matter.



### Cable Tray Installation Procedure Guide

This document provides procedures for installing cable trays according to international standards. It describes inspecting and storing cable trays upon



### CABLE TRAYS GENERAL INFORMATION AND

General information of Kiraç Metal Cable Trays and installation guide are arranged in accordance with IEC 61537 standards and this document has been prepared for



## Cable Trough

Rail and light-rail projects Telecoms, fibre-optic and data networks General industrial and domestic service routes With consistent dimensions, strong lids, and fast



## Contact Us

---

For datasheets, pricing, or custom high-speed optical interconnect solutions, please visit:

<https://www.syropy.com.pl>