

Installation of Intelligent Power Distribution Cabinet Bracket





Installation of Intelligent Power Distribution Cabinet Bracket



Ausrack Power Rails & Intelligent PDU's

The Intelligent Power Distribution Unit sits within the rack continually looking for threats from electrical circuit overloads, and any physical or environmental conditions which might place critical IT

Power Distribution Unit (PDU) Installation Guide

The Keysight E7685A PDU Installation Kit enables you to mount an Keysight Power Distribution Unit (PDU) in an Keysight instrument rack. This kit is required if the rack is not already equipped with a



Choosing the Right Power Distribution Cabinet for Your Electrical Needs

Discover the importance of selecting the right power distribution cabinet for system reliability, efficiency, and compliance with industry standards. Learn about critical features, material

Eaton G4 Rack PDU Installation and Setup Guide

All 0U Eaton Enclosure Power Distribution Unit (Rack PDU) G4 models are mounted vertically inside rack structures. Use the information in this chapter to prepare, install, and connect the Rack PDU



Power Distribution Unit Installation

Install the vertical mounting brackets on the top and bottom of the PDU by using M4*8 countersunk screws. Install four cage-nuts from top to bottom. Insert M6*12 roundhead screws into the waist holes



Quick-Install Bracket Design of Smart PDUs: Single-Person 10-Minute

Install a Smart Power Distribution Unit in 10 minutes with a quick-install bracket, enabling single-person side-mount deployment and efficient power management.



Intelligent precision power distribution system

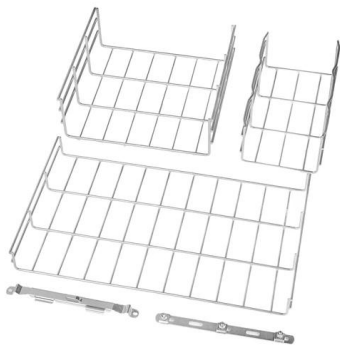
Overview: PLS-DP series of intelligent precision power distribution Cabinet series products include: power, UPS input, output, counter, three varieties of Cabinet. It is not just a distribution Cabinet,





PDU48/300DUI Intelligent DCDC Power Subrack Installation

To ensure the smooth operation, please read this manual carefully before installing and operating the PDU48/300DUI intelligent DCDC power subrack (power subrack for short).



V00028DT_04.pdf

Install the positioning screw first to help locate the bracket in the correct location and orientation relative to the cabinet frame. See page 3 for bracket and screw installation instructions.

G5 Intelligent Power Distribution Units (iPDUs)

OVERVIEW The G5 iPDU shall monitor the data center power and environment (at the rack or cabinet level), by continuously scanning for electrical circuit overloads, and physical environmental



EL2P Intelligent Power Distribution Unit

Industrial IT In factories and industrial environments, EL2P supports network reliability by delivering intelligent power to control systems, automation cabinets,



Intelligent Universal Socket Cabinet Installation PDU for

AZE 1U Horizontal Intelligent Rack PDU, Metered-by-outlet with switching, 16A, (8) C13 Outlet-RPNETH11-08C13 AZE Intelligent Rack Power Distribution Unit



Elecnova: Electrical Power Distribution Cabinet, Pdu For Network

The Power Distribution Cabinet is a versatile solution designed to efficiently distribute electrical power within various settings. This cabinet integrates components such as circuit breakers, transformers,

Power Distribution & PDUs

Power Distribution and PDUs Our in-cabinet-mounted Power Distribution Units (PDUs) are manufactured from high-quality components to support all your

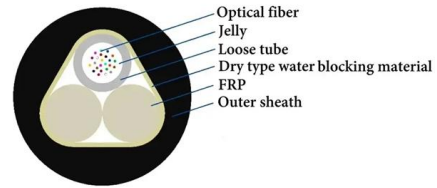


User's Manual Power Distribution Unit

Vertical Installation with Brackets Step 1 - Mounting bracket installation Install the screws (M4 X 6) in holes diagonally from each other. Step 2 - PDU Mounting Install the PDU using fasteners compatible



Power, Environmental, Security & Connectivity Hardware Panduit power distribution, environmental, and connectivity systems improve availability, scalability, power,

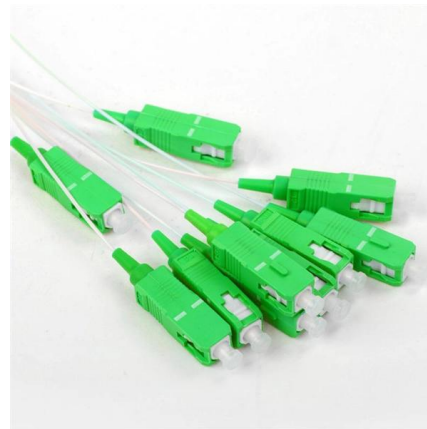


How to Properly Install a Network Cabinet PDU

A network cabinet PDU serves as the backbone of power distribution in your IT infrastructure. It ensures that servers, routers, and other devices receive reliable

GGD AC Low Voltage Power Distribution Cabinet

SP-JP intelligent low-voltage integrated distribution box is a distribution transformer integrated distribution cabinet integrating power distribution, metering, protection



News

The installation of power distribution cabinets and boxes in data rooms is crucial for ensuring efficient and reliable power distribution. However, this process requires careful attention to detail to guarantee



Installing an Intelligent PDU: Step by Step Guide , Intelligent PDU

Get started with installing your intelligent PDU - our step-by-step guide will make the process easy and straightforward.

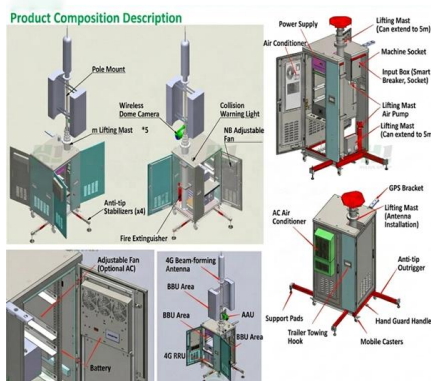


Smart control cabinets Solutions for automating the secondary

-- 02 Pole-mounted control cabinet connected to an overhead-line recloser -- 01 et today's diverse and evolving customer requirements within power distribution. The ready-made solutions offer a cost

How to Choose the Right Wall-Mount Box for Compact

Compact design need not compromise performance--with E-abel, it signifies intelligent power distribution. Keywords: AE series, wall mount box,



Vertical-Installation Brackets for PDUs

For vertical installations of power panels in cabinets, it is necessary to order the appropriate brackets for the basic, monitored or managed PDU, which is not



Contact Us

For datasheets, pricing, or custom high-speed optical interconnect solutions, please visit:

<https://www.syropy.com.pl>