

Installation of Explosion-proof Dual Power Distribution Box





Overview

The wire inlet and outlet of explosion-proof distribution box should be set at the bottom of the box, not at the top, side, back or door of the box; The incoming line and outgoing line shall be sheathed and bundled, and waterproof bending shall be made; The conductor bundle shall. Explosion-proof electrical equipment, such as explosion-proof distribution boxes, is specifically designed for hazardous environments where flammable gases, vapors, or dust may be present. Proper installation, wiring, and usage are critical to ensuring the safety and functionality of these systems. Seven workers vanished after a deafening blast tore through a California fireworks facility last July - a chilling reminder of why explosion-proof electrical equipment installation isn't just regulation, it's life insurance.



Installation of Explosion-proof Dual Power Distribution Box

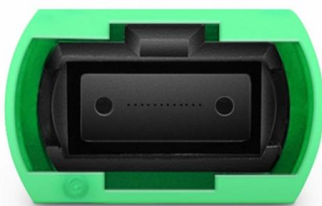


Ex junction and terminal boxes - Explosion-Proof , mlx-ex

Ex junction and terminal boxes are essential components for making safe electrical connections in environments where explosive gases or dust may be present. In such industrial settings, electrical

Precautions for installation of explosion proof power distribution box

1. The wire inlet and outlet of explosion-proof distribution box should be set at the bottom of the box, not at the top, side, back or door of the box; The incoming line and outgoing line shall be



The installation requirements for the distribution box

A distribution box is the heart of any electrical system. It takes the incoming power and safely distributes it to different circuits throughout your

Terminal and Junction Boxes (Ex d) , Explosion Protection

To meet diverse installation requirements, a variety of enclosure dimensions, terminals, and cable gland options are available. The modular design allows for tailored configurations that align with specific



Expert Guide: Select the Right Temporary Power Distribution Box

The right distribution box that matches your power requirements, durability needs, and weather resistance will give optimal performance for specific applications. Note that successful power



Explosion proof Lighting Power Distribution Box

Explosion proof Lighting Power Distribution Box, products shock-resistant and durable, energy-saving and environmentally friendly, models and styles are



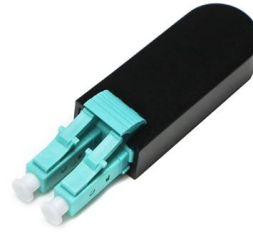
Explosion Proof Power Distribution Boxes CE92

Flameproof and explosion proof, these power overhaul distribution boxes are suitable for use in hazardous areas. Specs: Ex mark: Ex de IIC T4 Gb DIP A21 TA, T4

Explosion Proof Junction Box Types, Prices



Learn about explosion proof junction boxes--pricing, sizes, certifications, and installation tips for electricians and engineers. Shop certified



Flameproof Distribution Board , Explosion proof

The Flameproof Distribution Boards/panels are used for the distribution of the power supply in a company. To handle high-rated power, it is necessary to use heavy



Explosion Proof Power Distribution Boxes

Flameproof and explosion proof, these power overhaul distribution boxes are suitable for use in hazardous areas. Specs: Ex mark: Ex de IIC T4 Gb DIP A21 TA,T4



EPJ-2-ALU 2-Port Explosion Proof Junction Box INSTALLATION SHEET

DIRECTIONS FOR INSTALLATION WARNING: Electrical power supply MUST BE OFF Before and during installation and maintenance.



Precautions for installation of explosion proof power distribution box

The explosion-proof power distribution box and the explosion-proof lighting distribution box should be set separately. If they are combined in the same distribution box, the power and



Explosion-Proof Junction Box for Power Cables

Explore our Junction Box for Power Cables Connection, designed for electrical heating systems in explosion hazard areas. Featuring IP66 rating, easy

Installation guide for hazardous areas

Where it is impossible to reduce the electrical circuit energy (as with electric motor power) the circuits must be physically isolated from the hazardous atmosphere, dust or metals. This is the principle



Explosion-Proof Distribution Box , Product Center

Explosion-proof distribution boxes are designed to safely control and distribute electrical power in hazardous environments, preventing ignition risks.



Wiring Diagram of Dual Power Explosion-Proof Distribution Box

The installation and maintenance of dual power source explosion-proof distribution boxes often involve intricate wiring processes.



Control and Distribution Panels , Ex d , EJB Series

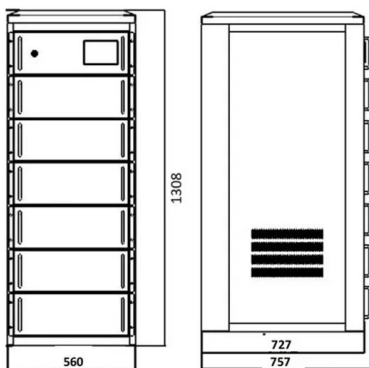
The enclosure series EJB forms the optimal basis for the application-specific configuration of terminal boxes, control stations as well as control and distribution

How to Wire an Explosion-Proof Distribution Box and

Proper installation, wiring, and usage are critical to ensuring the safety and functionality of these systems. Below, we will discuss the correct wiring methods



Cable structure



BM (D)X-Series Explosion Protected Distribution Box

This product is combined with flame-proof cavity and an increased safety cavity, the branch switch and the main switch are operated by the operating handle on the

EXPLOSION PROOF DISTRIBUTION BOX



Single Phase Distribution Board Type of Protection: Ex d Brand : ASP Nouva / Killark Installed with Circuit Breaker, Cable Glands, 4-Core Armoured Cable Outgoing:



Explosion-Proof Distribution Boxes: Special Installation Requirements

Explosion-proof boxes aren't metal containers - they're integrated life-preservation systems requiring holistic design, precision installation, and continuous vigilance.

Power Distribution Box Essentials: Functions, Types

Both ordinary distribution and ex-proof distribution power boxes serve the same purpose of safe power distribution, but each is suitable for different



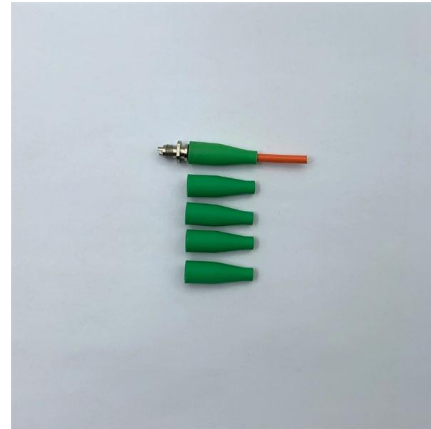
Explosion Proof Distribution Box & Electrical Enclosures

Durable Hexlon Explosion Proof Distribution Boxes and Electrical Enclosures, IECEx and ATEX certified for Zone 1 and Zone 2.



Explosion Proof Distribution Panel

An explosion-proof distribution panel is a critical safety component designed to safely distribute electrical power in hazardous environments where explosive gases,



Energy Distribution

BARTEC's Ex zone 1 Power Handling Systems are designed for extended maintenance and remote operated installations. They include fully modular low-

Wiring Diagram of 1p, 1p+n, 2p in Explosion-Proof Distribution Box

Wiring in explosion-proof distribution boxes during installation and maintenance is a common task, particularly when extending connection lines. Often, due to non-standard operations



Terminal boxes , Junction boxes , Ex , Ex e , Ex d , ATEX , Explosion

We offer bespoke, custom-made terminal boxes and terminal box combinations, as well as standard products with short delivery times. Our products are certified for installation technologies all over the



Ex Distribution Boards & Enclosures , mlx-ex

Ex distribution boards - Explosion-proof distribution boards designed for Ex and ATEX areas. Customizable, safe, and certified electrical solutions.



Explosion-Proof Distribution Boxes & Panels Manufacturer

An explosion-proof distribution box is a rugged enclosure for hazardous areas, safely delivering power while preventing sparks or heat from igniting flammable surroundings.

Wiring Diagram of Dual Power Explosion-Proof Distribution Box

The installation and maintenance of dual power source explosion-proof distribution boxes often involve intricate wiring processes. Special care is needed, especially when extending

REINFORCED VIRGIN PVC TRUNKING
Superior Crush Resistance

ISO 9001
ROHS
DNV-GL

37.6MPA Tensile Strength	2856MPA Elastic Modulus
9.8KJ/M² Impact Strength	1.54G/CM Density

Contact Us

For datasheets, pricing, or custom high-speed optical interconnect solutions, please visit:
<https://www.syropy.com.pl>