

Installation of Cable Trays in Electrical Conduit Shafts





Installation of Cable Trays in Electrical Conduit Shafts



Mastering Cable Tray Installation , Step-by-Step Guide for a Seamless

Learn how to install cable trays correctly. Get the ultimate step-by-step guide on setting up a seamless and reliable cable management system.

Best practice guide to cable ladder and cable tray

Cable ladder and cable tray systems The following recommendations are intended to be a practical guide to ensure the safe and proper installation of



Method Statement for Cable Tray Installation

Prior to any inspections, verify and check cable trays as per IFC drawing, detail drawing, materials specification; supports and accessories are installed in a workmanlike manner as shown on

Safely Installing, Maintaining and Inspecting Cable Trays

The National Electrical Manufacturers Association (NEMA) also publishes three consensus standards that apply to the proper manufacture and installation of cable trays: ANSI/NEMA-VE 1-1998, Metal



Cable Tray Technical Guide A practical guide to product selection and

A practical guide to product selection and installation This guide for engineers and installers has been developed by ABB as a practical reference regarding cable tray characteristics, installation, and



Best Practice Guide to Cable Ladder and Cable Tray Systems

This guide covers cable ladder systems, cable tray systems, channel support systems and associated supports intended for the support and accommodation of cables and possibly other electrical



Best Practice Guide to Cable Ladder and Cable Tray Systems

This publication is intended as a practical guide for the proper and safe* installation of cable ladder systems, cable tray systems, channel support systems and associated supports.



Complete cable tray manual for electrical



engineers and

How to design cable tray? Most projects are roughly defined at the start of cable tray design. For projects that are not 100 percent defined before design start, the cost



Cable Tray and Conduit Installation Guide

This method statement outlines the procedures for installing cable trays and conduits, including: 1) preparing materials and tools, 2) erecting supports and

Cable Tray and Conduit Installation Method Statement

Step-by-step cable tray and conduit installation method with safety, quality and inspection procedures as per IEEE standards.



Cable Tray Installation

Learn everything about cable tray installation with our complete guide. Discover types, steps, and safety tips for efficient electrical cable management.



Method Statement installation of Cable



Trays and Ladders

This method statement covers the site installation of the cable tray & ladders and the requirements of checks to be carried out.

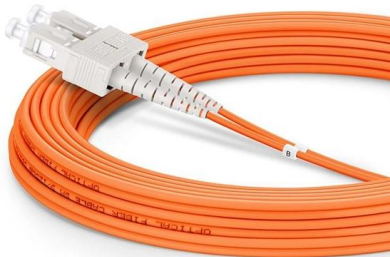


Cable Tray Installation and Cable Handling Method

Efficient cable tray installation and proper cable handling are critical for ensuring the reliability and safety of electrical systems. Adherence to these guidelines is

Master Cable Tray Installation: A Professional Step-by

Learn how to install cable trays for large-scale projects with our professional, step-by-step guide covering industry standards, safety protocols,



Mastering Cable Tray Installation , Step-by-Step Guide for a Seamless

Conclusion Mastering cable tray installation is crucial for creating a safe, organised, and efficient cable management system. By following this step-by-step guide, you can ensure a seamless



Best Practice Guide to Cable Ladder and Cable Tray Systems

Introduction This publication is intended as a practical guide for the proper and safe* installation of cable ladder systems, cable tray systems, channel support systems and associated supports.



A Guide to Installing and Supporting Electrical Cable Trays

This guide covers the critical steps, from selecting the right electrical cable tray and performing accurate cable fill calculations to managing a safe cable pull through



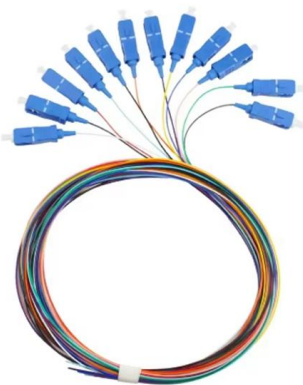
Understanding Cable Pathways, Cable Conduits, Cable

In this blog post, we discuss two types of cable pathways: conduits and cable ladders. Additionally, we cover cable pits. Explore the essentials of cable



Cable Tray Technical Guide A practical guide to product selection and

Cable tray is considered to be a system. It must provide continuous support for cables, and the electrical continuity of the cable tray system must be maintained.



Method Statement for Installation of Cable



Tray or Trunking

On completion of cable tray/ ladder installation including fittings, inspect exposed finish. Remove burrs & construction debris and repair damages finishes



GUIDE CABLE TRAYS TECHNICAL

Specifies requirements for metal cable trays and associated fittings designed for use in accordance with the rules of Canadian Electrical Code, Part I and the National Electrical Code®

Cable Tray Roll Forming Machine

Cable tray machine Cable tray machine Roll Forming Systems for Cable Trays A cable tray system used to support insulated electrical cables used for power



Designing a Future-Proof Fiber Backbone for Multi

This article presents a comprehensive guide to designing a future-proof fiber cable backbone for multi-tenant buildings, with a focus on standards



Contact Us

For datasheets, pricing, or custom high-speed optical interconnect solutions,
please visit:

<https://www.syropy.com.pl>