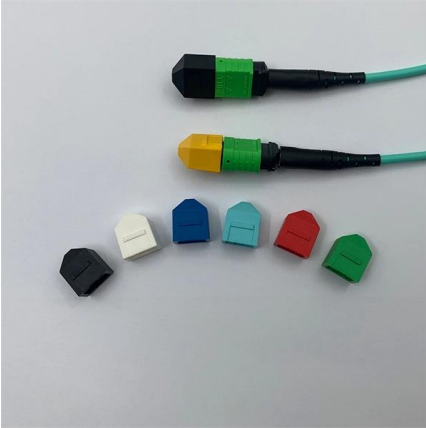


Installation of Cable Trays Under Open Bottom





Installation of Cable Trays Under Open Bottom



Mastering Cable Tray Installation , Step-by-Step Guide for a Seamless

Learn how to install cable trays correctly. Get the ultimate step-by-step guide on setting up a seamless and reliable cable management system.

What are Cable Trays? Everything you need to know

Discover everything about cable trays in industrial settings: types, benefits, installation tips, and compliance with NEC and fire resistance standards.



Cable Tray Institute

Fabricated in numerous styles (wiremesh, ladder, ventilated trough, channel, and solid-bottom) and sizes, cable tray provides the greatest versatility among cable

Cable Tray Systems: Requirements and Best Practices

Comprehensive guide to cable tray systems requirements: tray types, materials, loading, supports, bonding, routing, and best practices for safe electrical cable management.

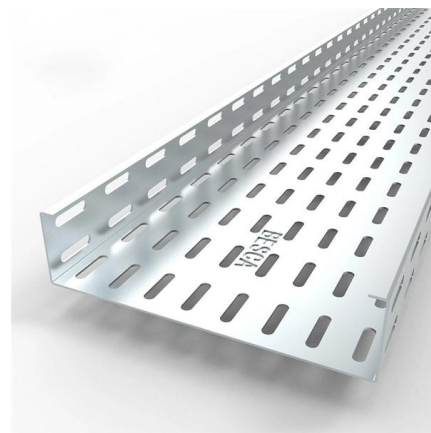


Understanding NEC Article 392

Master cable support systems with Understanding NEC Article 392: The Infrastructure. Learn safety rules and installation codes for commercial cable trays.

Cable Tray Installation Rules (NEC 392) - Electrical Trader

Core rules for selecting, installing, grounding, and filling cable trays--clearances, materials, separation, and bonding explained.



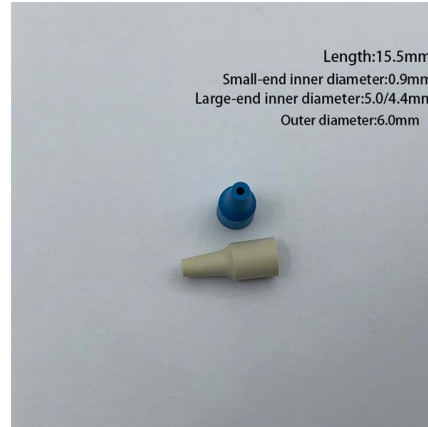
Cable Tray Ladder Trunking Wire Basket Installation

Resources For Electrical & Electronic Engineers Cable Tray Ladder Trunking Wire Basket Installation Guidelines What Are Cable Trays? An assembly of



How to install Cable Trays - Best Guide in 2026

In this post, we will see together how to install cable tray on-site. Firstly, we need an approved shop drawing that shows the cable tray route, its dimensions,



A Guide to Installing and Supporting Electrical Cable Trays

A professional guide to installing electrical cable tray systems per NEC Article 392. Covers support, securing cables, and fill calculations.

Best Practice Guide to Cable Ladder and Cable Tray Systems

Introduction This publication is intended as a practical guide for the proper and safe* installation of cable ladder systems, cable tray systems, channel support systems and associated supports.



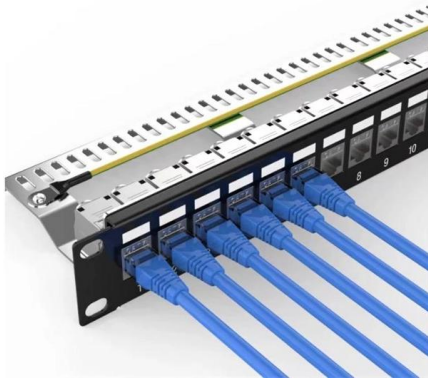
Guide to cable support systems

A cable support system consists of cable support lengths and system components, such as cable support fittings, support elements, mounting elements and system accessories. The cable support

Mesh cable tray systems



4 1 Product description OBO mesh cable tray systems stand out through their high load capacity and good ventilation. They can be used universally. The mesh cable trays are suitable for the installation



What is Cable Tray and How it is used in Industrial

What is Cable Tray? In electrical cabling, a cable tray is a metallic structure used to handle insulated electrical power distribution, control, and

Mastering Cable Tray Installation , Step-by-Step Guide for a Seamless

Mastering cable tray installation is crucial for creating a safe, organised, and efficient cable management system. By following this step-by-step guide, you can ensure a seamless setup that



Cable Tray Technical Guide A practical guide to product selection and

Cable tray is considered to be a system. It must provide continuous support for cables, and the electrical continuity of the cable tray system must be maintained.

Guide to cable support systems



Widths of 8 and 15 millimetres enable flexible adjustment to different cable trays, cable ladders and cable volumes. With the help of the matching SBV tightening strap locks and 576 spring chuck, the



Installation Of Cable In Cable Trays: NEC, Safety

Installation of Cable in Cable Trays ensures proper routing, cable management, NEC compliance, grounding, fire safety, and load capacity.

Cablofil Cable Management , Legrand

Build a cable management system with Cablofil wire mesh cable tray, ladder cable tray, prefab assemblies for branch circuit wiring, fasteners, and accessories.



Best Practice Guide to Cable Ladder and Cable Tray Systems

This publication is intended as a practical guide for the proper and safe* installation of cable ladder systems, cable tray systems, channel support systems and associated supports.



A Guide to Installing and Supporting Electrical Cable Trays

This guide covers the critical steps, from selecting the right electrical cable tray and performing accurate cable fill calculations to managing a safe cable pull through



NEC Article 392 Guide: Ensuring Compliance for Cable

Master NEC Article 392 with our comprehensive guide. Learn essential cable tray requirements for installation, grounding, and fill capacity to

What are the main components of a cable tray?

Discover the main components of a cable tray system. Learn about tray types, fittings, supports, and accessories for effective cable management.



Cable tray manual

These documents: ANSI/NEMA VE-1, Metal Cable Tray Systems; NEMA VE-2, Cable Tray Installation Guidelines; and NEMA FG-1, Non Metallic Cable Tray Systems, are an excellent industry resource in



Cable Tray Installation

Whether you're building a commercial setup or upgrading an industrial plant, proper cable tray installation ensures neat wiring, safe access, and easy maintenance. But before you lay the first tray



Cable tray

In the electrical wiring of buildings, a cable tray system is used to support insulated electrical cables used for power distribution, control, and communication. Cable

Cable Tray Installation

Proper planning for installing cable tray includes calculations based on loading, support systems, cable/wire fill and spacing, conductor types, securing of the cables and wire, and proper grounding



Explaining NEC Article 392 on Cable Trays

NEC Article 392 explains cable trays, their components, appropriate wiring methods for cable trays, and instances where they are and are not



B-Line series Cable Tray Design Considerations

For ladder cable trays supporting large power cables, 9-inch or wider rung spacings should be selected. For many installations the power cables will exit out the bottom of the cable tray and into the top of



Cable Tray Installation

Although cable tray installation is virtually maintenance free under normal conditions, inspection of cable tray installations is recommended as part of a facility's routine maintenance schedule for electrical

GUIDE CABLE TRAYS TECHNICAL

If it has excellent electrical continuity and is integrated in the installation's equipotential bonding system, a metal cable tray reduces the coupling's impact and thus contributes to good EMC of the electrical



Contact Us

For datasheets, pricing, or custom high-speed optical interconnect solutions, please visit:
<https://www.syropy.com.pl>