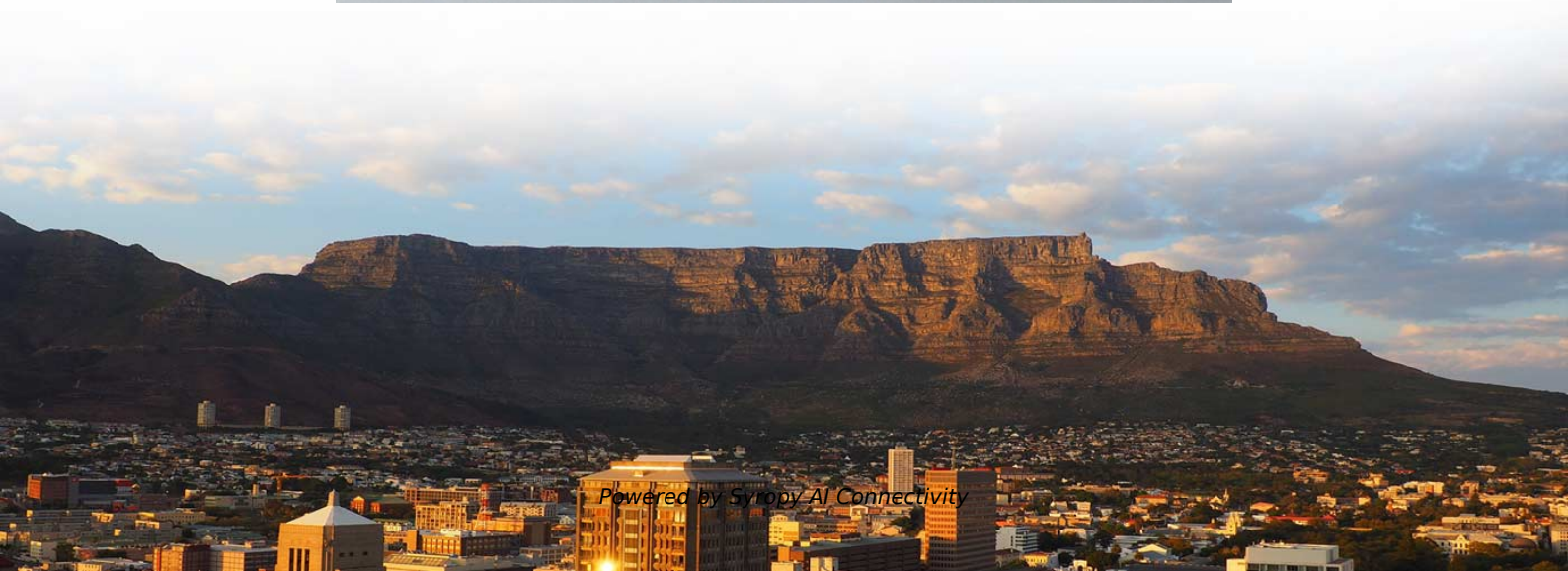


# **Installation height of optical junction box**





## Overview

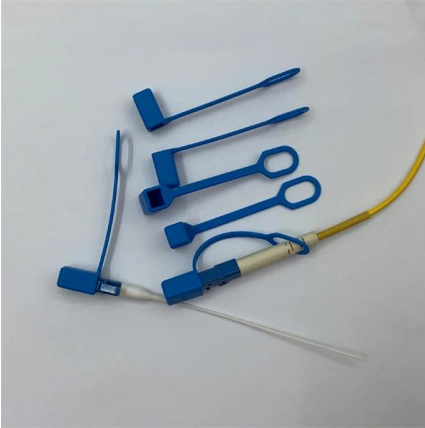
---

Typically, the joint box is installed on the inner side of the iron tower, ideally at a height between 8 and 10 meters above the ground. This placement not only provides uniformity along the line but also protects the fibers from environmental exposure while ensuring easy access for. With regard to the ambient conditions, several factors and standardised specifications must be taken into account, in order to select the right junction box for the intended place of use. Note on AI-generated content: The content of this blog is created with the help of advanced artificial intelligence.



## Installation height of optical junction box

---



### Mounting and installation information for junction boxes

Taking the above-mentioned parameters into account, protected installation of the junction boxes is essential and also described in detail in the erection standards.

### Best Practices for Optical Cable Junction Box Installation in 2025

The installation of an optical cable junction box is crucial in ensuring the integrity and performance of optical networks. As we enter 2024, adhering to best practices not only enhances system reliability



### How to build a fibre network

Between now and then, Openreach will move tranches of exchanges into a 'stop sell' position when 75% of addresses in an exchange area can get full fibre broadband (also known as Fibre to the Premises)

### Which Fiber Optic Junction Box is Best?

Which Fiber Optic Junction Box is Best? When it comes to fiber optic junction boxes, a variety of options are available. Usually, a common question asked by customers is which box is best for their



### Installing fiber optic junction boxes correctly

Follow our simple guide to correctly install your fiber optic junction box and enjoy the benefits of a high-speed connection. Click here for all the materials and tools you need.

### Fiber Junction Box: Your Guide to Installation, Types,

Discover the world of Fiber Junction Boxes! Explore installation tips, different types, and the advantages they offer. Get expert insights for seamless



### CFX ITS Inspection Reference & Training Manual

3.2 PULL BOX INSTALLATION REQUIREMENTS  
This Section will outline the installation requirements for both electrical and fiber optic pull boxes. Both electrical and fiber optic pull boxes shall use



## PLDT FTTH Installation Standards Guide , PDF , Optical

Overview of PLDT FTTH Standard Installation\_V2 - Free download as PDF File (.pdf), Text File (.txt) or view presentation slides online.

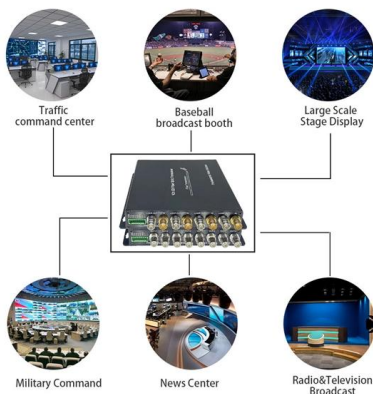


### Junction Boxes

Junction boxes with screw-type terminals must be installed in locations that allow inspection, testing, and maintenance in compliance with

### How to build a fibre network

The simplest installation involves the provision of the Openreach equipment (i.e. the ONT will be positioned adjacent to the outside wall) to which the customer then attaches the router, provided by



### Junction Box Installation & Operation Manual

Locat the Junction Box on the support leg web or on a brace. Vertically, locate Junciton Boxes at a convenient height, approximately 4 ft (1.2 m) from the ground. The exact location is not critical, but

### How to install optical fiber distribution box?



- Determine the installation position of the optical fiber distribution box based on the design document or actual requirements. The location should be in a dry, ventilated, and anti-corrosion place, and the



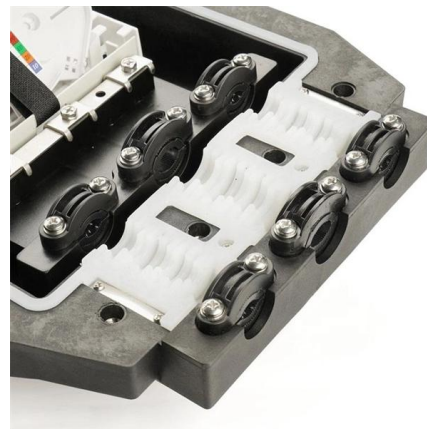
### How to Choose the Right Optical Junction Box?

Choosing the right optical junction box is crucial for ensuring the performance, reliability, and longevity of your optical networks.



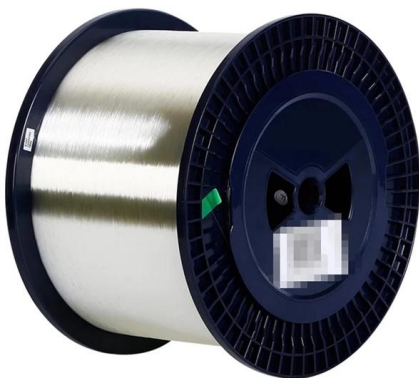
### How Do You Install an OPGW Cable Joint Box?

Learn the essential steps for installing an OPGW cable joint box, including preparation, mounting, fiber splicing, and sealing techniques, to ensure reliable



### Optical Fiber Cable Installation Guideline

Most optical fibre cables can be installed in vertical situations without any issues arising. In tall buildings like TV towers with a height of max. 650 m, our experience shows that no filling compound will drip



### Fiber Optic Junction Box Installation Guide



Installation guide This Installation Guide is valid only for Ex Fiber Optic Junction Box (EXJB). For your safety please read this guide carefully. n this g id will render



### How to Master OPGW Joint Box Installation: Step-by-Step Guide

Successfully installing an Optical Fiber Composite Overhead Ground Wire (OPGW) joint box is crucial for ensuring efficient telecommunications and electrical connections in overhead installations. This

### At what height should you place a junction box from the

Junction boxes are an essential component of electrical systems, helping to safely house electrical connections and provide protection from potential hazards. When



### All You Need To Know About Fiber Termination Boxes:

Source In this blog, we will discuss the two types of fiber optic cables and the role of a simple yet essential piece of equipment in the fiber laying





## Overhead Optical Cable Construction Guidelines

3. The overhead optical cable is reserved for one place for every 10 poles, with a reserved amount of 10 meters per place and a coil diameter of



## FIBER OPTIC CONSTRUCTION STANDARDS

Fiber optic cable sequential numbers are required at each pole location and vault wall. Sequential numbers will identify conduit length, and slack left in vaults and at poles.

## At what height should you place a junction box from the

When installing a junction box, it is crucial to consider its placement height from the floor to ensure maximum usability and safety. This article will explore the factors



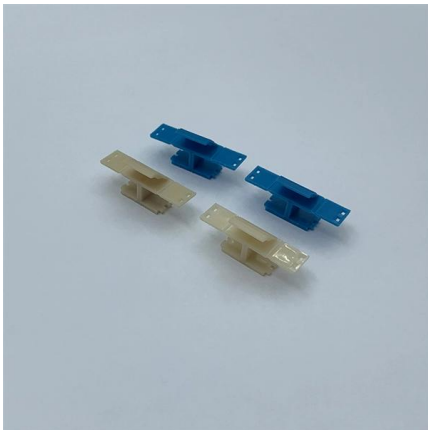
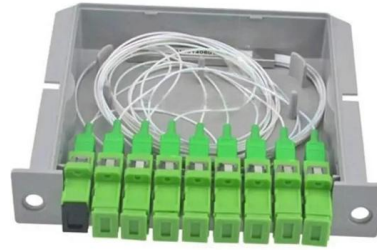
## Integrated wiring fiber optic distribution box installation tutorial

The optical fiber distribution box allows people to easily access the optical fibers in the box, and can well protect the optical fibers. In addition, the drawer structure also facilitates high



## Fiber Terminal Box vs Junction Box: Key Differences

Compare fiber terminal box vs junction box in functions, applications, and installation. Learn which suits FTTH fiber vs electrical wiring.



## How Do You Install an OPGW Cable Joint Box?

The location and height of an OPGW joint box are critical to its performance and ease of maintenance. Typically, the joint box is installed on the inner side of the

## Contact Us

---

For datasheets, pricing, or custom high-speed optical interconnect solutions, please visit:  
<https://www.syropy.com.pl>