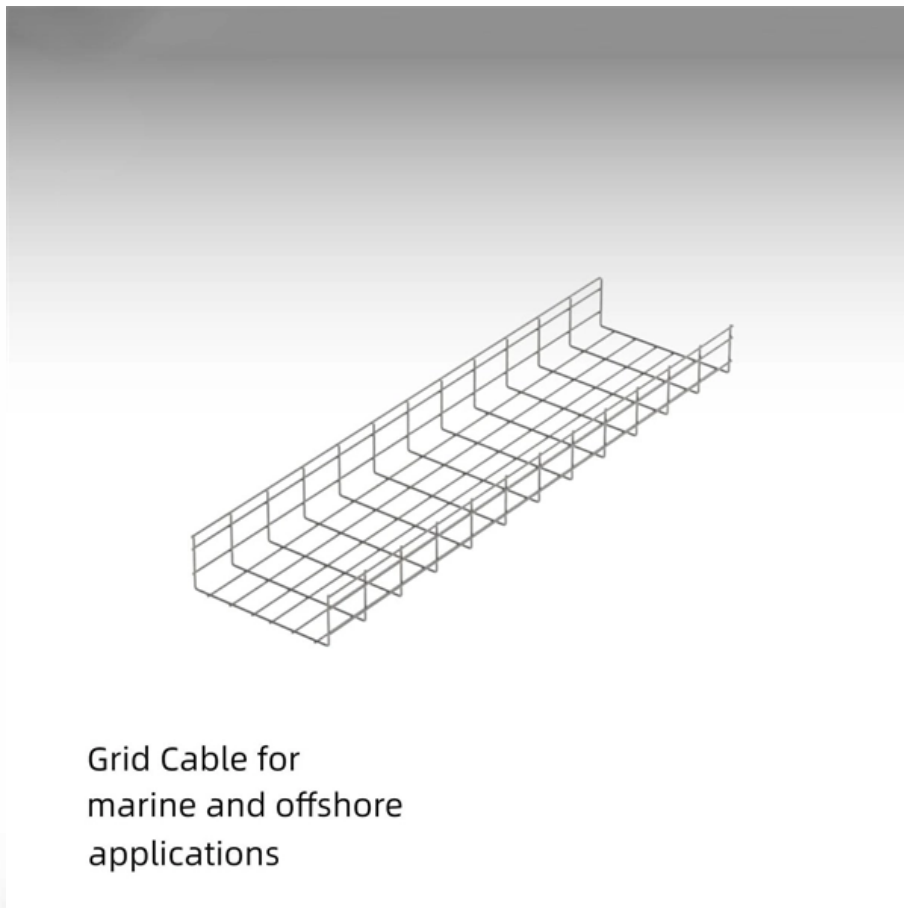


Installation height of fire protection distribution box main unit





Overview

The proper installation of a distribution box involves placing it at the right height to ensure safety and convenience. For the convenience of elderly individuals and those with disabilities, a height of 1.



Installation height of fire protection distribution box main unit



What is the Ideal Installation Height for a Distribution Box

The proper installation of a distribution box involves placing it at the right height to ensure safety and convenience. Mounting it 4.5 to 5.5 feet (1.4 to 1.7 meters) high

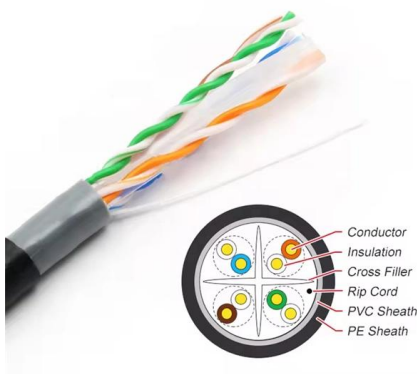
TECHNICAL SPECIFICATION FOR LT DISTRIBUTION BOX

General Technical Particulars for LT Distribution Boxes : - The L.T. Distribution Boxes should be of the dimensions as per the drawing & details in the table furnished.



The installation requirements for the distribution box

In homes, the best height for installation is about 1.5 meters from the floor -- it's easy to reach and out of children's reach. In industrial settings, you



Quality Control for Installation and Construction of Electrical Riser

Master the key quality control methods for electrical riser & distribution box installation. Ensure safety, compliance, and prevent hazards in building electrical systems.



NFPA 72 Mounting Height Requirements for Fire Alarm

Below are key mounting height requirements for fire alarm system components as per NFPA 72 standards: Installation Guidelines . Smoke Detector o Placement:



Power Distribution Boxes Explained Simply

Learn what a power distribution box is, how it works, key components, types, and why it's vital for safe and efficient electrical systems.



Installation requirements for distribution boxes

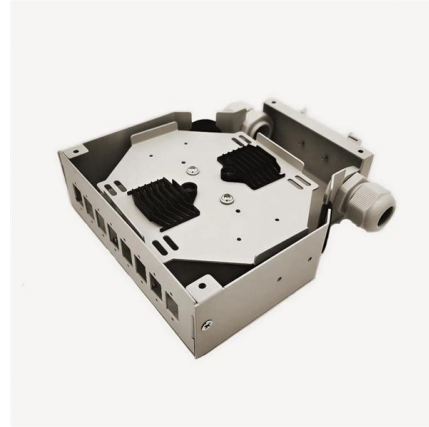
Installation of closed or explosion-proof electrical facilities; distribution box electrical components, meters, switches and lines should be arranged neatly, firmly installed, easy to operate.





Consumer unit buying guide

This consumer unit buying guide covers the basics of what a consumer unit is and the 18th edition regulations. We also look at the five types of consumer units and



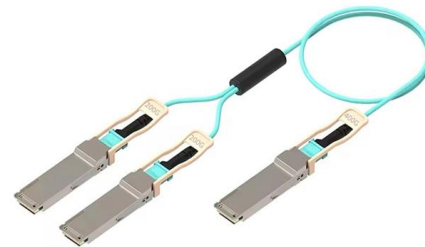
DB BOX(Electrical Distribution Box): Everything You

Learn everything you need to know about the Electrical Distribution Box (DB Box). Explore types, materials, installation tips, etc.



IEC / BS 7671 Codes for Consumer Unit and Distribution

Good to Know: The IEC 60364 "Low-voltage electrical installations" equivalent for EU is HD 60364. IEC 60364 address residential premises. Refer to IEC 60364-7-701



The Complete Guide to Distribution Box: Installation, Types & More

Making Smart Electrical Infrastructure Decisions Distribution boxes form the foundation of safe and reliable electrical systems. Understanding their components, installation requirements, and



What is the Ideal Installation Height for a



Distribution Box

Install a distribution box at 4.5 to 5.5 feet high for safety, accessibility, and compliance. This height ensures easy use and protection from hazards.



FIRE PROTECTION AND FIRE SAFETY REQUIREMENTS

This part covers the requirements of the fire protection for the multi-storeyed buildings (high rise buildings) and the buildings, which are of 15 m. and above in height and low occupancies of

IEC / BS 7671 Codes for Consumer Unit and Distribution

Residential: The recommended height for distribution board and consumer unit is between 1 metre to 1.8 metre from the floor. The suggested height is 1.3 metres



WebiTelecomms Cabling

Consumer Units

As there are different types of protection and sizes of installation the costs of a replacement consumer unit can vary. Typical costs for a domestic consumer unit within a domestic installation can range



How to confirm whether the installation location of the

Before installation, an on-site inspection should be conducted to confirm whether the installation location of the box meets the above

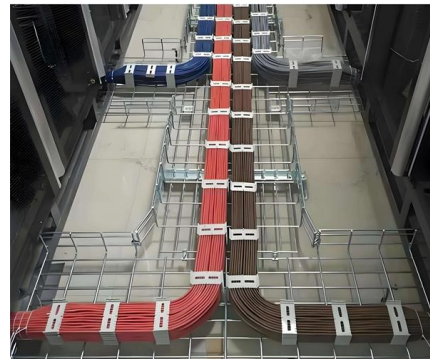


I.S.10101 Bitesize Guide

Section 530.6.2.3 states that a wall-mounted distribution board shall be mounted at a height not greater than 2.15m measured from the floor to the top surface of the highest protective device.

IEC and BS 7671 Requirements for Consumer Unit and

PEN Conductor Restrictions: In hospitals, emergency units, and other medical locations downstream of the main distribution board or consumer unit, PEN



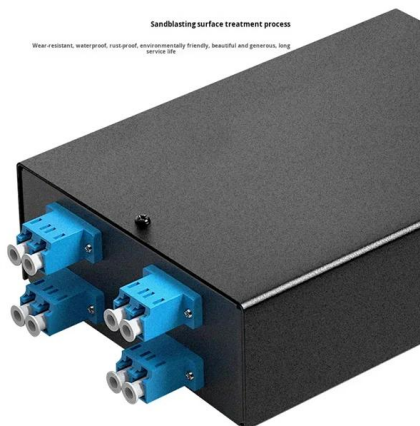
NFPA 72 Mounting Height Requirements for Fire Alarm

Fire Alarm Control Unit/Panel (FACU/FACP) o Height: Lowest switch, lamp, or display: 15 inches minimum; Highest switch, lamp, or display: Maximum 6 feet.



Power distribution cabinet installation method and

The distribution box should not be made of combustible materials; in dry and dust-free places, the wooden distribution box used should be flame retardant. 5,



Understanding Distribution Boxes: A Comprehensive Guide

The right distribution box depends on the installation environment, protection level, load requirements, and application type. By understanding the

Fire protection guide for electrical installations

When the fire protection design has been completed, the appropriate systems and components are in-stalled. The installation engineer is required here. And it is here where there are requirements which



Installation points of household distribution box

The distribution box of household distribution box should not be installed too high. Generally, the installation elevation is 1.8m to facilitate operation; the electric pipe



IEC and BS 7671 Requirements for Consumer Unit and

Residential Settings: In residential environments, the recommended installation height for distribution boards and consumer units ranges from 1 to 1.8 meters



Consumer Units - Safe fuse-box upgrades for modern homes

Consumer units have been called many different names over the years, such as fuse box, fuse board and dis-board. They are typically installed in domestic premises to provide control, distribution and

How to Choose a House Distribution Box , CHINT global

Safety Considerations Safety is the top priority when choosing a distribution box. The distribution box must be able to handle the electrical load



Fire Alarm Detection Guide , Installers Guide , Amherst College

Fire Protection Construction Documents - When the Massachusetts State Building Code requires a fire alarm system; Fire Protection Construction Documents shall show the location and number of all



Requirements And Specifications For Installation Of

Installation height and fixing method?: The bottom edge of the distribution box is usually between 1.5 meters and 1.8 meters above the ground,



Contact Us

For datasheets, pricing, or custom high-speed optical interconnect solutions, please visit:
<https://www.syropy.com.pl>