

Installation height of fire alarm light module





Overview

Not less than 2300 mm above the floor (where ceiling heights allow) measured to the centre of the device. NFPA is offering a free graphic that shows installation requirements for fire alarm equipment such as pull stations, smoke and heat detectors, notification appliances, and control equipment. A comprehensive, step-by-step Method Statement for Fire Alarm System Installation. Maximum spacing is defined by the detector's listed coverage, commonly up to 50 ft (15 m) on smooth ceilings. Manual Call Points (Manual Fire Alarm Boxes) maximum travel distance to a manual box.



Installation height of fire alarm light module



Installation Heights , PDF

This quick reference can help you determine the minimum and maximum heights for wall-mounted fire alarm equipment as found in the 2022 edition of NFPA 72®,

Hier sollte eine Beschreibung angezeigt werden, diese Seite lässt dies jedoch nicht zu.



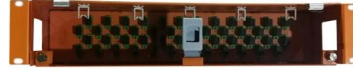
E6.02

42" MIN NFPA 72 WALL (SUM OF DIAMETER OF OTHER ENTRIES, ROW 2 ONLY) = (MIN. REQUIRED FROM EACH ENTRY TO OPPOSITE WALL)



Step-by-Step Fire Alarm Installation Guide & Method

A comprehensive, step-by-step Method Statement for Fire Alarm System Installation. Covers scope, NFPA 72 compliance, cabling, device

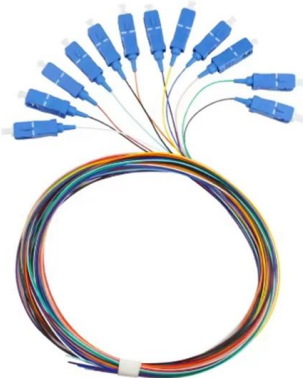


Understanding NFPA 72 Fire Alarm Requirements

These questions address NFPA 72 (2022) guidelines for the installation of fire alarm initiating and notification devices, encompassing criteria for device coverage,

Essential Guidelines for Compliance and Safety

By mastering fire alarm placement, documentation, and compliance, you can deliver systems that meet the highest safety standards. Ready to take your fire alarm installations to the next



NFPA 72: Fire Alarm Device Installation Heights and

NFPA 72: Fire Alarm Device Installation Heights
Proper installation of fire alarm system appliances, devices, and equipment is crucial for ensuring reliable fire



NFPA 72: Fire Alarm Device Installation Heights

?NFPA 72: Fire Alarm Device Installation Heights?
 ? Proper installation of fire alarm system appliances, devices, and equipment is crucial for ensuring reliable fire



Ordering information

Model	1	2	3	4	5	6
Model	SP1201	SP1202	SP1203	SP1204	SP1205	SP1206
Product name	Patch Panel	Patch Panel	Patch Panel	Patch Panel	Patch Panel	Patch Panel
Illustration						
Model	1	2	4	1	2	4
Maximum number of ports	144	288	576	144	288	576
Product size (including module and adapter)	482.4(23.1144) mm	482.4(23.1181) mm	482.4(23.1117) mm	482.4(23.1144) mm	482.4(23.1181) mm	482.4(23.1117) mm
Standard color code	RAL9005	RAL9005	RAL9005	RAL9005	RAL9005	RAL9005

Fire Alarm Strobe Light Code Requirements and

Because the light pattern is different, it doesn't meet code. Fire alarm strobe: Common pitfalls and installation challenges One difficulty is that you must be able

NFPA Graphic: Installation Heights for Wall-Mounted

This quick reference can help you determine the minimum and maximum heights for wall-mounted fire alarm equipment as found in the 2022



NFPA Fact Sheet , Installation Heights for Wall-Mounted Fire Alarm

Download the NFPA fact sheet on installation requirements for fire alarm equipment such as pull stations, smoke and heat detectors.



NFPA 72 Fire Alarm Strobe Requirements Made Simple!

Understanding candela ratings, installation heights, and placement strategies is crucial for ensuring proper visual notification in a fire alarm system. ? Topics Covered in This Video: Types of

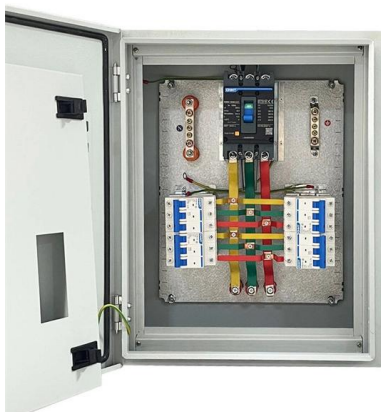


Manual Pull Station Mounting Heights , PDF

The document outlines the mounting heights for fire detection and alarm devices as per NFPA 72 2013 Edition for the Sonata Premier and The Premier Hotel project.

Fire Alarm Bell Mounting Height: The NFPA 72 Rules

The wall-mounted bell is a staple of fire protection, facilitating evacuation and firefighting efforts. Learn NFPA 72's rules on fire bell mounting



What is the height requirement for a fire alarm beacon?

What is the minimum height for a fire alarm panel? A correctly orientated plan of the building must be displayed close to the control panel showing entrances, escape routes and zones.



NFPA 72 Installation & Design Requirements: Heights, Distances,

Comprehensive guide summarizing all NFPA 72 installation and design requirements including mounting heights, detector spacing, visual and audible notification distances, and manual



Fire Alarm System Installation Guideline

This table is a convenience guideline for basic wall-mounted device installation heights only. The manufacturer's installation instructions should be consulted for termination of wiring and approved

BSGuide_FSTB9136UK_0716

THE INNOVATIVE TWINFLEX, 2-WIRE PANEL IS SUITABLE FOR A VARIETY OF INSTALLATIONS. This versatile fire alarm panel incorporates Fike's Multipoint detection system using smoke and heat



NFPA 72 Mounting Height Requirements for Fire Alarm

Below are key mounting height requirements for fire alarm system components as per NFPA 72 standards: Installation Guidelines . Smoke Detector o Placement:



Fire Alarm System Mounting Height: A Critical Guide for

Fire Alarm System Mounting Height: A Critical Guide for Optimal Safety and Code Compliance
The fire alarm system mounting height isn't just a

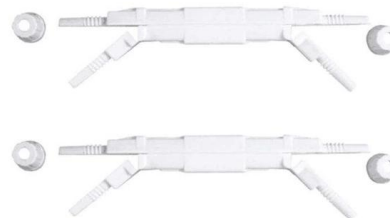


Fire Protection Technicians Network

TECH Q & A (FAQ's) Fire Alarm Installation (ULC 524, NFPA 72): "We live in a society exquisitely dependent on science and technology, in which hardly anyone knows anything about science and

Fire Alarm Field Device Installation Guideline (Canada)

6. While installation heights are not specifically mentioned in most manufacturer's printed installation instructions, we would recommend that you install these modules not higher than 1800 mm above



Fire Alarm Detection Guide , Installers Guide , Amherst College

Purpose: The purpose of this guide is to provide design, installation, and testing criteria for fire detection systems at Amherst College. The Fire Alarm Detection Guide is a reference guide that includes



What is the mounting height for NFPA 72 fire alarm?

NFPA 72 sets standards for the minimum and maximum mounting heights for fire alarm control units. The devices must be located between 1.5 and 5.5 feet above the finished floor to



Location of Fire Alarm Control Units , NFPA

A question that we receive from time to time involves the location of fire alarm control units (FACU). This question typically comes in as someone

Contact Us

For datasheets, pricing, or custom high-speed optical interconnect solutions, please visit:
<https://www.syropy.com.pl>