

Installation height of a single electricity meter distribution box





Overview

7 meters) high makes it easily accessible without the need to bend or stretch excessively. The installation height of the meter box and small power distribution unit usually needs to be determined according to local electrical codes and standards to ensure safety and easy reading. What is the correct height for a meter box?

In the UK: The maximum height is 1800mm between the box's top and the ground level. A position on the house wall facing the driveway, or within 2m of either corner of this wall is normally acceptable subject to.



Installation height of a single electricity meter distribution box



What Height Should Electric Meter Box Be?

Unless your utility company has placed the meter box at a position higher than six feet to discourage people from tapping into the top, aim for a height of 4 - 6 feet.

How to Install an Electric Meter Box: A Step-by-Step Guide

Step-by-step guide to installing an electric meter box. Learn safety tips, wiring steps, troubleshooting, and when to call a pro.



Guidance on installing equipment within meter

The experts at NICEIC provide more detail on the installation of equipment in meter boxes. Electrical equipment associated with the consumer's

CEB DISTRIBUTION CONSTRUCTION STANDARDS CEB:DCS-2:2021

Electricity distribution has developed rapidly and various systems have been adopted with different pole sizes and materials for service connection construction.



Electric Meter Box Placement Rules You Must Follow

Learn meter box placement rules for height, clearance, and access to ensure safe installation and avoid utility inspection delays.



YOUR METER CABINET

The meter cabinet must be directly accessible from the main entrance driveway. A position on the house wall facing the driveway, or within 2m of either corner of this wall is normally acceptable subject to



Microsoft Word

This construction standard specifies the minimum requirements for the design of meter room and method of installation of KWH meter boxes inside meter rooms.





What Height Should Electric Meter Box Be?

This is important because the utility company routinely sends technicians to take meter readings. An electric meter box that requires a ladder to access is a

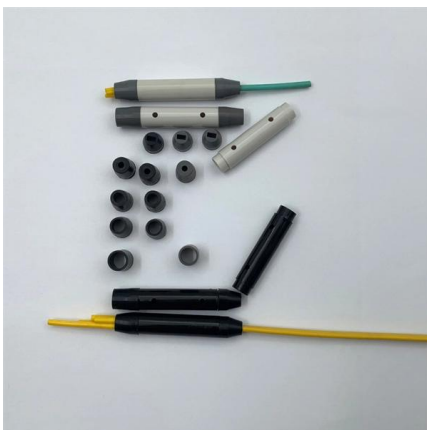
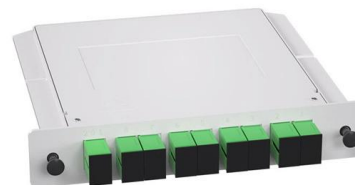


Where Can I Put My Electrical Meter Box

Learn where to install your electrical meter box for safety, easy access, and regulation compliance with expert tips and maintenance advice.

ADDC Guidelines for Smart Meter Installation (Rev)

Install 25mm dia. PVC conduit (Heavy grade 1250N compression force) horizontally between the water meter room to electricity meter room in each floor and install vertically between the floor-to-floor from



Wiring of the Distribution Board From Energy Meter to

In the fig below for single phase electric home supply installation and wiring of a distribution board, you may see the the single phase electric supply (230V AC



Wiring Diagram for Electric Meter Box

Final Thoughts on Electric Meter Box Wiring
Properly wiring an electric meter box is crucial for ensuring the safe and reliable distribution of electricity throughout a

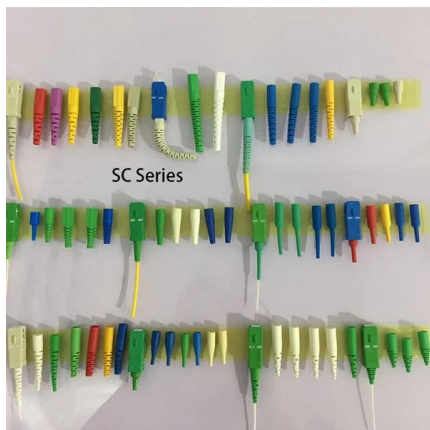


How to Install an Electric Meter Box 2026

To stay within code and utility standards, your electric meter box should be mounted so that the center of the meter sits approximately: Between

How To Wire & Install a 1-Phase kWh Energy Meter?

Installation of 1-Phase Energy Meter , 1-?, 2-Wires Electric Meter for 230V & 120V/240V AC Mains Supply & Service (From the Power Supply to The Main



Requirements And Specifications For Installation Of

Installation height and fixing method?: The bottom edge of the distribution box is usually between 1.5 meters and 1.8 meters above the ground,

Please note that this information is for guidance only (as per Streetworks UK), and the adopting network owner may have specific requirements that will be shown on your electricity design, or other utility



Electric Meter Box Height , MJBOX Installation Guide

Ensuring the correct height for electric meter boxes is essential for safety and compliance with the National Electric Safety Code. Residential installations typically follow recommended heights

Wiring of the Distribution Board From Energy Meter to

The electric main supply (230V AC & 120V AC in US) is connected through secondary of the transformer (3, Phase 4 Wire System), single phase energy



Meter installation guidelines

Meter installation guidelines Electric meters The National Electric Safety Code requires an unobstructed working space that extends from the floor or ground to a



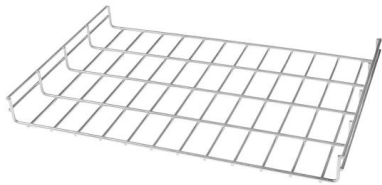
The Minimum Height Of Electrical Meters

Electrical meters are supplied by the utility company. While the National Electric Code (NEC) has not specified a minimum, ideal and maximum



**/GVGT +PUVCNNCVKQP CPF
5RGEKHKECVKQP *CPFDQQM 8GTUKQP**

Corrected errors in numbered bullets in all drawings Fall 2019 Added Section 5.4 of General Information section to address Meter Trough Systems Spring 2020 Added Section 10 to address Generator



MULTI UNIT ELECTRIC METER BASE INSTALLATION (PART 1)

MULTI UNIT ELECTRIC METER BASE INSTALLATION (PART 1) On This video i will share to you, how i install a multi unit electric meter base (9 meter base with nema, wire gutter box,and a main Circuit breaker.



Guide for Electric Service and Meter Installations

All 480-volt self-contained meter installations, Figure 15, require the installation of non-fused load break disconnect switch (provided and installed by customer) ahead of the meter socket for the safety of



Contact Us

For datasheets, pricing, or custom high-speed optical interconnect solutions, please visit:

<https://www.syropy.com.pl>