

Installation Techniques for Neutral Line of Distribution Box



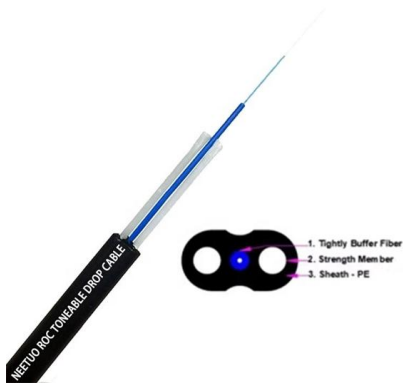


Overview

Ensure safe placement: install in dry, accessible areas with good ventilation and at appropriate height (typically ~1. The installation of the neutral wire in the distribution box is a crucial part of the electrical system, which is related to electrical safety and system stability. Whether you are an electrical contractor or a construction brigade, knowing how to properly and safely install distribution boxes is the basis of ensuring the safe operation of the entire system. Whether it is residential buildings, commercial facilities or industrial sites, the.



Installation Techniques for Neutral Line of Distribution Box



How to Install a Neutral Wire , 7 Easy Steps (2026)

In this guide on how to install a neutral wire, we will walk you through the necessary tools, safety precautions, and step-by-step instructions to install a

Grounding System Installation Standards for Distribution Boxes and

By understanding the deeper principles behind grounding standards, avoiding common installation pitfalls, and insisting on certified materials from reputable suppliers, you're not just following



Single Phase Distribution Box Definition and Main Parts

You can trust a single phase distribution box to help your circuits work well and stay safe every day. Key Takeaways A single phase distribution box helps control and share electricity in your home or



"Guidelines for Household Distribution Box Specifications and

Installing a household distribution box requires careful attention to specifications and safety guidelines. Understanding these parameters is vital for ensuring the safety and efficiency of



Correct installation-identification of the neutral of a Low Voltage

Due to these voltage variations, breaks of devices connected to that feeder can occur in different customer installations, resulting in significant fines being charged to the distribution company. Note:

Waterproof Distribution Box Wiring And Neutral Wire Installation

There should be no exposed live parts in waterproof cable box. The neutral wire in plastic weatherproof electrical box should be connected through the terminal board and separated



9 Recommended Practices for Grounding

Electrical Grounding Techniques Grounding and bonding are the basis upon which safety and power quality are built. The grounding system provides a



The installation requirements for the distribution box

Before starting the installation, finding a proper place for putting the distribution box is crucial, because it largely decides the safety and convenience



How to Install a Cable Distribution Box Safely and

This article provides a detailed overview of the entire process of installing a distribution box, from pre-installation preparation to post-installation

Step-by-Step Guide to Install MCB Distribution Box

Learn how to safely install an MCB distribution box with this comprehensive guide. Step-by-step instructions to ensure correct installation.



TP& N Distribution Boards Guide , Meteor Electrical

Quick Installation: Earth and neutral terminals are laid out for efficient dressing and testing.
Versatility: Suitable for both internal and external installations, our distribution boards offer flexibility for varied



PAANO MAG INSTALL NG LINE TO NEUTRAL, LINE TO GROUND

ANO ANG KAIBAHAN SA PLUG-IN TYPE PANEL BOARD SA MCB DISTRIBUTION BOX Paano Mag Terminate Ng MCB 2 POLE 8 Branches, MotoElect TV RCBO Installation Line to Neutral Connection Single

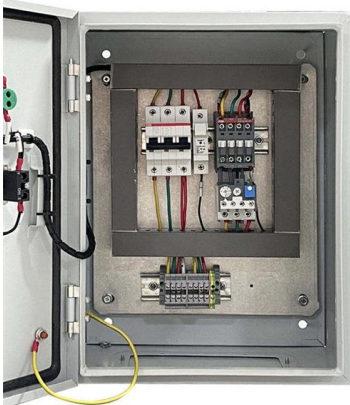


How to install the neutral wire in the distribution box?

The following introduces the specific installation methods from three aspects: preparations before installation, installation procedures, and inspections after

Cautions and Requirements for Installation of

8. After installation, the residue in the distribution box should be cleaned up. When the distribution box is installed and constructed, some safety operation items



IEEE 525-2007_accepted

1.2 Purpose The purpose of this guide is to provide guidance to the substation engineer in established practices for the application and installation of metallic and optical cables in electric power



Method Statement for Installation & Testing of Electrical

This method statement will help the electrical engineers and supervisors for the installation of distribution board for an electrical project. Additionally site team will

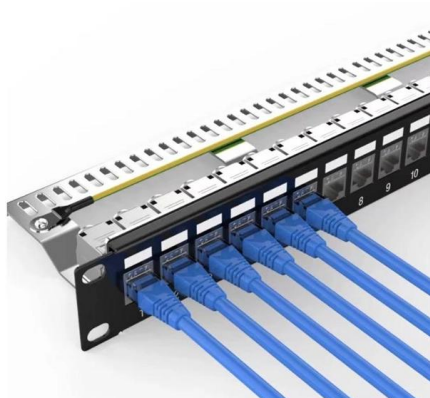
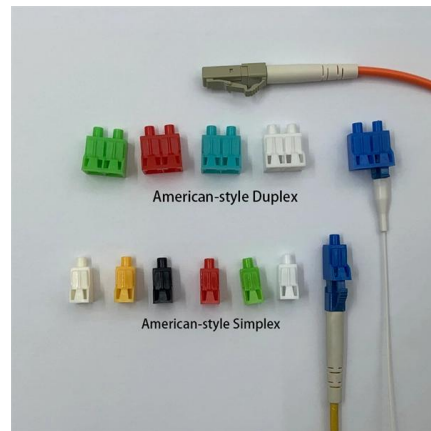


How To Connect A Distribution Box

Learn how to connect a distribution box with this easy-to-follow, step-by-step guide. From tools and materials needed to common installation mistakes and solutions, this comprehensive article will

Requirements And Specifications For Installation Of

In flammable and explosive environments, explosion-proof distribution boxes should be selected and explosion-proof treatment should be carried out.



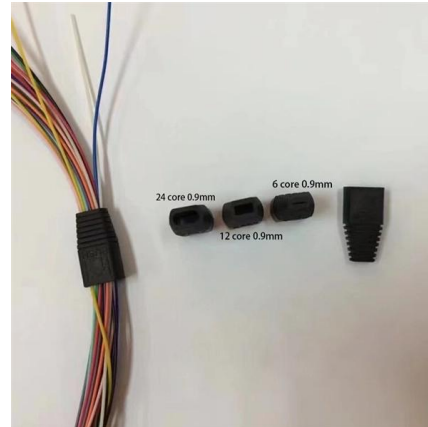
Wiring Made Easy: A Step-by-Step Guide on How to

In this blog, we will discuss the step-by-step process of how to install a neutral wire, including which tools you will need, safety precautions to take, and

How to Install a Neutral Wire (DIY)



Installing a neutral wire can be complicated, even more, if you're working with a light switch that you've had for years. This article teaches you how



Key Points Of Distribution Box Installation

3. Distribution box and switch box shall be installed in ventilated, dry and normal temperature places. It is strictly prohibited to install it in the gas, flue gas, steam, liquid and other harmful media with severe

Distribution System Neutral Grounding Methods and Transformer

This report is intended to be a primer that illustrates the fundamentals of neutral grounding and transformer winding configuration as they relate to distribution system protection.



Key Points Of Distribution Box Installation

The wire bundle shall not be directly touched with the inlets and outlets of the box. The power lines entering the switch box shall not be connected with pins. The power lines of the mobile distribution





Waterproof Distribution Box Wiring And Neutral Wire Installation

The connecting wires in water tight electrical box should be insulated and the joints should not be loose. There should be no exposed live parts in waterproof cable box. The neutral wire



Distribution Box Installation: A Complete Guide to Safe

In this comprehensive guide, we'll cover everything you need to know about distribution box installation, from the basics to the step-by-step installation

Contact Us

For datasheets, pricing, or custom high-speed optical interconnect solutions, please visit:
<https://www.syropy.com.pl>